

FasTrax® High Performance Doors

Easy is better. Easy to specify.
Easy to operate. Easy to maintain.
And easy to own. With Rite-Hite's FasTrax high performance industrial doors, the choice is easy.

Simple design and easy choice for almost any opening

A single operational platform can be used for interior, exterior, cooler, freezer and high wind applications.

Versatile track configurations

Available with a radial track, standard lift, high lift, full vertical and custom configurations, FasTrax fits almost any opening with fewer costly building modifications.

Reinventing the wheel

The drive gear, edge material and drive spheres eliminate the need for counterweights, springs or pulleys.

Communication

Rite-Hite Doors has a series of light communication products to help reduce common collision accidents between forklifts and pedestrians. LED Countdown, LED Pre-Announce and LED Virtual Vision available.

Maximum uptime, minimum maintenance

Fewer moving parts mean fewer, less costly repairs and reliable, trouble-free performance.

Industry's highest operating speeds

Operating speeds up to 100" per second (2.5 m/sec) allows fast cycle times that maximize productivity and energy savings.

TRUE Auto Re-feed™

After an accidental impact, the FasTrax door re-feeds itself on the fly without human intervention, keeping your door closed and downtime to a minimum.

Industry's safest door

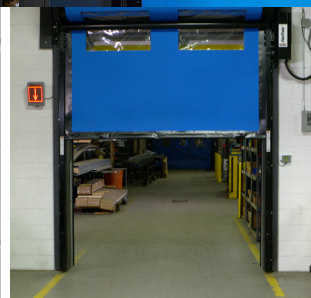
Thanks to soft break-away technology, Virtual Vision, available motion detection, two thru-beam photo eyes and optional large clear vision.



True Auto Refeed



Graphic User Interface (GUI)



LED Countdown

Specifications

Speed

Up to 100"/sec (2.5 m/sec) with standard variable frequency drive. Top speed is dependent on door size.

Size

Minimum – 3'0" w x 3'0" h (914 mm x 914 mm)
Maximum – 16'0" w x 16'0" h (4876 mm x 4876 mm)

Curtain material

Interior: DuraMax 60 mil Exterior: DuraMax 100 mil

Side frames

Powder-coated aluminum extrusion, 4 1/2" wide x 4 3/4" (114 mm x 120 mm) projection.

Drive system

2 HP (1.5 kW) motor, variable frequency drive, cushioned motor mounts, drive gear, drive spheres and a composite-edge material which is attached to the curtain.

Electrical requirements

Single-phase: 220V – 240V

Three-phase: 208V, 230V, 400V, 460V, 575V

Graphic User Interface (GUI)

Industry's only 7" (178 mm) LCD touch screen interface that provides increased safety by allowing an individual to simply access the control box settings without wearing the necessary PPE often required for accessing a live electrical panel.

Curtain retention

Wear-resistant Lexan wind guides keep tension on the curtain the entire length of the side frame. Standard pressure retention of 0.2 in. H₂O (50 Pa) with capability up to 2.7 in. H₂O (670 Pa). This is equivalent up to a 75 mph windload.

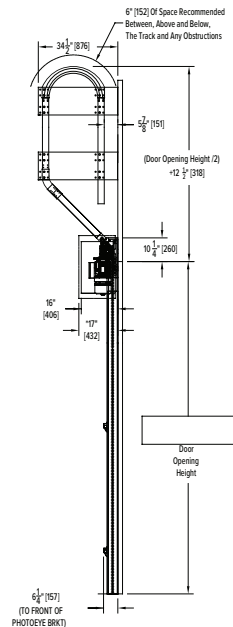
Safety features

Soft break-away technology, two thru-beam photo eyes mounted at 18" (457 mm) and 54" (1371 mm) off the floor.

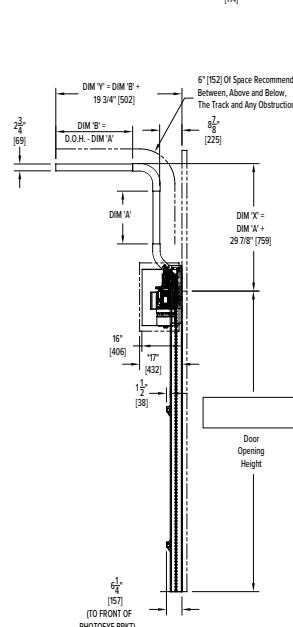
Warranty

Two (2) Year on all mechanical and electrical parts.
One (1) Year labor.
Five (5) Year for motor, brake and gearbox.

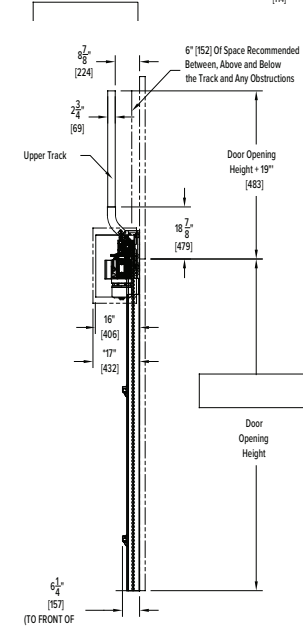
DOOR OPENING HEIGHT	DIM "A"	DIM "B"
8'0" [2439] ≤ DOH ≤ 10'0" [3048]	28.50" [724]	24.5" [622]
10'0" [3048] > DOH ≤ 16'0" [4876]	32.75" [835]	27.83" [701]



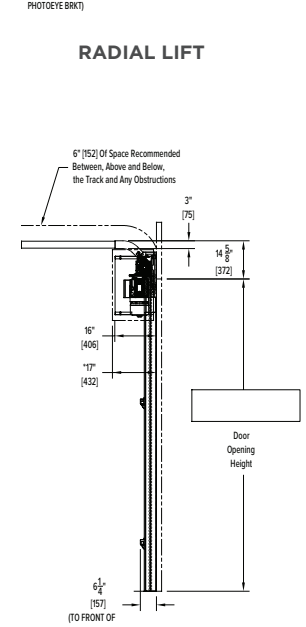
WRAPBACK LIFT



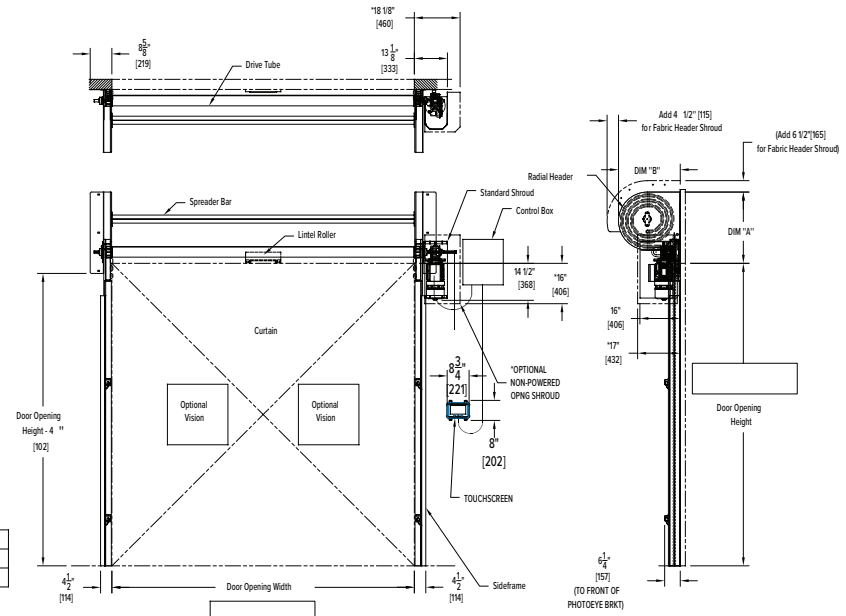
HIGH LIFT



VERTICAL LIFT



STANDARD LIFT



RADIAL LIFT



D20FTSS0218H1

8900 North Arbon Drive
Milwaukee, WI 53223, USA

P 414-355-2600 (800-456-0600)

F 414-355-9248

RITE-HITE®, FasTrax®, TRUE Auto Re-feed™, Soft-Edge™, i-COMM™ are trademarks of the RITE-HITE Holding Corporation. RITE-HITE products may be covered by one or more U.S. Patents with other U.S. and foreign patents pending. RITE-HITE reserves the right to make product improvements without prior notice.

www.ritehite.com