

PRODUCT CATALOGUE

APRIL 2015



**AUSTRALIAN
ENGINEERED
FOR A TOUGH
WORLD**



**AUSTRALIAN
ENGINEERED
FOR A TOUGH
WORLD**



**WORLDPOLY IS ONE OF
THE MOST SIGNIFICANT
MANUFACTURERS OF PE PIPE
WELDING EQUIPMENT IN THE
WORLD, SUPPLYING TO OVER
105 COUNTRIES**



WORLDPOLY. THREE GENERATIONS OF KNOWLEDGE AND EXPERIENCE



WORLDPOLY IS AN AUSTRALIAN OWNED AND BASED COMPANY THAT HAS SUCCESSFULLY LED THE POLYETHYLENE PIPE AND FITTINGS INDUSTRY FOR THREE GENERATIONS AND OVER 50 YEARS.

Leaders in the development and production of International Standard PE pipe welding fusion equipment, we now export to more than 105 countries.


From the mines in the deserts of South America and fish farms in Malaysia, to freeze-resistant welds in Antarctica and the technical requirements of Germany and Norway, we're proud to say we've done it all. We've got the expertise, experience and contacts to partner with you and tackle any project – big or small.

Not only do we manufacture and supply some of the best and most economical pipe welding machinery on the market, we also offer international training, advice and parts delivery – so you know

you've got on-ground support to ensure a premium outcome, every time.



INNOVATION THROUGH AUSTRALIAN ENGINEERING


**AUSTRALIAN
ENGINEERED
FOR A TOUGH
WORLD**

POLY FORCE
TECHNOLOGY



“Our focus is appropriate innovation, driven by our constant pursuit for welding advancement and excellence as required in an increasingly competitive marketplace.”

Rob Hall, Chairman & CEO.

WORLDPOLY IS PROUD TO FEATURE AUSTRALIAN ENGINEERING EXPERIENCE IN OUR PE PIPE WELDING RANGE. WE HAVE PROUDLY INTRODUCED POLYFORCE TECHNOLOGY – A SERIES OF HIGH & LOW PRESSURE, ALL TERRAIN, TRACKED AND TRENCH MACHINES.

With the PolyForce630 Series 2, PolyForce 450 and PolyForce 315, any operator will enjoy the significantly reduced welding times, ease of use and data logging capability; backed by minimum

2 year warranties and significant Worldpoly application support and training.

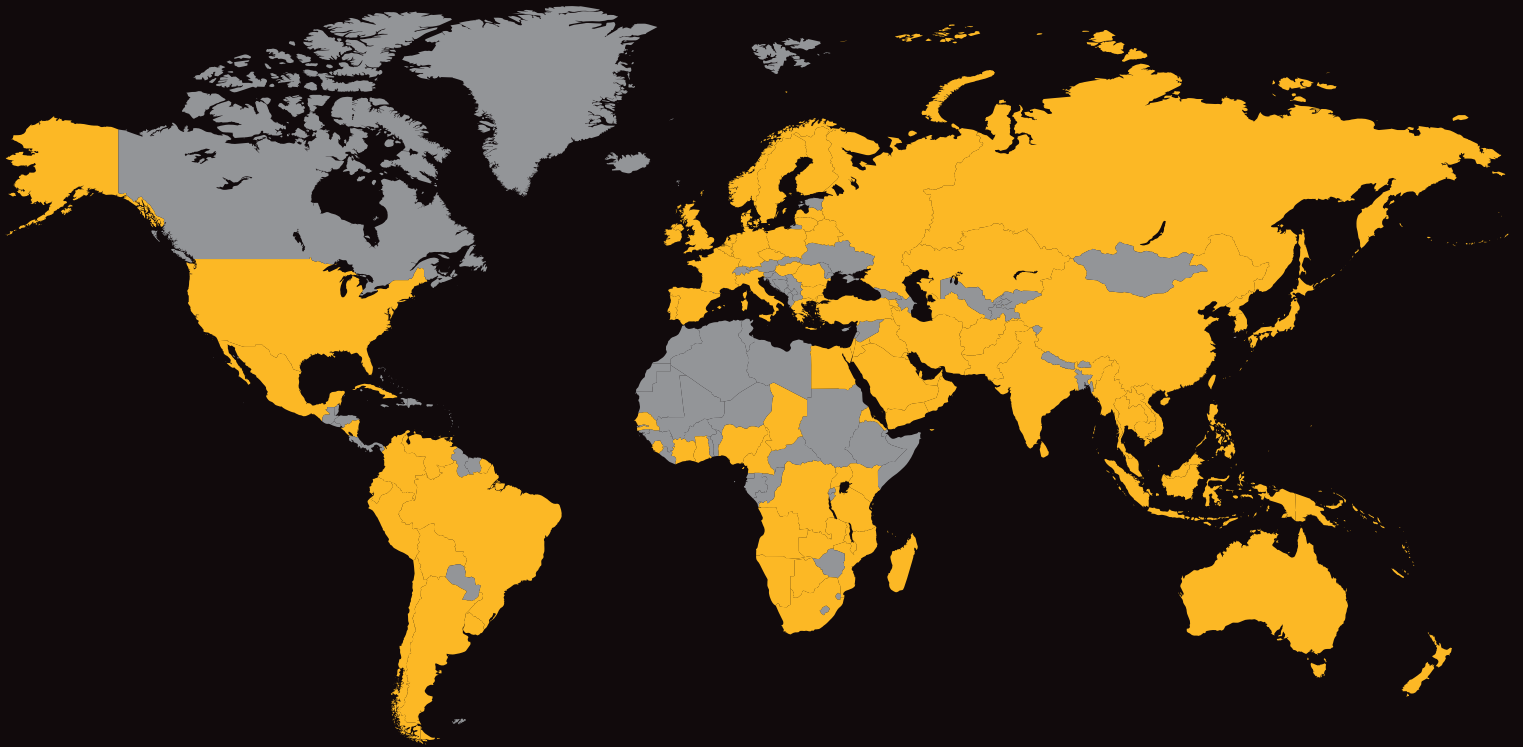
FEATURES of the Australian Made PolyForce 630 Series II:

- High & low pressure welding
- CNC or manual operation
- Tracked, AllTerrain & Trench options
- Automatic and data logging
- Bosch Rexroth hydraulics
- Hydraulic clamps with crash protection
- Hydraulic operation of heating plate and facing tool
- Easy trench welding

- Safety
- Economy – low fuel consumption
- Flexibility – welding between clamps 2 & 3 or 3 & 4
- Pipe lifting rollers.

All Australian engineered machines carry the Worldpoly look in the Aussie Gold colour scheme, and if applicable; the Australian Government approved “Made In Australia” logo. Be assured, our Australian Engineered series is much more than a cosmetic overhaul. Each machine boasts impressive operator-friendly features, has significant additional options available, and includes extended warranties.

WORLDPOLY – PRODUCTS AND SERVICES IN DEMAND AROUND THE WORLD



Indicates countries and regions
with Worldpoly customers



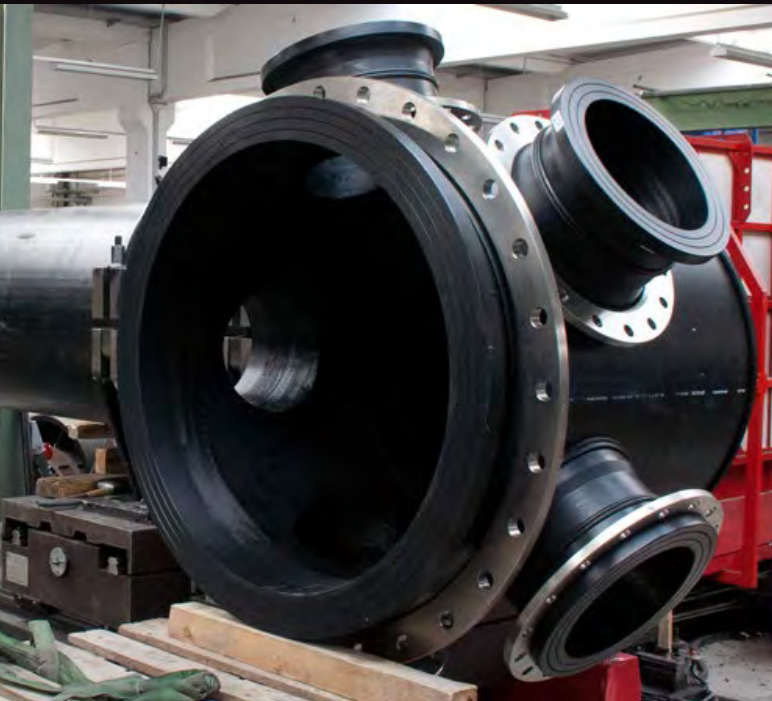
“For over 50 years, Australia-based Worldpoly has been involved in the polyethylene pipe industry as a pipe extruder, fabricator, consultant and now major manufacturer of pipe welding equipment.”

Nikita Hall
Worldpoly Sales Manager



AUSTRALIAN ENGINEERED FOR A TOUGH WORLD

INCREASING POTENTIAL THROUGH ONGOING SUPPORT



WHAT SETS WORLDPOLY ASIDE FROM OUR COMPETITORS

Our guarantee to provide customers with access to trained technicians in all aspects of field and factory service. Our Service Engineers hold up-to-date qualifications, accredited licensing and years of practical hands-on expertise.

Servicing Worldpoly machines is only half the story – we also provide spare parts for even our oldest and earliest machines. Worldpoly machines are built to

meet the ongoing productivity demands expected by our customers.

Whether it is routine maintenance, or special servicing programs for customers with particular needs, Worldpoly is there to keep you working.

INCREASING POTENTIAL THROUGH ONGOING SUPPORT.

At Worldpoly, we understand how critical ongoing support is to the success of every project, no matter what the size.

We invest in highly qualified and experienced Application Technicians to train and assist our customers in safely and productively operating Worldpoly equipment to get optimal performance – no matter if your machine is old, new, in the field or in the workshop.

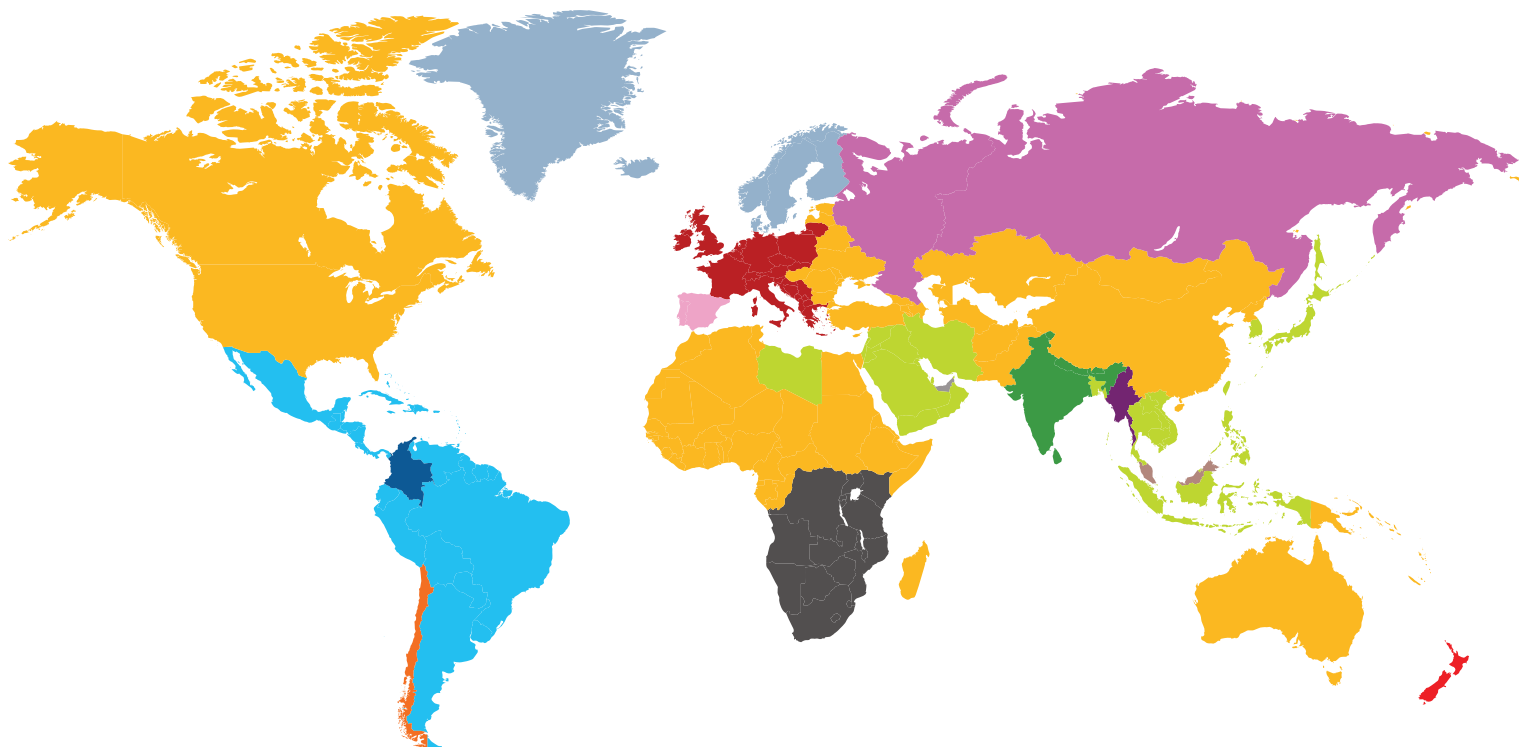
Beyond our standard guarantee of access to an Applications Technician, our Applications Group also provides support to customers who seek to further develop their activities.

THE EXPANSE OF WORLDPOLY



REGIONS SERVICED BY OUR DEALER NETWORK

For dealer contact details see back cover



Australia	India	Russia
Asia and Middle East	Latin America	Scandinavia
Chile	Malaysia	Spain and Portugal
Colombia	Myanmar	Sub-Saharan Africa
Germany	New Zealand	

WORLDPOLY SUPPLIES TO, SUPPORTS AND SERVICES OUR MACHINES IN ALL CONTINENTS AND TO THE FOUR CORNERS OF THE GLOBE. IN MANY REGIONS WE DO THIS WITH A TEAM OF DISTRIBUTORS WHO WE ARE ENORMOUSLY PROUD TO BE ASSOCIATED WITH.

Each of our distributors are well established and have earned an esteemed and respected reputation in their own right. Many of these distributors have been associated with the Hall family for more than 30 years.

We have mutually agreed Customer Satisfaction processes and benchmarks so that any Worldpoly machine delivered anywhere in the world will be serviced and supported at the same high standard.

Our distribution and freight criteria levels ensure swift response times for Service and Support enquiries and deliveries – particularly spare parts.

In regions not serviced by Worldpoly Distributors, we work directly with clients for the fastest and most cost effective solution.

Having employees speaking twelve languages, as well as 50 years of experience and servicing more than 105 countries, Worldpoly will be able to offer an appropriate solution for your needs.

TRAINING THE SECRET TO SUCCESS



Malaysia



Philippines



Ghana



New Caledonia

THE TECHNIQUE IS IN THE TRAINING

AT WORLDPOLY, WE BELIEVE THAT TRAINING THE USERS OF OUR MACHINERY IS JUST AS IMPORTANT AS SUPPLYING THE MACHINES THEMSELVES – IT ENSURES EASE OF USE, QUALITY WORKMANSHIP AND DURABILITY OF ANY PIPELINE OR FITTING.

OUR TRAINING COMMITMENT

Worldpoly is committed to provide you with the tools and know-how to build a reputation of excellence, consistency, reliability and profitability. We do this by assessing the level of training your team requires and then tailoring a program to ensure you're getting the best out of your machines.

Worldpoly operates resident training schools in a number of countries. Please check with your distributor or Worldpoly direct for the closest location.

“

It is a pleasure to train our customers to not only be proficient in the use of their latest equipment but to also help them expand their commercial possibilities in engineering and manufacture.

”

*Rameiss Paker
Worldpoly General Manager
Asia and Middle East*



QUALITY ASSURANCE AND ADVICE



WITH CLIENTS IN OVER 105 COUNTRIES, AND MORE THAN 50 YEARS OF ACTIVE HISTORY IN THE PE INDUSTRY, WORLDPOLY HAS A LONG TRACK RECORD OF SUCCESS DUE TO OUR COMMITMENT TO UNDERSTAND OUR CLIENT'S NEEDS AND PROVIDE OUTCOME-FOCUSED SOLUTIONS.



BE ASSURED

All Worldpoly Machines carrying the CE mark are specifically developed and manufactured with CE Approval in mind. This ensures that these Worldpoly machines exceed the requirements of all international markets that demand the highest standard of safety.

Worldpoly Machines carrying the CE mark and have Internationally recognised SGS approval. You can be assured that our machines are designed and manufactured to enable you to operate in a more sustainable manner - improving quality and productivity and reducing risk to health and safety.

MANUFACTURING ACCOLADE

Worldpoly holds accreditation to ISO 9001.



OUR EXPERIENCE IS YOUR SOLUTION

Getting the right advice can save you time and money.

At Worldpoly our specialist team has decades of experience in every application of PE pipe and the best methods to weld it for durability, consistency and reliability. They also have the skills and expertise to help you find the solution to your problem, no matter how impossible it may seem.

Our team members' combined experiences have given us a pool of knowledge, which you can draw from to ensure the success of your operation.

CONTENTS **WORLDPOLY** PRODUCT CATALOGUE **APRIL 2015**



PREMIUM WELDING MACHINES

POLYFORCE AND POLYROVER

PolyRover630/24 Trench	315-630mm OD, low force	13
PolyRover630/24 AllTerrain	315-630mm OD, low force	15
PolyRover630 Hydra	315-630mm OD, low force	17
PolyTrack	PolyForce630 & 1000 Machines	19
PolyForce630/24 S2 Auto Trench	315 to 630mm Dual Pressure	22
PolyForce630/24 S2 Auto AllTerrain	315 to 630mm Dual Pressure	24
PolyForce630/24 S2 Auto Track	315 to 630mm Dual Pressure	26
PolyForce1000/40 Auto Trench	500-1000mm OD, Dual Pressure	29
PolyForce1000/40 Auto AllTerrain	500-1000mm OD, Dual Pressure	30
PolyForce1000/40 Auto Tracked	500-1000mm OD, Dual Pressure	32

FIELD WELDING MACHINES

PolyBasic160M	40-160mm OD manual	35
Worldpoly160	50-160mm OD hydraulic	36
Worldpoly250	63-250mm OD hydraulic	37
Worldpoly250 CNC	90-250mm OD hydraulic	38
Worldpoly315	90-315mm OD hydraulic	39
Worldpoly315 High Pressure	90-315mm OD hydraulic	40
Worldpoly450	200-450mm OD hydraulic	41
Worldpoly450 High Presssure	200-450mm OD hydraulic	42
Worldpoly500	250-500mm OD hydraulic	44
Worldpoly630/24"	315-630mm OD hydraulic	46
Worldpoly800	450-800mm OD hydraulic	48
Worldpoly1000/40"	500-1000mm OD hydraulic	50
Worldpoly1200	630-1200mm OD hydraulic	52
Worldpoly1600	1000-1600mm OD hydraulic	54
Worldpoly2000/80"	1400-2000mm OD hydraulic	55
Worldpoly2200/88"	1400-2200mm OD hydraulic	56
Worldpoly3000	3000mm OD hydraulic	57
Trolleys		58

WORKSHOP MACHINES

FITTINGS PRODUCTION

PolyWorkshop315	90-315mm OD bends, tees, crosses, branches	60
PolyWorkshop450	250-450mm OD bends, tees, crosses, branches	61
PolyWorkshop630	315-630mm OD bends, tees, crosses, branches	62
PolyWorkshop800	500-800mm OD bends, tees, crosses, branches	63
PolyWorkshop800/355	355-800mm OD bends, tees, crosses, branches	64
PolyWorkshop1000	500-1000mm OD bends, tees, crosses, branches	65
PolyWorkshop1200	630-1200mm OD bends, tees, crosses, branches	66
PolyWorkshop1600	900-1600mm OD bends, tees, crosses, branches	67
PolyWorkshop1600/1000	1000-1600mm OD Y clamp ready	68
PolyWorkshop 2000/1200	1200-2000mm OD Y clamp ready	69

PIPE SAWS

PolySaw315	90-315mm OD cuts to 67 degrees	70
PolySaw630	110-630mm OD cuts to 67 degrees	71
PolySaw800	110-800mm OD cuts to 67 degrees	72
PolySaw1200	630-1200mm OD cuts to 67 degrees	73
PolySaw1600	630-1600mm OD cuts to 67 degrees	74
PolySaw1710/68"	630mm / 24"-1720mm / 68" OD cuts to 67 degrees	75
PolySaw2000/78"	1200mm - 2000mm OD	76

FITTINGS DIAGRAMS

Elbow	77
Equal Tee	77
Equal Cross	77
Equal Branch Tee and Wye	78

SADDLE FUSION MACHINES

PolySaddle630/315	315 to 630mm main pipe / 63 to 315mm outlet	79
PolySaddle1200/316 (48"/12")	315 to 1200mm main pipe / 63 to 500mm outlet	80
PolySaddleSaw500	Radius cuts 63 to 315mm outlet pipe	81

GENERAL MACHINES AND ACCESSORIES

ELECTROFUSION

ATS180	Welds electrofusion fittings 16 to 180mm OD	83
ATS250	Welds electrofusion fittings 16 to 400mm OD	84
ACT3	Welds electrofusion fittings 16 to 630mm OD	85
ATS High Power	Welds electrofusion fittings 16 to 1200mm OD	86
PE Stormwater Welder 4000	Welds electrofusion fittings 500 to 4000mm OD	88
Powerscape 175	Scraping width 175mm/350mm	90
UniPrep Scraper	Prepares 90 - 500mm OD	91
Multi Clamp Basic	Prepares 90 - 500mm OD	92

DATA LOGGERS

SPG 2.0 Data Logger	Logs 10,000+ welds	93
---------------------	--------------------	----

ACCESSORIES

Debeader450	Internal weld bead remover 90mm - 450mm	94
Debeader630	Internal weld bead remover 500mm - 630mm	95
PolySling500	Suitable from 100 to 500mm OD PE pipe	96
PolySling1000	Suitable from 315 to 1000mm OD PE pipe	97
PolyRoller450	Adjustable pipe roller stand 40-450mm	98
PolyRoller1000	Adjustable pipe roller stand 50-1000mm	99

PREMIUM WELDING MACHINES



Equipment for welding and fusion of pipes and fittings in the field. Includes pipeline welding equipment for low and high-force fusion, hydraulic and manual machines. The Worldpoly range of machines can suit any application or budget.

- **POLYFORCE AND POLYROVER**
- **FIELD WELDING MACHINES**

PolyForce630/24 CNC Trench

Worldpoly PolyForce630/24 CNC AllTerrain Fusion Machine. Australian Made.

Born from more than 50 years and three generations of experience with PE pipe and a 3 year dedicated research and development project with Bosch Rexroth, Worldpoly manufactures the PolyRover and PolyForce range in Australia to provide today's HDPE pipe fusion machine for welding according to both high and low pressure standards.

PolyForce630 CNC provides the highest quality and most consistent high and low pressure butt fusion possible. High pressure (SHP) SDR 11 HDPE butt welds consistently test between 101% and 107% of host pipe strength.

Under the correct site conditions, PolyForce630/24 CNC can reduce welding time by more than 50%.

Occupational Health and Safety friendly operation.

Two-handed controls with dead-man switches, keyed hydraulic safety lockout, 4 x Cat3 E-stops, restricted human entry to danger zones. Operator training provided with every machine, including registered licence.

Machine can be set to operate only when this licence number is entered.

3.5 second automatic changeover time for 630mm / 24" OD SDR 11, and impossible to crash pipe faces after heating - reduces or eliminates brittle failure through operator variables.

Automatic intuitive CNC or manual control. Highest possible level of HDPE pipe weld quality, and easier to use than a smartphone.

Automatic control of temperature, time and pressure through the use of Bosch Rexroth's almost indestructible mobile PLC – the same as is used in underground rock drills.

Fully automatic heating, changeover and cooling cycle following entry of welding standard, pipe diameter and wall thickness or SDR.

Automatic detection of pipe slippage.

Incorporated 5,000 weld data logging, optional remote Bluetooth, GPS & Satellite communication, and GPS.

Hydraulic open/close/locking clamps, heating plate and facing tool without operator contact.

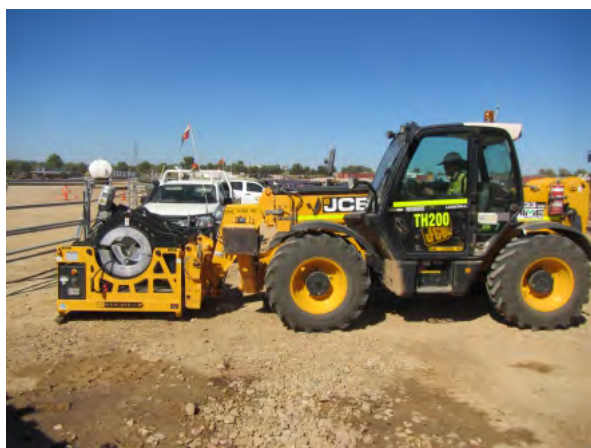
Clamps, heating plate and facing tool cannot crash.

Butt welding between clamps 2 & 3 or 3 & 4 for fittings, fabrications etc..

Australian designed and manufactured, the toughest and arguably most easily operated HDPE pipe welding machine on the market.

PolyForce630/24 CNC reduces welding time and workload on remote sites, allowing superb quality control, and faster, more efficient butt fusion of PE and PP pipelines.

Practical design with the ability to butt weld HDPE pipe



at both high and low pressure.

Manual or CNC operation, hydraulically lifted facing tool and heating plate, hydraulic controls and pump all on-board the main frame.

Hydraulic open/close/locking of pipe clamps - with crash protection and without operator contact during operation. Easy pipeline, trench or workshop butt fusion machine, supplied complete and ready to weld from 315 to 630mm / 8" or 12" to 24" diameter pipes and fittings between clamps 3 & 4 for tight work, plus high quality and sturdy construction provides an excellent platform for pipeline welding.

Worldpoly PolyForce630/24 CNC is specifically designed for use in rugged and remote terrain, available in tracked, wheeled or basic options, easily operated CNC or manual control with operator safety well considered, and includes 5000 weld data logger.

Standard pricing includes all diameter clamps and stub device.

PolyForce630 CNC. Today's HDPE fusion welder to take your business to the next level.

TECHNICAL SPECIFICATIONS

PolyForce630/24 Trench - Australian Made

Genuine 5 year international warranty

Hydraulic in/out facing tool and heating plate with crash protection. No longer are these considered consumables

Hydraulic open/close/locking of main clamps without operator contact

Simple operation. Automatic or manual. Integral 5000+ weld data logger

Bosch Rexroth hydraulics for highest quality and local serviceability

Pipe clamps prevent slippage even under extreme conditions. Machine detection of pipe slippage in case of significantly undersized pipe.

External hydraulic pipe lifters front and rear

Self-contained welding unit easily moved for site and trench work

Built tough, locally serviceable, low-noise. Just what you've been looking for

Capacity 315 to 630mm OD. Two-piece clamp inserts for pipe and fittings diameters 630, 560, 500, 450, 400, 355 and 315mm, and stub device, are included. Optional welding range 630 to 225mm OD or 24" to 8"

Hydraulics and controls - Bosch Rexroth, locally serviceable

Welded steel welding machine frame

Rated lifting points on welding machine and frame. Optional spreader bar

Maximum pump operating pressure - 200 bar / 20 MPa

Total cylinder section - 3660mm²

Weight - 1400 kg

Technical specifications subject to change without notice. Please check at time of order confirmation.



PolyForce630/24 CNC AllTerrain

Worldpoly PolyForce630/24 CNC AllTerrain Fusion Machine. Australian Made.

Born from more than 50 years and three generations of experience with PE pipe and a 3 year dedicated research and development project with Bosch Rexroth, Worldpoly manufactures the PolyRover and PolyForce range in Australia to provide today's HDPE pipe fusion machine for welding according to both high and low pressure standards.

PolyForce630 CNC provides the highest quality and most consistent high and low pressure butt fusion possible. High pressure (SHP) SDR 11 HDPE butt welds consistently test between 101% and 107% of host pipe strength.

Under the correct site conditions, PolyForce630/24 CNC can reduce welding time by more than 50%.

Occupational Health and Safety friendly operation.

Two-handed controls with dead-man switches, keyed hydraulic safety lockout, 4 x Cat3 E-stops, restricted human entry to danger zones. Operator training provided with every machine, including registered licence.

4 second automatic changeover time for 630mm / 24" OD SDR 11, and impossible to crash pipe faces after heating - reduces or eliminates brittle failure through operator variables.

Automatic intuitive CNC or manual control. Highest possible level of HDPE pipe weld quality, and easier to use than a smartphone.

Automatic control of temperature, time and pressure through the use of Bosch Rexroth's almost indestructible mobile PLC – the same as is used in underground rock drills.

Fully automatic heating, changeover and cooling cycle following entry of welding standard, pipe diameter and wall thickness or SDR.

Automatic detection of pipe slippage.

Incorporated 5,000 weld data logging, optional remote Bluetooth, GPS & Satellite communication, and GPS.

Hydraulic open/close/locking clamps, heating plate and facing tool without operator contact.

Clamps, heating plate and facing tool cannot crash.

Butt welding between clamps 2 & 3 or 3 & 4 for fittings, fabrications etc..

Wheeled trolley provides offset steering for pipeline welding, external hydraulic pipe lifters left and right, disk brakes, all with extremely rugged construction.

Bosch Rexroth hydraulics and controls for quality operation and easy local service.

Australian designed and manufactured, the toughest and arguably most easily operated HDPE pipe welding machine on the market.

PolyForce630/24 CNC reduces welding time and workload on remote sites, allowing superb quality

control, and faster, more efficient butt fusion of PE and PP pipelines.

Practical design with the ability to butt weld HDPE pipe at both high and low pressure.

Manual or CNC operation, hydraulically lifted facing tool and heating plate, hydraulic controls and pump all on-board the main frame.

Easy pipeline, trench or workshop butt fusion machine, supplied complete and ready to weld from 315 to 630mm / 8" or 12" to 24" diameter pipes and fittings between clamps 3 & 4 for tight work, plus high quality and sturdy construction provides an excellent platform for pipeline welding.

Worldpoly PolyForce630/24 CNC is specifically designed for use in rugged and remote terrain, available in tracked, wheeled or basic options, easily operated CNC or manual control with operator safety well considered, and includes 5000 weld data logger.

Standard pricing includes all diameter clamps and stub device.

PolyForce630 CNC. Today's HDPE fusion welder to take your business to the next level.

TECHNICAL SPECIFICATIONS

PolyForce630 AllTerrain - Australian Made

Genuine 5 year international warranty

All-terrain heavy duty wheeled base

Hydraulic in/out facing tool and heating plate with crash protection. No longer are these considered consumables

Hydraulic open/close/locking of main clamps without operator contact

Simple operation. Automatic or manual. 5000+ weld data logging as standard

Bosch Rexroth hydraulics for highest quality and local serviceability

Pipe clamps prevent slippage even under extreme conditions. PLC automatically measures drag, and detects slippage

External hydraulic pipe lifters front and rear

Self-contained welding unit easily removed for site and trench work

Built tough, locally serviceable. Just what you've been looking for

Capacity 315 to 630mm OD. Two-piece clamp inserts for pipe and fittings diameters 630, 560, 500, 450, 400, 355 and 315mm, and stub device, are included. Can be supplied to weld down to 225mm

Hydraulics - Bosch Rexroth, locally serviceable

Welded steel machine frame and heavy duty wheeled base

Disk brakes.

Rated lifting points on welding machine and frame, spreader bar included

Maximum pump operating pressure - 200 bar / 20 MPa

Total cylinder section - 3660mm²

Weight - 1800 kg

Technical specifications subject to change without notice. Please check at time of order confirmation.



PolyRover630 Hydra

Worldpoly PolyRover630 Hydra. Australian designed and manufactured for a tough world. Hydraulic open/close/locking clamps with crash protection. Hydraulically operated facing tool and heating plate. Hydraulic pipe lifters front and back. Bosch Rexroth hydraulics for quality and local service. Intuitive easily operated controls. OH&S friendly. Easily removed from trolley for trench operation. Reducing workload and the need for extra support equipment on remote sites allows for faster, more efficient welding of PE and PP pipelines. Practical design with hydraulically lifted facing tool and heating plate, hydraulic controls and pump all on-board the main frame, hydraulic open/close/locking of pipe clamps - with crash protection, easy trench welding, the ability to weld between clamps 3 & 4 for tight work, plus high quality and sturdy construction, provides an excellent machine for pipeline welding. Born from more than 50 years and three generations of experience with PE pipe, and having clients in more than 90 countries, Worldpoly manufactures the PolyRover range in Australia to provide a single platform for welding. Worldpoly PolyRover machines are specifically designed for use in rugged and remote terrain, are easily operated and are pre-wired for the attachment of Worldpoly or other data loggers.

TECHNICAL SPECIFICATIONS

Australian made

Genuine 36 month international warranty

Main frame includes 4 clamp sets for 630mm diameter:

- Welding range 315mm to 630mm, SDR 9 (PN16) to SDR 41 (PN4), according to DVS, ISO and AUS/NZ POP003 low force
- Easily able to weld between clamps 3 and 4 for tight fittings and fabrications
- Entire welding frame with 4 clamps easily removed for trench work, allowing accurate alignment

- Fork lift and overhead lifting points

Includes reducing liners to weld pipe within the complete specified range:

- Metric – 630, 560, 500, 450, 400, 355 and 315mm OD

Hydraulic open/close/lock pipe clamps, with crash protection

Hydraulically lifted cast Aluminium PTFE coated heating plate with electronic temperature control and insulated cover

Hydraulically lifted and electrically operated cast Aluminium electric facing tool, thermostatically controlled with current overload protection

High quality and remotely serviceable Bosch Rexroth electro-hydraulic pump, valves and controls

Wired ready to accept Worldpoly and other data loggers

Operating voltage:

- Standard 400 volt 3 phase 50 Hz 14.6kW, 23A. Requires generator minimum 18 KVA.

Modular controls located in convenient operator position include:

- All welding operation controls

- Digital pressure readout

- Countdown timer

- 3 x Emergency stops

Steerable wheeled base readily removable for trench work

- High quality wide profile all-terrain wheels and tyres

- Hydraulic pipe lifters front and rear

- Offset steering

- Not road registrable

Tool box including spare blades, thermocouple, temperature controller, tools etc

Options include:

- Stub end device for welding end fittings (available in Aluminium or Steel)

Clamp options include:

- Supplied with the machine - Layer clamps metric: 630 x 560, 560 x 500, 500 x 450, 450 x 400, 400 x 355 and 355 x 315mm

- Optional layer clamps inch: 24" x 22", 22" x 20", 20" x 18", 18" x 16", 16" x 14" and 14" x 12"

- Two-piece clamps 630 x 560, 630 x 500, 630 x 450, 450 x 400, 450 x 355, 450 x 315mm

- Narrow clamps metric: 630 x 560, 630 x 500, 630 x 450, 630 x 400, 630 x 355, 630 x 315mm, as required for welding injection moulded or short-spigot fittings

Please note technical specifications of Worldpoly machines may change without notice. Please confirm at time of order.



PolyForce630/24 CNC Track

Worldpoly PolyForce630/24 CNC Tracked Fusion Machine. Australian Made.

Born from more than 50 years and three generations of experience with PE pipe and a 3 year dedicated research and development project with Bosch Rexroth, Worldpoly manufactures the PolyRover and PolyForce range in Australia to provide today's HDPE pipe fusion machine for welding according to both high and low pressure standards.

PolyForce630 CNC provides the highest quality and most consistent high and low pressure butt fusion possible. High pressure (SHP) SDR 11 HDPE butt welds consistently test between 101% and 107% of host pipe strength.

Under the correct site conditions, PolyForce630/24 CNC can reduce welding time by more than 50%.

Occupational Health and Safety friendly operation. Two-handed controls with dead-man switches, single operator position, keyed hydraulic safety lockout, 4 x Cat3 E-stops, restricted human entry to potential danger zones. Operator training provided with every machine, including registered licence.

Automatic 4 second automatic changeover time for 630mm / 24" OD SDR 11, and impossible to crash pipe faces after heating - reduces or eliminates brittle failure through operator variables.

Automatic intuitive CNC or manual control. Highest possible level of HDPE pipe weld quality, and easier to use than a smartphone.

Automatic control of temperature, time and pressure through the use of Bosch Rexroth's almost indestructible mobile PLC – the same as is used in underground rock drills.

Fully automatic heating, changeover and cooling cycle following entry of welding standard, pipe diameter and wall thickness or SDR.

Automatic detection of pipe slippage.

Incorporated 5,000 weld data logging, optional remote Bluetooth, GPS & Satellite communication.

Hydraulic open/close/locking clamps, heating plate and facing tool without operator contact.

Clamps, heating plate and facing tool cannot crash.

Tracked base includes Perkins 1500 RPM low-noise diesel generator with less than 65 dB at operator position, three speed rubber tracks with wired and optional cordless remote control, external hydraulic pipe lifters left and right. Base also operates as site utility device with LED head light, LED warning light, remote start and fuel gauge on operator side.

Bosch Rexroth hydraulics and controls for quality operation and easy local service.

Butt welding between clamps 2 & 3 or 3 & 4 for fittings, fabrications etc..

Australian designed and manufactured, the toughest and arguably most easily operated HDPE pipe welding machine on the market.

PolyForce630/24 CNC reduces welding time and workload on remote sites, allowing superb quality control, and faster, more efficient butt fusion of PE and PP pipelines.

Practical design with the ability to butt weld HDPE pipe at both high and low pressure.

Manual or CNC operation, hydraulically lifted facing tool and heating plate, hydraulic controls and pump all on-board the main frame.

Easy pipeline, trench or workshop butt fusion machine, supplied complete and ready to weld from 315 to 630mm / 8" or 12" to 24" diameter pipes and fittings between clamps 3 & 4 for tight work, plus high quality and sturdy construction provides an excellent platform for pipeline welding.

Worldpoly PolyForce630/24 CNC is specifically designed for use in rugged and remote terrain, available in tracked, wheeled or basic options, easily operated CNC or manual control with operator safety well considered, and includes 5000 weld data logger.

Standard pricing includes all diameter clamps and stub device.

PolyForce630 CNC. Today's HDPE fusion welder to take your business to the next level.

TECHNICAL SPECIFICATIONS

PolyForce630/24 Tracked HDPE Fusion Machine - Australian Made

Track mounted. Self contained and self propelled

Genuine 5 year International warranty

Hydraulic in/out facing tool and heating plate with crash protection. No longer are these considered consumables

Hydraulic open/close/locking of main clamps without operator contact. Impossible to crash main clamps with facing tool and heating plate.

Perkins on-board, low-noise, low fuel consumption 1500 RPM generator. 65 dB at operator position

Simple operation. Automatic or manual butt fusion. 5000+ weld data logging included. 3.5 second changeover time for 630mm (24") SDR 11 in Automatic mode

Bosch Rexroth hydraulics - locally serviceable. Remote communication options using GSM, Satellite and Bluetooth. GPS compatible

Pipe clamps prevent slippage even under extreme conditions, which is detected by the machine in case of undersized pipe

External hydraulic pipe lifters front and rear

Italian track assembly, rubber tracks, three-speed, 30+ degree capacity, automatic braking when stopped

Butt welding unit easily removed for site and trench work

Long operating time thanks to 1500 RPM low-noise diesel - 18 to 25 hours under normal welding conditions

Built tough, locally serviceable, low-noise. Just what you've been looking for

Clamp options:

Capacity 315 to 630mm OD. Two-piece clamp inserts for pipe and fittings diameters 630, 560, 500, 450, 400, 355 and 315mm, and stub device, are included. can be supplied to weld down to 225mm OD.

Alternatively, capacity 8" to 24" IPS. Two-piece clamp inserts for pipe and fittings diameters 24", 22", 20", 18", 16", 14", 12", 10" & 8", and stub device, are included

Electric start with remote start and fuel gauge on operator side

Welded steel machine frame and tracked base

Tracked base completely self-contained for use as utility vehicle on-site

Wired remote control. Optional wireless remote with drop and tilt protection

Rated lifting points on welding machine and frame, optional spreader bar

Maximum pump operating pressure - 200 bar / 20 MPa

Total cylinder section - 3660mm²

Fuel capacity - 70 litres

Engine - Perkins 2216 cc, 4 cylinder turbo, 1500 RPM low-noise diesel

Weight - 3200 kg

Technical specifications subject to change without notice. Please check at time of order confirmation.

PolyForce630/24 S2 Auto Trench

Worldpoly PolyForce630/24 S2 Auto AllTerrain Butt Fusion Machine. Australian Made.

Born from more than 50 years and three generations of experience with PE pipe and a 3 year dedicated research and development project with Bosch Rexroth, Worldpoly manufactures the PolyRover and PolyForce range in Australia to provide today's HDPE pipe fusion machine for welding according to both high and low pressure standards.

PolyForce630 provides the highest quality and most consistent high and low pressure butt fusion possible. High pressure (SHP) SDR 11 HDPE butt welds consistently test between 101% and 107% of host pipe strength.

Under the correct site conditions, PolyForce630/24 S2 Automatic can reduce welding time by more than 50%. Occupational Health and Safety friendly operation. Two-handed controls with dead-man switches, keyed hydraulic safety lockout, 4 x Cat3 E-stops, restricted human entry to danger zones. Operator training provided with every machine, including registered licence. Machine can be set to operate only when this licence number is entered.

3.5 second automatic changeover time for 630mm / 24" OD SDR 11, and impossible to crash pipe faces after heating - reduces or eliminates brittle failure through operator variables.

Automatic intuitive CNC or manual control. Highest possible level of HDPE pipe weld quality, and easier to use than a smartphone.

Automatic control of temperature, time and pressure through the use of Bosch Rexroth's almost indestructible mobile PLC – the same as is used in underground rock drills.

Fully automatic heating, changeover and cooling cycle following entry of welding standard, pipe diameter and wall thickness or SDR.

Automatic detection of pipe slippage.

Incorporated 5,000 weld data logging, optional remote Bluetooth, GPS & Satellite communication, and GPS. Hydraulic open/close/locking clamps, heating plate and facing tool without operator contact.

Clamps, heating plate and facing tool cannot crash. Butt welding between clamps 2 & 3 or 3 & 4 for fittings, fabrications etc..

Australian designed and manufactured, the toughest and arguably most easily operated HDPE pipe welding machine on the market.

PolyForce630/24 S2 Automatic reduces welding time and workload on remote sites, allowing superb quality control, and faster, more efficient butt fusion of PE and PP pipelines.

Practical design with the ability to butt weld HDPE pipe



at both high and low pressure.

Manual or CNC operation, hydraulically lifted facing tool and heating plate, hydraulic controls and pump all on-board the main frame.

Hydraulic open/close/locking of pipe clamps - with crash protection and without operator contact during operation. Easy pipeline, trench or workshop butt fusion machine, supplied complete and ready to weld from 315 to 630mm / 8" or 12" to 24" diameter pipes and fittings between clamps 3 & 4 for tight work, plus high quality and sturdy construction provides an excellent platform for pipeline welding.

Worldpoly PolyForce630/24 S2 Auto is specifically designed for use in rugged and remote terrain, available in tracked, wheeled or basic options, easily operated CNC or manual control with operator safety well considered, and includes 5000 weld data logger.

Standard pricing includes all diameter clamps and stub device.

PolyForce630 S2 Auto. Today's HDPE fusion welder to take your business to the next level.

TECHNICAL SPECIFICATIONS

PolyForce630 Automatic Trench - Australian Made

Genuine 36 month international warranty

Hydraulic in/out facing tool and heating plate with crash protection. No longer are these considered consumables

Hydraulic open/close/locking of main clamps without operator contact

Simple operation. Automatic or manual. 5000+ weld data logging when chosen

Bosch Rexroth hydraulics for highest quality and local serviceability

Pipe clamps prevent slippage even under extreme conditions. machine detection of pipe slippage in case of significantly undersized pipe.

External hydraulic pipe lifters front and rear

Self-contained welding unit easily moved for site and trench work

Built tough, locally serviceable, low-noise. Just what you've been looking for

Capacity 315 to 630mm OD. Two-piece clamp inserts for pipe and fittings diameters 630, 560, 500, 450, 400, 355 and 315mm, and stub device, are included

Hydraulics and controls - Bosch Rexroth, locally serviceable

Welded steel welding machine frame

Rated lifting points on welding machine and frame. Optional spreader bar

Maximum pump operating pressure - 200 bar / 20 MPa

Total cylinder section - 3660mm²

Weight - 1400 kg

Technical specifications subject to change without notice. Please check at time of order confirmation.



PolyForce630/24 S2 Auto AllTerrain

Worldpoly PolyForce630/24 S2 Auto AllTerrain Butt Fusion Machine. Australian Made.

Born from more than 50 years and three generations of experience with PE pipe and a 3 year dedicated research and development project with Bosch Rexroth, Worldpoly manufactures the PolyRover and PolyForce range in Australia to provide today's HDPE pipe fusion machine for welding according to both high and low pressure standards.

PolyForce630 provides the highest quality and most consistent high and low pressure butt fusion possible. High pressure (SHP) SDR 11 HDPE butt welds consistently test between 101% and 107% of host pipe strength.

Under the correct site conditions, PolyForce630/24 S2 Automatic can reduce welding time by more than 50%. Occupational Health and Safety friendly operation. Two-handed controls with dead-man switches, keyed hydraulic safety lockout, 4 x Cat3 E-stops, restricted human entry to danger zones. Operator training provided with every machine, including registered licence.

Machine can be set to operate only when this licence number is entered.

3.5 second automatic changeover time for 630mm / 24" OD SDR 11, and impossible to crash pipe faces after heating - reduces or eliminates brittle failure through operator variables.

Automatic intuitive CNC or manual control. Highest possible level of HDPE pipe weld quality, and easier to use than a smartphone.

Automatic control of temperature, time and pressure through the use of Bosch Rexroth's almost indestructible mobile PLC – the same as is used in underground rock drills.

Fully automatic heating, changeover and cooling cycle following entry of welding standard, pipe diameter and wall thickness or SDR.

Automatic detection of pipe slippage.

Incorporated 5,000 weld data logging, optional remote Bluetooth, GPS & Satellite communication, and GPS. Hydraulic open/close/locking clamps, heating plate and facing tool without operator contact.

Clamps, heating plate and facing tool cannot crash. Butt welding between clamps 2 & 3 or 3 & 4 for fittings, fabrications etc..

Wheeled trolley provides offset steering for pipeline welding, external hydraulic pipe lifters left and right, disk brakes, all with extremely rugged construction.

Bosch Rexroth hydraulics and controls for quality operation and easy local service.

Australian designed and manufactured, the toughest and arguably most easily operated HDPE pipe welding machine on the market.

PolyForce630/24 S2 Automatic reduces welding time and workload on remote sites, allowing superb quality control, and faster, more efficient butt fusion of PE and PP pipelines.

Practical design with the ability to butt weld HDPE pipe at both high and low pressure.

Manual or CNC operation, hydraulically lifted facing tool and heating plate, hydraulic controls and pump all on-board the main frame.

Hydraulic open/close/locking of pipe clamps - with crash protection and without operator contact during operation. Easy pipeline, trench or workshop butt fusion machine, supplied complete and ready to weld from 315 to 630mm / 8" or 12" to 24" diameter pipes and fittings between clamps 3 & 4 for tight work, plus high quality and sturdy construction provides an excellent platform for pipeline welding.

Worldpoly PolyForce630/24 S2 Auto is specifically designed for use in rugged and remote terrain, available in tracked, wheeled or basic options, easily operated CNC or manual control with operator safety well considered, and includes 5000 weld data logger.

Standard pricing includes all diameter clamps and stub device.

PolyForce630 S2 Auto. Today's HDPE fusion welder to take your business to the next level.

TECHNICAL SPECIFICATIONS

PolyForce630 Automatic AllTerrain

Genuine 36 month international warranty

All-terrain heavy duty wheeled base.

Hydraulic in/out facing tool and heating plate with crash protection. No longer are these considered consumables

Hydraulic open/close/locking of main clamps without operator contact

Simple operation. Automatic or manual. 2000+ weld data logging when chosen

Bosch Rexroth hydraulics for highest quality and local serviceability

Pipe clamps prevent slippage even under extreme conditions

Hydraulic pipe lifters front and rear

Self-contained welding unit easily removed for site and trench work

Built tough, locally serviceable. Just what you've been looking for

Capacity 315 to 630mm OD. Two-piece clamp inserts for pipe and fittings diameters 630, 560, 500, 450, 400, 355 and 315mm, and stub device, are included

Hydraulics - Bosch Rexroth, locally serviceable

Welded steel welding machine frame and heavy duty wheeled base

Disk brakes.

Rated lifting points on welding machine and frame, spreader bar included

Maximum pump operating pressure - 200 bar / 20 MPa

Total cylinder section - 3660mm²

Weight - 1800 kg

Specifications are subject to change without notice. Please confirm at time of purchase.



PolyForce630/24 S2 Auto Track

Worldpoly PolyForce630/24 S2 Auto Tracked Butt Fusion Machine. Australian Made.

Born from more than 50 years and three generations of experience with PE pipe and a 3 year dedicated research and development project with Bosch Rexroth, Worldpoly manufactures the PolyRover and PolyForce range in Australia to provide today's HDPE pipe fusion machine for welding according to both high and low pressure standards.

PolyForce630 provides the highest quality and most consistent high and low pressure butt fusion possible. High pressure (SHP) SDR 11 HDPE butt welds consistently test between 101% and 107% of host pipe strength.

Under the correct site conditions, PolyForce630/24 S2 Automatic can reduce welding time by more than 50%. Occupational Health and Safety friendly operation. Two-handed controls with dead-man switches, keyed hydraulic safety lockout, 4 x Cat3 E-stops, restricted human entry to danger zones. Operator training provided with every machine, including registered licence. Machine can be set to operate only when this licence number is entered.

3.5 second automatic changeover time for 630mm / 24" OD SDR 11, and impossible to crash pipe faces after heating - reduces or eliminates brittle failure through operator variables.

Automatic intuitive CNC or manual control. Highest possible level of HDPE pipe weld quality, and easier to use than a smartphone.

Automatic control of temperature, time and pressure through the use of Bosch Rexroth's almost indestructible mobile PLC – the same as is used in underground rock drills.

Fully automatic heating, changeover and cooling cycle following entry of welding standard, pipe diameter and wall thickness or SDR.

Automatic detection of pipe slippage.

Incorporated 5,000 weld data logging, optional remote Bluetooth, GPS & Satellite communication, and GPS. Hydraulic open/close/locking clamps, heating plate and facing tool without operator contact.

Clamps, heating plate and facing tool cannot crash. Tracked base includes Perkins 1500 RPM low-noise diesel generator with less than 65 dB at operator position, three speed rubber tracks with wired and optional cordless remote control, external hydraulic pipe lifters left and right. Base also operates as site utility device with LED head light, LED warning light, remote start and fuel gauge on operator side.

Bosch Rexroth hydraulics and controls for quality operation and easy local service.

Butt welding between clamps 2 & 3 or 3 & 4 for fittings,

fabrications etc..

Australian designed and manufactured, the toughest and arguably most easily operated HDPE pipe welding machine on the market.

PolyForce630/24 S2 Automatic reduces welding time and workload on remote sites, allowing superb quality control, and faster, more efficient butt fusion of PE and PP pipelines.

Practical design with the ability to butt weld HDPE pipe at both high and low pressure.

Manual or CNC operation, hydraulically lifted facing tool and heating plate, hydraulic controls and pump all on-board the main frame.

Hydraulic open/close/locking of pipe clamps - with crash protection and without operator contact during operation. Easy pipeline, trench or workshop butt fusion machine, supplied complete and ready to weld from 315 to 630mm / 8" or 12" to 24" diameter pipes and fittings between clamps 3 & 4 for tight work, plus high quality and sturdy construction provides an excellent platform for pipeline welding.

Worldpoly PolyForce630/24 S2 Auto is specifically designed for use in rugged and remote terrain, available in tracked, wheeled or basic options, easily operated CNC or manual control with operator safety well considered, and includes 5000 weld data logger.

Standard pricing includes all diameter clamps and stub device.

PolyForce630 S2 Auto. Today's HDPE fusion welder to take your business to the next level.

TECHNICAL SPECIFICATIONS

PolyForce630/24 S2 Automatic Tracked HDPE Butt Welding Machine - Australian Made

Track mounted. Self contained and self propelled

Genuine 36 month International warranty

Hydraulic in/out facing tool and heating plate with crash protection. No longer are these considered consumables

Hydraulic open/close/locking of main clamps without operator contact. Impossible to crash main clamps with facing tool and heating plate.

Perkins on-board, low-noise, low fuel consumption 1500 RPM generator. 65 dB at operator position

Simple operation. Automatic or manual butt fusion. 5000+ weld data logging included. 3.5 second changeover time for 630mm (24") SDR 11 in Automatic mode

Bosch Rexroth hydraulics - locally serviceable. Remote communication options using GSM, Satellite and Bluetooth. GPS compatible

Three-speed Italian tracks, Bridgestone rubber.

Pipe clamps prevent slippage even under extreme conditions, which is detected by the machine in case of undersized pipe

External hydraulic pipe lifters front and rear

Italian track assembly, rubber tracks, three-speed, 30+ degree capacity, automatic braking when stopped

Butt welding unit easily removed for site and trench work

Long operating time thanks to 1500 RPM low-noise diesel - 18 to 25 hours under normal welding conditions

Built tough, locally serviceable, low-noise. Just what you've been looking for

Clamp options:

Capacity 315 to 630mm OD. Two-piece clamp inserts for pipe and fittings diameters 630, 560, 500, 450, 400, 355 and 315mm, and stub device, are included

Alternatively, capacity 8" to 24" IPS. Two-piece clamp inserts for pipe and fittings diameters 24", 22", 20", 18", 16", 14", 12", 10" & 8", and stub device, are included

Electric start with remote start and fuel gauge on operator side

Welded steel welding machine frame and tracked base

Tracked base completely self-contained for use as utility vehicle on-site

Wired remote control. Optional wireless remote with drop and tilt protection

Rated lifting points on welding machine and frame, optional spreader bar

Maximum pump operating pressure - 200 bar / 20 MPa

Total cylinder section - 3660mm²

Fuel capacity - 70 litres

Engine - Perkins 2216 cc, 4 cylinder turbo, 1500 RPM low-noise diesel

Weight - 3200 kg

Technical specifications subject to change without notice. Please check at time of order confirmation.


 COMING
SOON

PolyForce1000/40 Auto Trench

Worldpoly PolyForce1000/40 Auto Trench.

High and low pressure welding.

Hydraulic open/close/locking clamps with crash protection.

Tracked, AllTerrain or Trench.

Intuitive CNC or manual control. 2000 weld data logging when selected.

Hydraulic open/close heating plate and facing tool.

Bosch Rexroth hydraulics for easy local service.

Weld between clamps 2 & 3 or 3 & 4.

Australian engineered, the toughest and arguably most easily operated machine on the market.

PolyForce1000/40 reduces welding time and workload on remote sites, allowing faster, more efficient welding of PE and PP pipelines. Under the correct site conditions, high pressure welding of PE pipe can reduce welding time by up to 50%.

Practical design with the ability to weld at both high and low pressure, manual or CNC operation, hydraulically lifted facing tool and heating plate, hydraulic controls and pump all on-board the main frame. Hydraulic open/close/locking of pipe clamps - with crash protection and without operator contact during operation. Easy trench welding, supplied complete and ready to weld from 500 to 1000mm or 20" to 40" diameter pipes and fittings between clamps 2 & 3, or 3 & 4 for tight work, plus high quality and sturdy construction provides an excellent machine for pipeline welding. Born from more than 50 years and three generations of experience with PE pipe, and having clients in more than 100 countries, Worldpoly manufactures the PolyRover and PolyForce range to provide a single platform for welding, according to high and low pressure standards. Worldpoly PolyForce1000/40 Auto Trench is specifically designed for use in rugged and remote terrain, available in tracked, wheeled or trench options, easily operated CNC or manual control with operator safety well considered, and is pre-wired for the attachment of Worldpoly or other data loggers. Standard pricing includes all diameter clamps and stub device.

TECHNICAL SPECIFICATIONS

As PolyForce1000 Automatic AllTerrain, without trolley



PolyForce1000/40 Auto AllTerrain

Worldpoly PolyForce1000/40 Auto AllTerrain.

High and low pressure welding.

Hydraulic open/close/locking clamps with crash protection.

Tracked, AllTerrain or Trench.

Intuitive CNC or manual control. 2000 weld data logging when selected.

Hydraulic open/close heating plate and facing tool.

Bosch Rexroth hydraulics for easy local service.

Weld between clamps 2 & 3 or 3 & 4.

Australian engineered, the toughest and arguably most easily operated machine on the market.

PolyForce1000/40 Auto AllTerrain reduces welding time and workload on remote sites, allowing faster, more efficient welding of PE and PP pipelines. Under the correct site conditions, high pressure welding of PE pipe can reduce welding time by up to 50%.

Practical design with the ability to weld at both high and low pressure, manual or CNC operation, hydraulically lifted facing tool and heating plate, hydraulic controls and pump all on-board the main frame. Hydraulic open/close/locking of pipe clamps - with crash protection and without operator contact during operation. Easy trench welding, supplied complete and ready to weld from 500 to 1000mm or 20" to 40" diameter pipes and fittings between clamps 2 & 3, or 3 & 4 for tight work, plus high quality and sturdy construction provides an excellent machine for pipeline welding. Born from more than 50 years and three generations of experience with PE pipe, and having clients in more than 100 countries, Worldpoly manufactures the PolyRover and PolyForce range to provide a single platform for welding, according to high and low pressure standards. Worldpoly PolyForce1000/40 Auto AllTerrain is specifically designed for use in rugged and remote terrain, available in tracked, wheeled or trench options, easily operated CNC or manual control with operator safety well considered, and is pre-wired for the attachment of Worldpoly or other data loggers. Standard pricing includes all diameter clamps and stub device.

TECHNICAL SPECIFICATIONS

PolyForce1000 Australian Engineered Butt Welding Machine, including on-board hydraulic pump, controls, hydraulically movable facing tool and heating plate, hydraulic open/close/locking of pipe clamps

Provides both high and low pressure welding operation.

Welding operation by CNC or manual control. Optional 1000 weld data logger.

Genuine 36 month international warranty.

• Welding range 500 to 1000mm SDR11, according to DVS, ISO and AUS/NZ POP003 high and low force specifications.

- Easily able to weld between clamps 3 and 4 for tight fittings and fabrications.
 - Entire welding frame with 4 clamps and complete hydraulic system easily removed for trench work, allowing accurate alignment.
 - Fork lift and overhead lifting points.
- Includes two-piece reducing liners to weld pipe within the complete specified range:
- Metric – 1000, 900, 800, 710, 630, 560 and 500mm OD.
 - Optional inch clamps 42", 36", 32", 28", 24", 22" and 20".
- Hydraulic open/close/locking of pipe clamps with clamp crash protection, and no operator contact during operation.
- Hydraulically lifted cast Aluminium PTFE coated heating plate with electronic temperature control and insulated cover.
- Hydraulically lifted and electrically operated cast Aluminium electric facing tool, thermostatically controlled with current overload protection.
- High quality and remotely serviceable Bosch Rexroth electro-hydraulic pump, PLC, valves and controls.
- Wired ready to accept Worldpoly and other data loggers.
- Operating voltage 400 volt 3 phase 50 Hz (30.8 kw, 50.2 A). Optional 60 Hz also available.
- Intuitive modular controls located in convenient operator position include:
- Bosch Rexroth hydraulics.
 - Pipe clamps open, close and lock without operator contact. Ideal for Occupational Health and Safety requirements.
 - 2 x Emergency stops.
 - Choice of CNC or manual welding operation .
- Optional tracked base is easily removed for trench use, and doubles as a worksite work-horse featuring:
- Two-speed heavy duty rubber tracks.
 - Cummins Onan low-noise diesel generator
 - Both cordless and wired remot controls.
 - Remote engine start on operator side.
 - LED head, tail and warning lights.
 - Rated lifting points and cross-bar.
- Optional Steerable wheeled base readily removable for trench work.
- High quality wide profile all-terrain wheels and tyres.
 - Hydraulic pipe lifters front and rear.
 - Offset steering.
 - Not road registrable.
- Supplied with the machine:
- Two-piece clamps for welding 1000, 900, 800, 710, 630, 560 and 500mm OD pipes and fittings, or IPS equivalent.
 - Stub end device for welding end fittings (available in Aluminium or Steel)
 - Tool box including spare blades, thermocouple, temperature controller, tools etc

Please note technical specifications of Worldpoly machines may change without notice. Please confirm at time of order.


 COMING
SOON

PolyForce1000/40 Auto Track

Worldpoly PolyForce1000/40 Auto Track butt fusion machine. Australian Made.

High pressure (SHP) SDR 11 HDPE pipe fusion consistently above 100% of host pipe strength, with zero brittle failure at test.

Provides the highest quality and most consistent high and low pressure butt fusion possible.

High speed automatic changeover, and impossible to crash pipe faces after heating - significantly reduces brittle failure.

Automatic intuitive CNC or manual control. Highest possible level of weld quality.

Automatic control of temperature, time and pressure.

Fully automatic heating, changeover and cooling cycle during poly welding operation. Changeover time below 5 seconds.

Automatic detection of pipe slippage.

2000+ weld data logging when selected.

Hydraulic open/close/locking clamps, heating plate and facing tool without operator contact.

Clamps, heating plate and facing tool cannot crash with clamps.

Bosch Rexroth hydraulics for quality operation and easy local service.

Tracked base includes Kubota low-noise diesel generator, two speed rubber tracks with cordless or wired remote control, hydraulic pipe lifters left and right, base also operates as site utility device, LED head and tail light, LED warning light, remote start on operator side.

Occupational Health and Safety operator friendly operation.

Butt fusion between clamps 2 & 3, or 3 & 4 for bends, tees, tight welds etc.

Australian designed and manufactured, the toughest and arguably most easily operated butt welding machine on the market.

PolyForce1000/40 S2 Auto Tracked reduces butt welding time and workload on remote sites, allowing superb quality control, and faster, more efficient butt fusion of PE and PP pipelines. Under the correct site conditions, PolyForce1000/40 Auto Tracked can reduce welding time by more than 50%.

Practical design with the ability to weld at both high and low pressure, manual or CNC operation, hydraulically lifted facing tool and heating plate, hydraulic controls and pump all on-board the main welding frame.

Hydraulic open/close/locking of pipe clamps - with crash protection and without operator contact during operation.

Easy pipeline, trench or workshop HDPE welding, supplied complete with all diameter clamp liners and ready to weld from 500 to 1000mm diameter pipes and

fittings between clamps 2 & 3, or 3 & 4 for tight work, plus high quality and sturdy construction provides an excellent machine for pipeline welding.

Born from Worldpolys' more than 50 years and three generations of experience with PE pipe plus 3 years of dedicated R & D with Bosch Rexroth, and having clients in more than 100 countries, Worldpoly manufactures the PolyRover and PolyForce range in Australia to provide a single platform for HDPE pipe welding, according to high and low pressure standards.

Worldpoly PolyForce1000/40 Auto Tracked is specifically designed for use in rugged and remote terrain, available in tracked, wheeled or basic options, easily operated CNC or manual control with operator safety well considered, and pre-wired for the attachment of Worldpoly or other data loggers.

Standard pricing includes all diameter clamps and stub device.

PolyForce630 S2. Whether you call it a butt welder, a poly welder, a fusion welder or an HDPE welding machine, this is the automatic butt welding machine to take you to the next level.

TECHNICAL SPECIFICATIONS

PolyForce1000/40 Automatic Tracked - Australian Made

Track mounted, self contained and self propelled

Hydraulic in/out facing tool and heating plate with crash protection. No longer are these considered consumeables

Hydraulic open/close/locking of main clamps without operator contact

Kubota on-board low-noise low fuel consumption 1500 RPM generator. 67 dB at operator position.

Simple operation. Automatic or manual. 2000+ weld data logging when chosen

Bosch Rexroth hydraulics - locally serviceable

Two-speed Italian tracks

Wireless remote control of tracked base. Wired control also supplied for emergencies

Pipe clamps provide prevent slippage even under extreme conditions

Hydraulic pipe lifters front and rear

Tracked base completely self-contained for use as utility vehicle on-site

Self-contained welding unit easily removed for site and trench work

Long operating time thanks to 1500 RPM low-noise diesel - 18 to 25 hours under normal welding conditions

Built tough, locally serviceable, low-noise. Just what you've been looking for

Specifications:

Capacity 500 to 1000mm OD / alternatively 40" to 20". Two-piece clamp inserts for pipe and fittings diameters 1000, 900, 800, 710, 630, 560 and 500mm, and stub device, are included

Electric start with remote start on operator side

Welded steel welding machine frame and tracked base

Italian track assembly, rubber tracks, two-speed, 30+ degree capacity, automatic braking when stopped

Wireless remote control. Wired emergency control

Rated lifting points on welding machine and frame, spreader bar included

Maximum pump operating pressure - 200 bar / 20 MPa

Fuel capacity - 70 litres

Engine - Kubota 24.5 kW (32.8 hp), 2434 cc, 4 cylinder 1500 RPM low-noise diesel

Weight - 5400 kg

Technical specifications subject to change without notice. Please check at time of order confirmation.



PolyBasic160M

A manually operated butt-welding machine suitable for PE and PP pipes and fittings from 40 to 160mm OD. Efficient design and construction provides an excellent low cost machine for welding both on the worksite and in the factory. The use of high quality Aluminium castings allows for lower weight without compromising strength and performance. Optional torque wrench allows welding force to be read.



TECHNICAL SPECIFICATIONS

Welding range 40 to 160mm: SDR 11 (PN16) to SDR 41 (PN4).

Complete and ready to weld.

Genuine 12 months international warranty.

Main frame includes light weight alloy main clamps of 160mm diameter.

Layer clamps 160x140, 140x125, 125x110, 110x90, 90x75, 75x63, 63x50 & 50x40mm.

Removable cast Aluminum PTFE coated heating plate with electronic temperature control.

Removable cast Aluminum electrically operated facing tool.

Stand for heating plate and facing tool.

Manual opening of frame. Optional torque wrench for measurement of welding force.

230 volt 50 Hz (2.2 kw 11.1 A).

Requires generator minimum 2.3 KVA.

Weight 77kg

Please note technical specifications of Worldpoly machines may change without notice



Worldpoly160

Worldpoly160 hydraulically operated butt-welding machine suitable for PE and PP pipes and fittings from 50 to 160mm OD using low force welding methods. Excellent Australian Engineered design and construction provides a premium machine for welding both on the worksite and in the factory. The use of high quality pressure-cast Aluminium castings allows for lower weight without compromising strength and performance, while providing extra strength when welding out-of-round pipe. Significantly increased force is available for drag when welding pipe strings, or on difficult sites. Welding can be carried out between clamps 3 & 4 for tees, bends and manifold work. Can be immediately integrated with optional data logger. Additional clamps available to weld to 50mm.



TECHNICAL SPECIFICATIONS

Welding range 50 to 160mm: SDR 9 (PN20) to SDR 41 (PN4) according to DVS 2207-1, ISO 21307 and POP003 low-pressure specifications

Complete and ready to weld - Genuine 2 year warranty on parts - CE approved by SGS www.sgs.com

Included as standard (unless otherwise specified):

- Main frame, including 4 light weight pressure-cast alloy main clamps of 160mm diameter
- Removable cast Aluminium electric facing tool with current overload protection
- Electrohydraulic pump with controls, and quick release hoses. Includes countdown timers for heating and cooling phases
- PTFE coated heating plate with electronic temperature control (heating plate automatically separates from pipe ends after heating)
- Stand for heating plate and facing tool
- Tool box including tools, bolts, selected spare parts, etc
- German hydraulic seals
- Wired ready to accept Worldpoly or other data logger

Clamp options include (machine can be supplied with any combination of liner diameters):

- Layer clamps: 160x140, 140x125, 125x110, 110x90, 90x75, 75x63, 63x50
- 2-piece liners: 160x140, 160x125, 160x110, 160x90, 160x75, 160x63
- Narrow clamps: 160x140, 160x125, 160x110, 160x90, 160x75, 160x63

Optional stub end device for welding end fittings (available in aluminium or steel)

Optional wheeled trolley available

230 volt 50 Hz (2.78 kw 14.8A)

Requires generator minimum 230 volt 3.3 KVA - provide full machine details to generator supplier before purchase

Total cylinder section 6.26 cm2

Weight 156kg

Please note technical specifications of Worldpoly machines may change without notice



Worldpoly250

Worldpoly250 hydraulically operated butt-welding machine suitable for PE and PP pipes and fittings from 63 to 250mm OD. Excellent design and construction provides a premium machine for welding both on the worksite and in the factory. The use of high quality pressure-cast Aluminium castings allows for lower weight without compromising strength and performance, while providing extra strength when welding out-of-round pipe. Welding can be carried out between clamps 3 & 4 for tees, bends and manifold work. Can be immediately integrated with optional data logger.



TECHNICAL SPECIFICATIONS

Welding range 63 to 250mm: SDR 9 (PN20) to SDR 41 (PN4) according to DVS 2207-1, ISO 21307 and POP003 low-pressure specifications.

Complete and ready to weld.

Genuine 2 year international warranty

German hydraulic seals.

CE approved by SGS www.sgs.com

Main frame includes 4 light weight pressure-cast alloy main clamps of 250mm diameter.

Machine can be supplied with any combination of liner diameters. Clamp options include:

Layer clamps: 250x225, 225x200, 200x180, 180x160, 160x140, 140x125, 125x110, 110x90, 90x75 & 75x63.

2-piece liners: 250x225, 250x200, 250x180, 250x160, 250x140, 250x125, 250x110, 250x90, 250x75 & 250x63.

Narrow clamps: 250x225, 250x200, 250x180, 250x160, 250x140, 250x125, 250x110, 250x90, 250x75 & 250x63.

Removable cast Aluminium PTFE coated heating plate with electronic temperature control. Heating plate automatically separates from pipe ends after heating

Electrically operated facing tool for the preparation of pipe ends.

Stand for heating plate and facing tool.

Electro hydraulic pump with controls, and quick release hoses. Includes countdown timers for heating and cooling phases.

Tool box including tools, bolts etc.

Optional stub end device for welding end fittings (available in aluminium or steel).

Wired ready to accept Worldpoly or other data logger.

Optional wheeled trolley available.

230V total power draw - 4.15kW, 19.6 Amps.

Requires generator minimum 4.4 KVA. Provide full machine details to generator supplier before purchase.

Total cylinder area: 11cm².

Total weight 166kg

Please note technical specifications of Worldpoly machines may change without notice



Worldpoly250 CNC

Worldpoly250 CNC hydraulically operated butt-welding machine, suitable for PE and PP pipes and fittings from 90 to 250mm OD. Excellent design and construction provides a premium machine for welding both on the worksite and in the factory. Integrated CNC control ensures correct welding procedures including temperature, time and pressure functions. The use of high quality pressure-cast Aluminium castings allows for lower weight without compromising strength and performance, while providing extra strength when welding out-of-round pipe. Welding can be carried out between clamps 3 & 4 for tees, bends and manifold work. Can be immediately integrated with optional data logger.



TECHNICAL SPECIFICATIONS

Welding range 90 to 250mm SDR 9 (PN20) to SDR 41 (PN4) according to DVS 2207-1, ISO 21307 and POP003 low-pressure specifications.

Complete and ready to weld.

CNC controlled temperature, time and pressure functions.

German hydraulic seals.

Main frame includes 4 light weight pressure-cast alloy main clamps of 250mm diameter.

Machine can be supplied with any combination of liner diameters. Clamp options include:

Layer clamps: 250x225, 225x200, 200x180, 180x160, 160x140, 140x125, 125x110, 110x90.

CNC controlled electro hydraulic pump with quick release hoses.

CNC controlled jump-up cast Aluminum PTFE coated heated plate with electronic temperature control. Heating plate automatically separates from pipe ends after heating.

Electrically operated facing tool for correct preparation of pipe ends.

Stand for facing tool.

Tool box including tools, bolts etc.

Optional Aluminium or steel stub end device for welding end fittings.

Wired ready to accept Worldpoly or other data logger.

Genuine 2 year international warranty.

Optional wheeled trolley available.

Please note technical specifications of Worldpoly machines may change without notice



Worldpoly315

Worldpoly315 hydraulically operated HDPE pipe butt welding machine, suitable for PE and PP pipes and fittings from 90 to 315mm OD. Butt welding can be carried out between clamps 3 & 4 for tees, bends and manifold work, and the fusion machine can be immediately integrated with optional data logger. Able to cope with out-of-round pipe and less than perfect site conditions better than the Europeans, and with parts and service readily available, Worldpoly315 poly pipe fusion machine will be providing you with excellent service for years. Worldpoly315 HDPE welding machine. When you want a polyethylene pipe fusion machine that will provide excellent HDPE pipe fusion for years, but don't want to pay a fortune.



TECHNICAL SPECIFICATIONS

Welding range 90 to 315mm SDR 9 (PN20) to SDR 41 (PN4) according to DVS 2207-1, ISO 21307 and POP003 low-pressure specifications.

Complete and ready to weld - Genuine 2 year warranty on parts - CE approved by SGS www.sgs.com

Included as standard (unless otherwise specified):

- Main frame, including 4 light weight pressure-cast alloy main clamps of 315mm diameter
- Removable cast Aluminium electric facing tool with current overload protection
- Electrohydraulic pump with controls, and quick release hoses. Includes countdown timers for heating and cooling phases
- PTFE coated heating plate with electronic temperature control (heating plate automatically separates from pipe ends after heating)
- Stand for heating plate and facing tool.
- Tool box including tools, bolts, selected spare parts, etc
- German hydraulic seals.
- Wired ready to accept Worldpoly or other data logger.

Clamp options include (machine can be supplied with any combination of liner diameters):

- Layer clamps: 315x280, 280x250, 250x225, 225x200, 200x180, 180x160, 160x140, 140x125, 125x110, 110x90.
- 2-piece liners: 315x280, 315x250, 315x225, 315x200, 315x180, 315x160, 160x140, 160x125, 160x110, 160x90.
- Narrow clamps: 315x280, 315x250, 315x225, 315x200, 315x180, 315x160, 315x140, 315x125, 315x110, 315x90.

Optional Aluminium or steel stub end device for butt welding end fittings.

Optional wheeled trolley available.

230 volt 50 Hz, 5.0 kw, 15 A. Optional 60 Hz also available.

Requires generator minimum: 230 volt - 5.3 KVA. Provide full machine details to generator supplier before purchase.

Total cylinder area: 20cm² / 2000mm²

Weight 355kg

Please note technical specifications of Worldpoly machines may change without notice



Worldpoly315 High Pressure

High and low-pressure welding. Worldpoly 315 / 12" High Pressure is a hydraulically operated butt-welding machine suitable for PE and PP pipes and fittings from 90 to 315mm OD (alternatively 3" to 12" IPS), using both high and low pressure welding methods. Excellent Australian Engineered design and construction provides a premium machine for welding both on the worksite and in the factory. The use of high quality construction allows for lower weight without compromising strength and performance, while providing extra strength when welding out-of-round pipe. Significantly increased force is available for drag when welding pipe strings, or on difficult sites. Welding can be carried out between clamps 3 & 4 for tees, bends and manifold work, and the machine is pre-wired for immediate integration with optional data logger.

TECHNICAL SPECIFICATIONS

Welding range 90 to 315mm SDR 9 (PN20) to SDR 17. 90 to 160mm SDR 9 and 11 only.

Welds both high and low pressure according to ISO, ASTM, ANZ POP003, and DVS low pressure.

Complete and ready to weld pipe and fittings diameters 315, 280, 250, 225, 200, 180, 160, 140, 125, 110 and 90mm OD.

German hydraulic seals.

Genuine 12 month international warranty.

Supplied with complete set of two-piece clamps liners. including 315x280, 315x250, 315x225, 315x200, 315x180, 315x160, 160x140, 160x125, 160x110, 160x90.

Electro-hydraulic pump with controls, and quick release hoses.

Removable cast Aluminum PTFE coated heater plate with electronic temperature control. Heating plate automatically separates from pipe ends after heating.

Electrically operated facing tool for correct preparation of pipe ends.

Stand for heating plate and facing tool.

Includes Aluminium stub end device for welding end fittings.

Tool box including tools, bolts etc.

Easily welds between clamps 3 and 4 for tees, fabrications and tight welds. Low pressure welding only when using single clamp.

Wired ready to accept Worldpoly or other data logger.

Clamp options include:

- Narrow clamps: 315x280, 315x250, 315x225, 315x200, 315x180, 315x160, 315x140, 315x125, 315x110, 315x90.

- Inch clamps.

230 volt, single phase, 50 hz. 9.8 kw, 22.9 A. Uses 2 x 15 A input leads. Optional 60 Hz also available.

Minimum generator required: 230 volt - 11 KVA. Provide full machine details to generator supplier before purchase.

Total cylinder area: 20.0 cm² / 2000 mm².

Please note that the Worldpoly High Force machines are not certified under CE requirements.

Weight 355kg.

Specifications are subject to change without notice. Please confirm at time of purchase.



Worldpoly450

Worldpoly450 hydraulically operated butt-welding machine suitable for PE and PP pipes and fittings from 200 to 450mm OD. Excellent design and construction provides a premium machine for welding both on the worksite and in the factory. The use of high quality pressure-cast Aluminium castings allows for lower weight without compromising strength and performance, while providing extra strength when welding out-of-round pipe. Welding can be carried out between clamps 3 & 4 for tees, bends and manifold work. Can be immediately integrated with optional data logger and overhead electric crane.



TECHNICAL SPECIFICATIONS

Welding range 200 to 450mm: SDR 9 (PN20) to SDR 41 (PN4) according to DVS 2207-1, ISO 21307 and POP003 low-pressure specifications.

Complete and ready to weld.

CE approved by SGS www.sgs.com

German hydraulic seals.

Main frame includes 4 light weight pressure-cast alloy main clamps of 450mm diameter.

Machine can be supplied with any combination of liner diameters. Clamp options include:

Layer clamps: 450x400, 400x355, 355x315, 315x280, 280x250, 250x225, 225x200.

2-piece liners: 450x400, 450x355, 450x315, 450x280, 315x250, 315x225, 315x200.

Narrow clamps: 450x400, 450x355, 450x315, 450x280, 450x250, 450x225, 450x200.

Removable cast Aluminium PTFE coated heating plate with electronic temperature control. Heating plate automatically separates from pipe ends after heating.

Removable cast Aluminium electric facing tool with current overload protection.

Electrohydraulic pump with controls, and quick release hoses. Includes countdown timers for heating and cooling phases.

Stand for heating plate and facing tool.

Optional Aluminium or steel stub end device for welding end fittings.

Tool box including tools, bolts etc.

Optional wheeled trolley available.

Genuine 2 year international warranty.

Optional 250kg capacity crane assembly.

Wired ready to accept Worldpoly or other data logger.

400V 3 phase 50 Hz (10.5 kw 18.4 A) alt 220 volt 50 hz (9.8 kw 22.9 A)

Minimum generator required: 400 volt 3 phase 11 KVA (alt 230 volt 1 phase 11 KVA). Provide full machine details to generator supplier before purchase.

Weight 776kg (including crane and stub device)

Total cylinder area: 22.36cm²

Specifications are subject to change without notice. Please confirm at time of purchase.

Worldpoly450 High Pressure

High and low-pressure welding. Worldpoly450 High Pressure is a hydraulically operated butt-welding machine suitable for PE and PP pipes and fittings from 200 to 450mm OD, using both high and low pressure welding methods. Excellent Australian Engineered design and construction provides a premium machine for welding both on the worksite and in the factory. The use of high quality pressure-cast Aluminium clamps allows for lower weight without compromising strength and performance, while providing extra strength when welding out-of-round pipe. Significantly increased force is available for drag when welding pipe strings, or on difficult sites. Welding can be carried out between clamps 3 & 4 for tees, bends and manifold work, and the machine is pre-wired for immediate integration with optional data logger, and overhead electric crane.



TECHNICAL SPECIFICATIONS

Welding range 200 to 450mm SDR 9 (PN20) to SDR 17. 200 to 250mm SDR 9 and 11 only.

Welds both high and low pressure according to ISO, ASTM, ANZ POP003, and DVS low pressure.

Complete and ready to weld pipe and fittings diameters 450, 400, 355, 315, 280, 250, 225 and 200mm OD.

German hydraulic seals.

Genuine 12 month international warranty.

Supplied with complete set of Aluminium cast two-piece lines 450x400, 450x355, 450x315, 450x280, 315x250, 315x225, 315x200.

Electro-hydraulic pump with controls, and quick release hoses.

Removable cast Aluminum PTFE coated heating plate with electronic temperature control. Heating plate automatically separates from pipe ends after heating.

Electrically operated facing tool for correct preparation of pipe ends.

Stand for heating plate and facing tool.

Includes Aluminium stub end device for welding end fittings.

Tool box including tools, bolts etc.

Easily welds between clamps 3 and 4 for tees, fabrications and tight welds. Low pressure welding only when using single clamp.

Wired ready to accept Worldpoly or other data loggers.

Clamp options include:

- Narrow clamps: 450x400, 450x355, 450x315, 450x280, 450x250, 450x225, 450x200.

- Inch clamps.

Optional overhead electric crane. Check requirements for crane approval regarding your specific application.

400V 3 phase 50 Hz (10.5 kw 18.4 A).

Minimum generator required: 400 volt 3 phase 11 KVA (alt 230 volt 1 phase 11 KVA). Provide full machine details to generator supplier before purchase.

Total cylinder area: 22.36 cm² / 2236 mm²

Please note that the Worldpoly High Force machines are not certified under CE requirements.

Weight 776kg (including crane and stub device)

Specifications are subject to change without notice. Please confirm at time of purchase.



Worldpoly500

Worldpoly500 hydraulically operated butt-welding machine suitable for PE and PP pipes and fittings from 250 to 500mm OD. Excellent design and construction provides a premium machine for welding both on the worksite and in the factory. The use of high quality pressure-cast Aluminium castings allows for lower weight without compromising strength and performance, while providing extra strength when welding out-of-round pipe. Welding can be carried out between clamps 3 & 4 for tees, bends and manifold work. Can be immediately integrated with optional data logger and overhead electric crane.



TECHNICAL SPECIFICATIONS

Welding range 250mm to 500mm: SDR 9 (PN20) to SDR 41 (PN4) according to DVS 2207-1, ISO 21307 and POP003 low-pressure specifications..

Complete and ready to weld.

German hydraulic seals.

Main frame includes 4 light weight pressure-cast alloy main clamps of 500mm diameter.

Machine can be supplied with any combination of liner diameters.

Layer clamps: 500x450, 450x400, 400x355, 355x315, 315x280 and 280x250.

2-piece clamps: 500x450, 500x400, 500x355, 500x315, 500x280, 500x250.

Narrow clamps: 500x450, 500x400, 500x355, 500x315, 500x280, 500x250.

Removable cast Aluminium PTFE coated heated plate with electronic temperature control. Heating plate automatically separates from pipe ends after heating.

Removable cast Aluminium electric facing tool with current overload protection.

Stand for heating plate and facing tool.

Electro hydraulic pump with controls, and quick release hoses. Includes countdown timers for heating and cooling phases.

Optional Aluminium or steel stub end device for welding end fittings.

Genuine 2 year International warranty.

Wired ready to accept Worldpoly or other data logger.

Tool box including tools, bolts etc.

Optional wheeled trolley available.

Optional 250kg crane assembly.

400 volt 3 phase 50 Hz (10.0 kw 22 A). Optional 60 Hz also available.

Minimum generator required: 400 volt 12 KVA. Provide full machine details to generator supplier before purchase.

Weight 592kg (including crane and stub device)

Total cylinder area: 23.06cm² (2306mm²)

Please note technical specifications of Worldpoly machines may change without notice



Worldpoly630

Worldpoly630 hydraulically operated butt welding machine suitable for HDPE and PP pipes and fittings from 315 to 630mm OD / 12" to 22".

Excellent design and construction provides a premium machine for butt welding both on the worksite and in the factory.

The use of high quality pressure-cast Aluminium castings allows for lower weight without compromising strength and performance, while providing extra strength when welding out-of-round pipe.

Welding can be carried out between clamps 3 & 4 for tees, bends and manifold work.

Can be immediately integrated with optional data logger and overhead electric crane.

Worldpoly630. CE approved by the Swiss. This is the HDPE pipe butt welding machine to invest in when you want it to be with you reliably for years, without spending a fortune.

TECHNICAL SPECIFICATIONS

Welding range 315mm to 630mm: SDR 9 (PN20) to SDR 41 (PN4) according to DVS 2207-1, ISO 21307 and POP003 low-pressure specifications..

Complete and ready to weld.

CE approved by SGS www.sgs.com

German hydraulic seals.

Main frame includes 4 light weight pressure-cast alloy main clamps of 630mm diameter.

Machine can be supplied with any combination of liner diameters. Clamp options include:

Layer clamps: 630x560, 560x500, 500x450, 450x400, 400x355, 355x315.

2-piece liners: 630x560, 630x500, 630x450, 630x400, 450x355, 450x315.

Narrow clamps: 630x560, 630x500, 630x450, 630x400, 630x355, 630x315.

Removable cast Aluminium PTFE coated heated plate with electronic temperature control. Heating plate automatically separates from pipe ends after heating.

Removable cast Aluminium electric facing tool with current overload protection.

Stand for heating plate and facing tool.

Electro hydraulic pump with controls, and quick release hoses. Includes countdown timers for heating and cooling phases.

Optional Aluminium or steel stub end device for welding end fittings.

Genuine 2 year international warranty.

Wired ready to accept Worldpoly or other data logger.

Tool box including tools, bolts etc.

Optional wheeled trolley available.

Optional 250kg crane assembly.

400 volt 3 phase 50 Hz (14.5 kw 24.2 A). Optional 60 Hz also available.

Minimum generator required: 400 volt 3 phase 16 KVA. Provide full machine details to generator supplier before purchase.

Weight 1,092kg (including crane and stub device)

Total cylinder area: 23.06cm² (2306mm²)

Please note technical specifications of Worldpoly machines may change without notice



Worldpoly800

Worldpoly800 hydraulically operated butt-welding machine suitable for PE and PP pipes and fittings from 450 (optionally 400) to 800mm OD. Excellent design and construction provides a premium machine for welding both on the worksite and in the factory. The use of high quality Aluminium castings allows for lower weight without compromising strength and performance. Welding can be carried out between clamps 3 & 4 for tees, bends and manifold work. Can be integrated with optional data logger and overhead electric crane.



TECHNICAL SPECIFICATIONS

Welding range 450 to 800mm: SDR 9 (PN20) to SDR 41 (PN4). Optional modification to 400mm SDR 11 to SDR 17

Welding force maximum 800mm OD SDR 9 plus 30% drag, according to according to DVS 2207-1, ISO 21307 and POP003 low-pressure specifications.

Complete and ready to weld.

CE approved by SGS www.sgs.com

German hydraulic seals.

Main frame includes 4 light weight alloy main clamps of 800mm diameter.

Clamp options include:

Layer clamps: 800x710, 710x630, 630x560, 560x500, 500x450.

2-piece liners: 800x710, 800x630, 630x560, 630x500, 630x450.

Narrow clamps: 800x710, 800x630, 800x560, 800x500, 800x450.

Machine can be supplied with any combination of liner diameters.

Aluminium PTFE coated heating plate with electronic temperature control.

Electrically operated facing tool for correct preparation of pipe ends.

Electro hydraulic pump with controls, and quick release hoses. Includes countdown timers for heating and cooling phases.

Stand for heating plate and facing tool.

Overhead electric crane included with standard machine (note please check crane regulations in your country for suitability).

Optional Aluminium or steel stub end device for welding end fittings.

Wired ready to accept Worldpoly or other data logger.

Genuine 2 year international warranty.

Tool box including tools, bolts etc.

Optional wheeled trolley available.

Optional 500kg crane assembly.

400 volt 3 ph 50 Hz (19.3 kw 32.7 A). Optional 60 Hz also available.

Minimum generator required: 400 volt 20 KVA. Provide full machine details to generator supplier before purchase.

Weight 1,720kg (including crane and stub device)

Total cylinder area: 20.4cm²

Please note technical specifications of Worldpoly machines may change without notice



Worldpoly1000

Worldpoly1000 hydraulically operated butt-welding machine suitable for PE and PP pipes and fittings from 500 to 1000mm or 36" to 20" OD. Excellent design and construction provide a premium machine for welding both on the worksite and in the factory. The use of high quality construction allows for lower weight without compromising strength and performance. Welding can be carried out between clamps 3 & 4 for tees, bends and manifold work, and the machine is easily integrated with optional data logger and overhead electric crane.



TECHNICAL SPECIFICATIONS

Welding range 500mm to 1000mm: SDR 11 (PN16) to SDR 41 (PN4). 500 to 630 SDR 9 / alt 20" to 36" SDR 11. 22" & 24" SDR 9.

Welding force maximum 1000mm OD SDR 7.4 plus, according to DVS 2207-1, ISO 21307 and POP003 low-pressure specifications.

Complete and ready to weld.

Main frame includes 4 light weight alloy main clamps of 1000mm.

Genuine 2 year International warranty.

CE approved by SGS www.sgs.com

German hydraulic seals.

Machine can be supplied with any combination of optional liner diameters.

Layer clamps: 1000x900, 900x800, 800x710, 710x630, 710 x 560, 710 x 500.

Layer clamps 40" x 36", 36" x 32", 32" x 28", 28" x 24", 24" x 22" and 22" x 20".

Two-piece clamps 40" x 36", 40" x 32", 40" x 28", 28" x 24", 28" x 22" and 28" x 20".

Electrohydraulic pump with controls, accumulator and quick release hoses. Includes countdown timers for heating and cooling phases.

Removable cast Aluminum PTFE coated heating plate with electronic temperature control. Heating plate automatically separates from pipe

ends after heating.

Removable cast Aluminium electric facing tool with current overload protection.

Stand for heating plate and facing tool and tool box.

Optional stub end device for welding end fittings (available in aluminium or steel).

Wired ready to accept Worldpoly or other data logger.

Tool box including tools, bolts etc.

Optional 500kg / 1100lb. capacity crane assembly.

400 volt 3 phase 50 Hz (30.8 kw, 50.2 A). Optional 60 Hz also available.

Minimum generator required: 400 volt 32 KVA. Provide full machine details to generator supplier before purchase.

Weight 2,687kg (including crane and stub device)

Total cylinder area: 43.60cm²

Please note technical specifications of Worldpoly machines may change without notice



Worldpoly1200/48

Worldpoly1200/48 hydraulically operated butt-welding machine, suitable for PE and PP pipes and fittings from 630 to 1200mm OD, alternatively 24 to 48". The machine is the result of more than 50 years of consecutive involvement in the PE pipe industry, providing a premium machine for welding both on the work-site and in the factory. The use of virgin Aluminium castings and German hydraulic seals allows for lower weight without compromising strength and performance. Welding can be carried out between clamps 3 & 4 for tees, bends and manifold work. Can be integrated with optional data logger and overhead electric crane.



TECHNICAL SPECIFICATIONS

Welding range 630 to 1200mm: SDR 11 (PN16) to SDR 41 (PN4). 630 to 800mm: SDR 9 to SDR 41.

Welding force maximum 1200mm OD SDR 11, according to DVS 2207-1, ISO 21307 and POP003 low-pressure specifications.

Complete and ready to weld.

CE approved by SGS www.sgs.com

German hydraulic seals.

Main frame includes 4 light weight alloy main clamps of 1200mm diameter.

Layer clamps: 1200x1100, 1100x1000, 1000x900, 900x800, 800x710, 710x630.

Machine can be supplied with any combination of liner diameters.

Aluminium PTFE coated heating plate with electronic temperature control. Heating plate automatically releases from pipe ends after heating.

Electrically operated facing tool for correct preparation of pipe ends.

Stand for heating plate and facing tool.

Electrohydraulic pump with controls, accumulator and quick release hoses. Includes countdown timers for heating and cooling phases.

Genuine 2 year international warranty.

Optional Aluminium or steel stub end device for welding end fittings.

Wired ready to accept Worldpoly or other data logger.

Tool box including tools, bolts etc.

Optional wheeled trolley available.

Optional 1,000kg crane assembly.

400 volt 3 phase 50 hz (30.6 kw, 47.6 A).

Minimum generator required: 400 volt 3 phase 50 hz, 32 KVA. Provide full machine details to generator supplier before purchase.

Weight 4,522kg (including crane and stub device)

Total cylinder area: 32.97cm²

Please note technical specifications of Worldpoly machines may change without notice



Worldpoly1600

Worldpoly1600 hydraulically operated butt-welding machine suitable for PE and PP pipes and fittings from 1000 to 1600mm, or alternatively 42" to 60" OD. Available to weld according to ISO/DVS/POP003 SLP & DLP low pressure, and optionally both low and high-pressure according to ISO, POP003 and North American Standards. Excellent design and construction provide a premium machine for welding both on the worksite and in the factory. Welding can be carried out between clamps 3 & 4 for tees, bends and manifold work. All hydraulics and controls are located on the main welding frame. Can be integrated with optional data logger.

TECHNICAL SPECIFICATIONS

Standard welding range 1600mm SDR 17 to 1200mm SDR 11. Optional extension to include 1000mm and 900mm.

Optional upgrade to weld 1600mm SDR 11 to 900mm SDR 11.

CE approved by SGS www.sgs.com

Genuine 2 year international warranty.

Main frame includes 4 steel main clamps of 1600mm diameter. Heating plate is automatically separated from the pipe at the end of the heating cycle.

Layer clamps: 1600x1400, 1400x1200mm. With modification: 1200x1100, 1100x1000, 1000x900mm.

Electrohydraulic pump with controls and accumulator are mounted on the main frame. Includes countdown timers for heating and cooling phases.

Removable steel electric facing tool with current overload protection.

Aluminium PTFE coated heating plate with electronic temperature control. Heating plate automatically releases from pipe ends after heating.

Stand for heating plate and facing tool.

Wired ready to accept Worldpoly or other data logger.

Tool box including tools, bolts etc.

400 volt 3 phase 50 Hz (54 kw 86 A) alt 440 volt 3 phase 60 hz (63 kw 100 A).

Minimum generator 400 volt 60 KVA. Check with your generator supplier for suitability.

Total cylinder section: optional 68.7 cm² or 95.4 cm²

Please note technical specifications of Worldpoly machines may change without notice



Worldpoly2000

Worldpoly2000 hydraulically operated butt-welding machine suitable for PE and PP pipes and fittings from 1600mm to 2000mm or alternatively 64" to 76" OD. Available to weld according to ASTM, ISO/DVS/POP003 SLP & DLP low pressure, and optionally both low and high-pressure according to ISO, POP003 and North American Standards. Hydraulic locking of main clamps. Excellent design and construction provide a premium machine for welding both on the worksite and in the factory. Welding can be carried out between clamps 3 & 4 for tees, bends and manifold work. All hydraulics and controls are located on the main welding frame. Can be integrated with optional data logger.

TECHNICAL SPECIFICATIONS

Genuine 2 year international warranty.

Welding range 2000mm to 1400mm, alternatively 80" IPS (2032mm OD) to 54" (1371.6 mm OD), SDR 33 to SDR 17

Removable cast Aluminium electric facing tool with current overload protection.

Removable cast Aluminium PTFE coated heating plate with electronic temperature control.

Stand for heating plate and facing tool.

On-board electrohydraulic pump with controls, accumulator and quick release hoses. Includes countdown timers for heating and cooling phases.

400 volt 3 phase 50 Hz, 88 KW 125 Amps.

Cylinder section 65 cm², 6500 mm².

Please note technical specifications of Worldpoly machines may change without notice



Worldpoly2200

Worldpoly2200/88" hydraulically operated butt-welding machine suitable for PE and PP pipes and fittings from 1400 to 2200mm, or alternatively 54" to 80" OD. Available to weld according to ISO/DVS/POP003 SLP & DLP low pressure, and optionally both low and high-pressure according to ISO, POP003 and North American Standards. Excellent design and construction provide a premium machine for welding both on the worksite and in the factory. Welding can be carried out between clamps 3 & 4 for tees, bends and manifold work. All hydraulics and controls are located on the main welding frame. Can be integrated with optional data logger.

TECHNICAL SPECIFICATIONS

Genuine 2 year international warranty.

Welding range 2200mm to 1400mm, alternatively 88" IPS (2235mm OD) to 54" (1371.6 mm OD), SDR 33 to SDR 17

Removable cast Aluminium electric facing tool with current overload protection.

Removable cast Aluminium PTFE coated heating plate with electronic temperature control.

Stand for heating plate and facing tool. Optional trolley base.

On-board electrohydraulic pump with controls, accumulator and quick release hoses. Includes countdown timers for heating and cooling phases.

Optional trolley base.

400 volt 3 phase 50 Hz. Optional 60 Hz.

Please note technical specifications of Worldpoly machines may change without notice. Please confirm at time of order.



**COMING
SOON**

Worldpoly3000

Worldpoly3000 hydraulically operated butt-welding machine suitable for PE and PP pipes and fittings. High quality design and construction provide a premium machine for welding both on the worksite and in the factory. The use of high quality Aluminium castings allows for lower weight without compromising strength and performance. Can be easily integrated with optional data logger.

TECHNICAL SPECIFICATIONS

To be confirmed.



Trolleys

Worldpoly supplies purpose built trolleys to carry the entire machine including main frame, facing tool, heating plate and hydraulic unit, or for the main frame only. Please contact our Sales Department on sales@worldpoly.com, or +61 (0)3 8795 3888 for details.

TECHNICAL SPECIFICATIONS

Trolleys are available to carry all parts of the welding machine including main frame, hydraulic unit, facing tool and heating plate.

Worldpoly has a standard range of trolley designs including in-line and lateral mounting of the main frame.

We also offer to produce trolleys to your specific requirements.

WORKSHOP MACHINES



Workshop equipment for the production of manifolds, fabrications, pipe spools, bends, tees, crosses, branch fittings, wyes, reduced outlet tees and general fabrications.

- **FITTINGS PRODUCTION**
- **PIPE SAWS**
- **SADDLE FUSION MACHINES**



PolyWorkshop315

Hydraulically operated workshop machine for the butt-welding of pipes and fittings in PE, PP and other thermoplastic materials. Pivoting clamps allow for the fabrication of segmented bends of different radii. Optional clamps allow the production of bends from 90 to 315mm OD, 90 to 315mm 90 degree equal tees and crosses, and 45 and 60 degree branch tees 90mm to 315mm. Includes pressure transducer and wiring ready to immediately accept optional data logger.



TECHNICAL SPECIFICATIONS

CE approved by SGS www.sgs.com

Genuine 24 month international warranty.

German hydraulic seals.

Welding range: 90 to 315mm SDR 9 (PN20) to SDR 41 (PN4).

Segmented bends range 90, 110, 125, 140, 160, 180, 200, 225, 250, 280 & 315mm.

90 degree equal tees and crosses range 90, 110, 125, 140, 160, 180, 200, 225, 250, 280 & 315mm.

Optional clamps for 45 and 60 degree branch tees 90, 110, 125, 140, 160, 180, 200, 225, 250, 280 & 315mm.

Optional narrow fittings clamp.

Optional stub device.

Immediately accepts optional data logger.

230 volt 1 phase 50 Hz (7.3 kw 36 A) alt. 380 volt 3 phase 50 Hz (7.3 kw 12 A) alt. 400 volt 3 phase 50 Hz (8.3 kw 13.4 A). Optional 60 Hz also available.

Cylinder area 12.56cm²

Please note technical specifications of Worldpoly machines may change without notice



PolyWorkshop450

Hydraulically operated workshop machine for the butt-welding of pipes and fittings in PE, PP and other thermoplastic materials. Pivoting clamps allow for the fabrication of segmented bends of different radii. Optional clamps allow the production of bends from 160 to 450mm OD and 160 to 450mm 90 degree equal tees and crosses. Includes pressure transducer and wiring ready to immediately accept optional data logger. CNC control of welding operation available as an option.

TECHNICAL SPECIFICATIONS

CE approved by SGS www.sgs.com

Welding range 160mm to 450mm SDR 9 (PN20) to SDR 41 (PN4).

Bend clamps produce segmented bends range: 160, 180, 200, 225, 250, 280, 315, 355, 400 & 450mm.

Tee and cross clamps produce 90 degree equal tees and crosses range: 160, 180, 200, 225, 250, 280, 315, 355, 400 & 450mm.

Wye / branch tee clamps produce true-Y, 45 and 60 degree branch tees (Y-branch fittings) range: 160, 180, 200, 225, 250, 280, 315, 355, 400 & 450mm.

Immediately accepts optional data logger.

400 volt 3 phase 50 Hz (18.9 kw 32.6 A). Optional 60 Hz also available.

Genuine 12 month international warranty

German hydraulic seals.

Cylinder area 12.56cm²

Please note technical specifications of Worldpoly machines may change without notice



PolyWorkshop630

Hydraulically operated workshop machine for the butt-welding of pipes and fittings in PE, PP and other thermoplastic materials. Pivoting clamps allow for the fabrication of segmented bends of different radii. Optional clamps allow the production of bends from 315 to 630mm OD, 315 to 630mm 90 degree equal tees and crosses, and 45 and 60 degree branch tees 315mm to 630mm. Includes pressure transducer and wiring ready to immediately accept optional data logger. CNC control of welding cycle available as an option.



TECHNICAL SPECIFICATIONS

CE approved by SGS www.sgs.com

Welding range 315 to 630mm SDR 9 to SDR 41.

Bend clamps allow production of segmented bends diameter 315, 355, 400, 450, 500, 560 & 630mm OD.

Tee clamps produce 90 degree equal tees and crosses diameter 315, 355, 400, 450, 500, 560 and 630mm OD.

Wye / branch tee clamps produce true-Y, 45 and 60 degree equal Y-branch tees 315, 355, 400, 450, 500, 560 and 630mm OD.

Hydraulic open/close and locking of main bend clamps. Optional for Tee clamps. Basic model is available without this feature.

German hydraulic seals.

Immediately accepts optional data logger.

400 volt 3 phase 50 Hz (32.7 kw 52.6 A). Optional 60 Hz also available.

Genuine 12 month international warranty.

Total cylinder area 19.63cm²

Please note technical specifications of Worldpoly machines may change without notice



PolyWorkshop800

Hydraulically operated workshop machine for the butt-welding of pipes and fittings in PE, PP and other thermoplastic materials. Pivoting clamps allow for the fabrication of segmented bends of different radii. Included as standard with this machine are all clamps required for the production of bends from 500mm to 800mm OD. Optional clamps allow production of 90 degree equal tees and crosses 500mm to 800mm, and 45 and 60 degree branch tees 500mm to 800mm. Immediately accepts optional data logger. CNC control of welding cycle is available as an option.



TECHNICAL SPECIFICATIONS

CE approved by SGS www.sgs.com

Welding range 500 to 800 mm SDR 11 to DR 41.

Bend clamps allow production of segmented bends diameter 500, 560, 630, 710 and 800mm OD.

Tee clamps produce 90 degree equal tees and crosses 500, 560, 630, 710 and 800mm OD.

Wye / branch tee clamps produce true-Y, 45 and 60 degree equal Y-branch tees 500, 560, 630, 710 and 800mm OD.

Immediately accepts optional data logger.

German hydraulic seals.

400 volt 3 phase 50 Hz (50.9 kw 79 A). Optional 60 Hz also available.

Genuine 12 month international warranty

Total cylinder area: 31.17cm²

Please note technical specifications of Worldpoly machines may change without notice



PolyWorkshop800/355

Hydraulically operated workshop machine for the butt-welding of pipes and fittings in PE, PP and other thermoplastic materials. Pivoting clamps allow for the fabrication of segmented bends of different radii. Optional clamps allow the production of bends from 355 to 800mm OD, 355 to 800mm 90 degree equal tees and crosses, and 45 and 60 degree branch tees 355mm to 800mm. Includes pressure transducer and wiring ready to immediately accept optional data logger. CNC control is available as an option.

TECHNICAL SPECIFICATIONS

Genuine 12 month international warranty.

Welding range 355 to 800mm: SDR 9 (PN20) to SDR 41 (PN4).

Bend clamps produce segmented bends range 355, 400, 450, 500, 560, 630, 710 & 800mm OD.

Tee and cross clamps produce 90 degree equal tees and crosses range 355, 400, 450, 500, 560, 630, 710 & 800mm OD.

Wye / branch tee clamps produce 45 and 60 degree branch tees range 355, 400, 450, 500, 560, 630, 710 and 800mm OD.

Immediately accepts optional data logger.

400 volt 3 phase 50 Hz (50.9 kw 79 A). Optional 60 Hz also available.

German hydraulic seals.

Total cylinder area: 31.17cm²

Please note technical specifications of Worldpoly machines may change without notice



PolyWorkshop1000

Hydraulically operated workshop machine for the butt-welding of pipes and fittings in PE, PP and other thermoplastic materials. Pivoting clamps allow for the fabrication of segmented bends of different radii. Optional clamps allow the production of bends from 500 to 1000mm OD, 500 to 1000mm 90 degree equal tees and crosses, and 45 and 60 degree branch tees 500mm to 1000mm. Includes pressure transducer and wiring ready to immediately accept optional data logger. Optional CNC control of welding operation.

TECHNICAL SPECIFICATIONS

Welding range 500 to 1000mm SDR 11 to SDR 41.

Bend clamps allow production of segmented bends in diameters 500, 560, 630, 710, 800, 900 and 1000mm OD.

Tee and cross clamps produce 90 degree equal tees and crosses in diameters 500, 560, 630, 710, 800, 900 and 1000mm OD.

Wye / branch tee clamps produce true-Y, 45 and 60 degree equal Y-branch tees 500, 560, 630, 710, 800, 900 and 1000mm OD.

Manual open-close and locking of main bend clamps.

German hydraulic seals.

Immediately accepts optional data logger.

400 volt 3 phase 50 Hz (82.7 kw 130 A). Optional 60 Hz also available.

Genuine 12 month international warranty.

Total cylinder area: 38.46cm²

Please note technical specifications of Worldpoly machines may change without notice



PolyWorkshop1200

Hydraulically operated workshop machine for the butt-welding of pipes and fittings in PE, PP and other thermoplastic materials. Pivoting clamps allow for the fabrication of segmented bends of different radii. Optional clamps allow the production of bends from 630 to 1200mm OD, 630 to 1200mm 90 degree equal tees and crosses, and 45 and 60 degree branch tees 630mm to 1200mm. Includes pressure transducer and wiring ready to immediately accept optional data logger. Optional CNC control of welding operations.

TECHNICAL SPECIFICATIONS

CE approved by SGS www.sgs.com

Welding range 630 to 1100mm SDR 11 to SDR 41, 1200mm SDR 17.

Bend clamps allow production of segmented bends in diameters 630, 710, 800, 900, 1000 and 1200mm OD.

Tee and cross clamps produce 90 degree equal tees and crosses in diameters 630, 710, 800, 900, 1000 and 1200mm OD.

Wye / branch tee clamps produce true-Y, 45 and 60 degree equal Y-branch tees 630, 710, 800, 900, 1000 and 1200mm OD.

Hydraulic open-close and locking of main bend clamps. Basic machine is available without this option if requested.

German hydraulic seals.

Immediately accepts optional data logger.

400 volt 3 phase 50 Hz (82.7 kw 130 A). Optional 60 Hz also available.

Genuine 12 month international warranty.

Total cylinder area: 38.46cm²

Please note technical specifications of Worldpoly machines may change without notice



PolyWorkshop1600

Hydraulically operated workshop machine for the butt welding of pipes and fittings in PE, PP and other thermoplastic materials. Pivoting clamps allow for the fabrication of segmented bends of different radii. Capacity (800) 900 to 1600mm OD bends, (800) 900 to 1600mm equal tees and crosses, and (800) 900 to 1200mm 45 and 60 degree equal branch tees. Includes pressure transducer and wiring ready to immediately accept optional data logger.

TECHNICAL SPECIFICATIONS

CE approved by SGS www.sgs.com

Genuine 24 month international warranty provided by Worldpoly Australia.

Welding range 900 to 1600mm (36" to 62") SDR 11 to SDR 41. Alternatively 800 to 1600mm (32" to 62") SDR 11 to SDR 41.

Bend clamps produce segmented bends in diameters (800), 900, 1000, 1200, 1400 and 1600mm / (32), 36", 40", 48", 56" and 62"

Tee and cross clamps produce 90 degree tees and crosses in diameters (800), 900, 1000, 1200, 1400 and 1600mm / (32), 36", 40", 48", 56" and 62"

Optional clamps to produce 45 and 60 degree y-branch fittings in diameters (800), 900, 1000 and 1200mm / (32), 36", 40" and 48"

Hydraulic open-close and locking of main bend clamps.

German hydraulic seals.

German hydraulic seals.

400 volt 3 phase 50 Hz (110.8 kW). Optional 60 Hz also available.

Total cylinder section 10,048 mm².

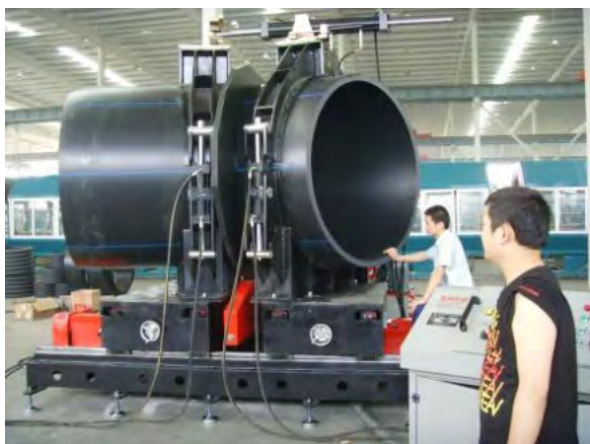
Weight: Welding table base 8,034 kg, Trimmer and heating plate base 16,580 kg, Clamps for elbows 7,500 kg, Clamps for crosses 16,580 kg, Others 2,000 kg.

Please note technical specifications of Worldpoly machines may change without notice



PolyWorkshop1600/1000

Hydraulically operated workshop machine for the butt welding of pipes and fittings in PE, PP and other thermoplastic materials. Pivoting clamps allow for the fabrication of segmented bends of different radii. Capacity 1000 to 1600mm OD bends, 1000 to 1600mm equal tees and crosses, and 1000 to 1600mm 45 and 60 degree equal branch tees. Includes pressure transducer and wiring ready to immediately accept optional data logger.



TECHNICAL SPECIFICATIONS

Welding Range: 1600mm - 1000mm SDR41 - SDR17, 1200 - 1000mm SDR 11 - SDR 41, for all diameters of elbow, tee, cross clamps and Y clamps

Elbow clamps permit production of segmented bends diameter 1600, 1400, 1200 and 1000mm OD

Tee and cross clamps allow production of equal tees and crosses diameter 1600, 1400, 1200 and 1000mm OD

Y-branch clamps produce 45 and 60 degree equal branch tees and true-wyes diameter 1600, 1400, 1200 and 1000mm OD.

Hydraulic open-close and locking of main bend clamps, and one side of tee and branch-tee clamps.

German hydraulic seals.

Immediately accepts optional data logger.

Specifications are subject to change without notice. Please confirm with Worldpoly prior to order confirmation.



PolyWorkshop2000/1200

Hydraulically operated workshop machine for the butt welding of pipes and fittings in PE, PP and other thermoplastic materials. Pivoting clamps allow for the fabrication of segmented bends of different radii. Capacity 1200 to 2000mm OD bends, 1200 to 2000mm equal tees and crosses, and 1200 to 2000mm 45 and 60 degree equal wye-branch tees. Includes pressure transducer and wiring ready to immediately accept optional data logger.



TECHNICAL SPECIFICATIONS

Welding Range: 2000mm - 1200mm. 2000 & 1800mm maximum SDR 17. 1600, 1400 & 1200mm maximum SDR 13.6 for all diameters of elbow, tee, cross clamps and Y clamps

Genuine 24 month international warranty provided by Worldpoly Australia

Produces bends 2000, 1800, 1600, 1400 & 1200mm OD

Produced equal tees 2000, 1800, 1600, 1400 & 1200mm OD

Produces equal crosses 2000, 1800, 1600, 1400 & 1200mm OD

When optional clamps are selected, produces 45 and 60 degree Wye-branch tees 2000, 1800, 1600, 1400 & 1200mm OD

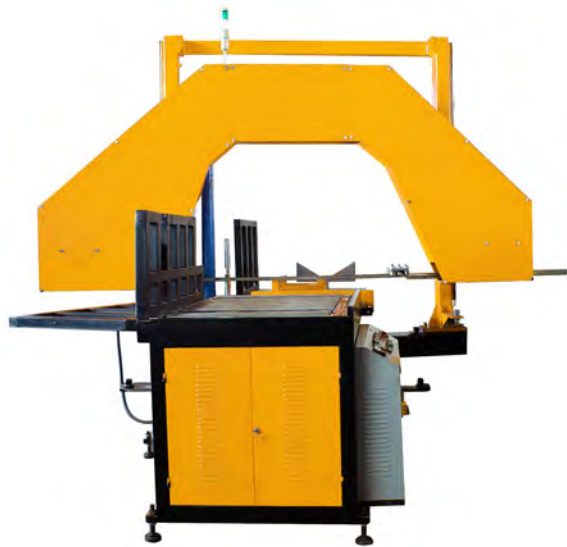
Hydraulic open-close and locking of main bend clamps.

German hydraulic seals.

German hydraulic seals.

400 volt 3 phase 50 Hz . Optional 60 Hz also available.

Please note technical specifications of Worldpoly machines may change without notice



PolySaw315

Hydraulically operated pipe saw specifically produced for the preparation of pipe segments in PE, PP and other thermoplastic materials, used for the production of bends, tees and other fabrications. Capacity 90 to 315mm OD. Cutting angle is up to 67 degrees. Lowering rate of saw is hydraulically controlled, as are the strap clamps used to hold pipe segments in place. Saw blade made in Germany.



TECHNICAL SPECIFICATIONS

CE approved by SGS www.sgs.com

Cutting range 90 to 315mm OD.

67 degree maximum cutting angle allows production of segments for bends, tees and Y-branch tees.

Angular cutting error equal to or less than 1 degree.

Speed of saw blade 195 m/min.

Genuine 24 months international warranty.

400 volt 3 phase 50hz (3 kw 6.4 A)

Weight 1,900kg

Please note technical specifications of Worldpoly machines may change without notice



PolySaw630

Hydraulically operated pipe saw specifically produced for the preparation of pipe segments in PE, PP and other thermoplastic materials, used for the production of bends, tees and other fabrications. Capacity 90 to 630mm OD. Cutting angle is up to 67 degrees. Lowering rate of saw is hydraulically controlled as are the strap clamps used to hold pipe segments in place. Saw blade made in Germany.



TECHNICAL SPECIFICATIONS

CE approved by SGS www.sgs.com

Cutting range 90 to 630mm OD.

67 degree maximum cutting angle allows production of segments for bends, tees and Y-branch tees.

Angular cutting error equal to or less than 1 degree.

Speed of saw blade 195 m/min.

Genuine 12 month international warranty.

400 volt 3 phase 50 Hz (3.7 kw 8.3 A)

Weight 3,980kg

Please note technical specifications of Worldpoly machines may change without notice



PolySaw800

Hydraulically operated pipe saw specifically produced for the preparation of pipe segments in PE, PP and other thermoplastic materials, used for the production of bends, tees and other fabrications. Capacity 90 to 800mm OD. Cutting angle is up to 67 degrees. Lowering rate of saw is hydraulically controlled, as are the strap clamps used to hold pipe segments in place. Saw blade made in the Germany.

TECHNICAL SPECIFICATIONS

CE approved by SGS www.sgs.com

Genuine 12 month international warranty.

Cutting range 90 to 800mm OD.

67 degree maximum cutting angle allows production of segments for bends, tees and Y-branch tees.

Angular cutting error equal to or less than 1 degree.

Speed of saw blade 195 m/min.

400 volt 3 phase 50 Hz (3.7 kw 8.3 A)

Weight 4,500kg

Please note technical specifications of Worldpoly machines may change without notice



PolySaw1200

Hydraulically operated pipe saw specifically produced for the preparation of pipe segments in PE, PP and other thermoplastic materials, used for the production of bends, tees and other fabrications. Capacity 630 to 1200mm OD. Cutting angle is up to 67 degrees. Lowering rate of saw is hydraulically controlled, as are the top-mounted V-clamps used to hold pipe segments in place. Saw blade made in Germany.



TECHNICAL SPECIFICATIONS

CE approved by SGS www.sgs.com.

Cutting range 630 to 1200mm OD.

67 degree maximum cutting angle allows production of segments for bends, tees and Y-branch tees.

Cutting feed is hydraulically controlled.

Infrared positioning.

Special saw blade available for thick walled pipe.

Angular cutting error equal to or less than 1 degree.

Genuine 12 month international warranty.

Speed of saw blade 250 m/min.

400 volt 3 phase 50 Hz (5.5 Kw 4.2 A).

Weight 7,000kg

Please note technical specifications of Worldpoly machines may change without notice



PolySaw1600

A hydraulically operated pipe saw specifically produced for the preparation of pipe segments in PE, PP and other thermoplastic materials, used for the production of bends, tees and other fabrications. Cutting angle is up to 67 degrees. Lowering rate of saw is hydraulically controlled, as are the top-mounted V-clamps used to hold pipe segments in place. Saw blade made in Germany.

TECHNICAL SPECIFICATIONS

CE approved by SGS www.sgs.com

Cutting range 630 to 1600mm OD.

67 degree maximum cutting angle allows production of segments for bends, tees and Y-branch tees.

Cutting feed is hydraulically controlled.

Infrared positioning.

Special saw blade available for thick walled pipe.

Angular cutting error equal to or less than 1 degree.

Genuine 12 month international warranty.

Speed of saw blade 250 m/min.

400 volt 3 phase 50 Hz (5.5 kw 13.4 A)

Weight 9,000kg

Please note technical specifications of Worldpoly machines may change without notice



PolySaw1710/68

Hydraulically operated pipe saw specifically produced for the preparation of pipe segments in PE, PP and other thermoplastic materials, used for the production of bends, tees and other fabrications. Cutting angle is up to 67 degrees. Lowering rate of saw is hydraulically controlled, as are the top-mounted V-clamps used to hold pipe segments in place. Saw blade made in Germany.

TECHNICAL SPECIFICATIONS

CE approved by SGS www.sgs.com

Cutting range 20" to 68" nom. - 630 to 1710mm OD.

Angular cutting error equal to or less than 1 degree.

Speed of saw blade 250 m/min.

400 volt 3 phase 50 Hz (5.5 kw 13.4 A) alt. 220 volt 3 phase 60 Hz

Weight 9,000kg

Please note technical specifications of Worldpoly machines may change without notice



PolySaw2000/78

Hydraulically operated pipe saw specifically produced for the preparation of pipe segments in PE, PP and other thermoplastic materials, used for the production of bends, tees and other fabrications. Capacity 1200 to 2000mm / 48 to 78". Cutting angle up to 67 degrees. Lowering rate of saw is hydraulically controlled, as are the top-mounted V-clamps used to hold pipe segments in place. Saw blade made in Germany.

TECHNICAL SPECIFICATIONS

Cutting range 1200 to 2000mm OD / 48 to 78"

Capacity 2000mm & 1800mm maximum SDR 17. 1600mm, 1400mm & 1200mm maximum SDR 13.6

67 degree maximum cutting angle allows production of segments for bends, tees and Y-branch tees.

Angular cutting error equal to or less than 1 degree.

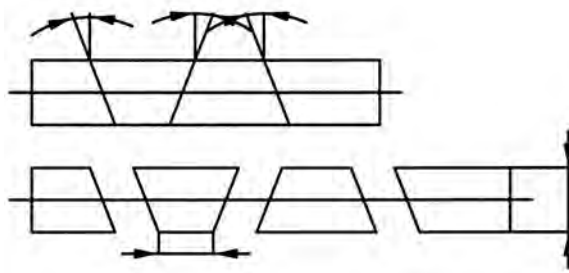
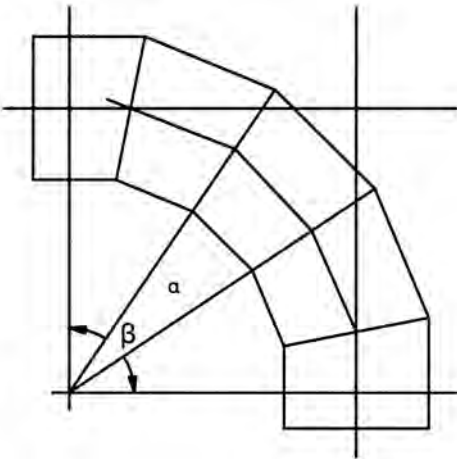
Genuine 24 month international warranty.

400 volt 3 phase 50 Hz (3.7 kw 8.3 A)

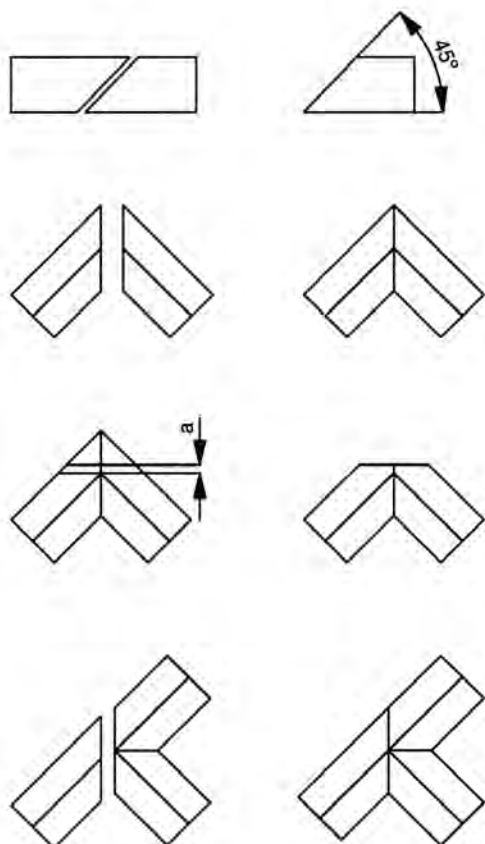
Please note technical specifications of Worldpoly machines may change without notice

FITTINGS DIAGRAMS

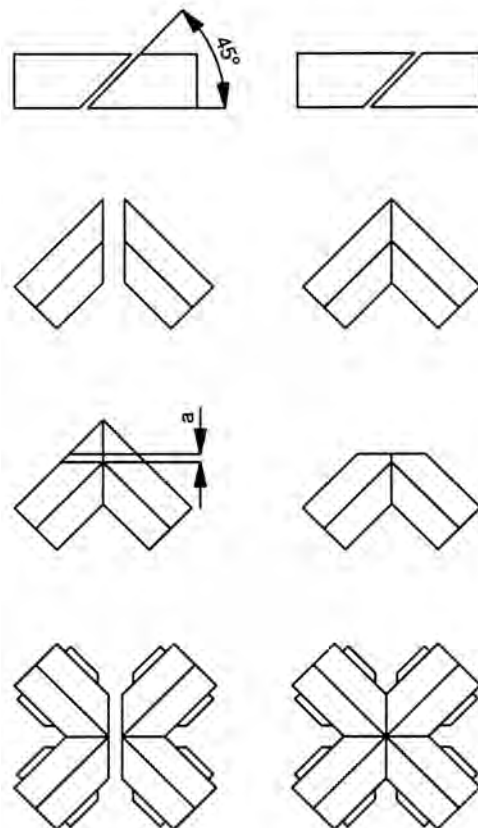
Elbow



Equal Tee

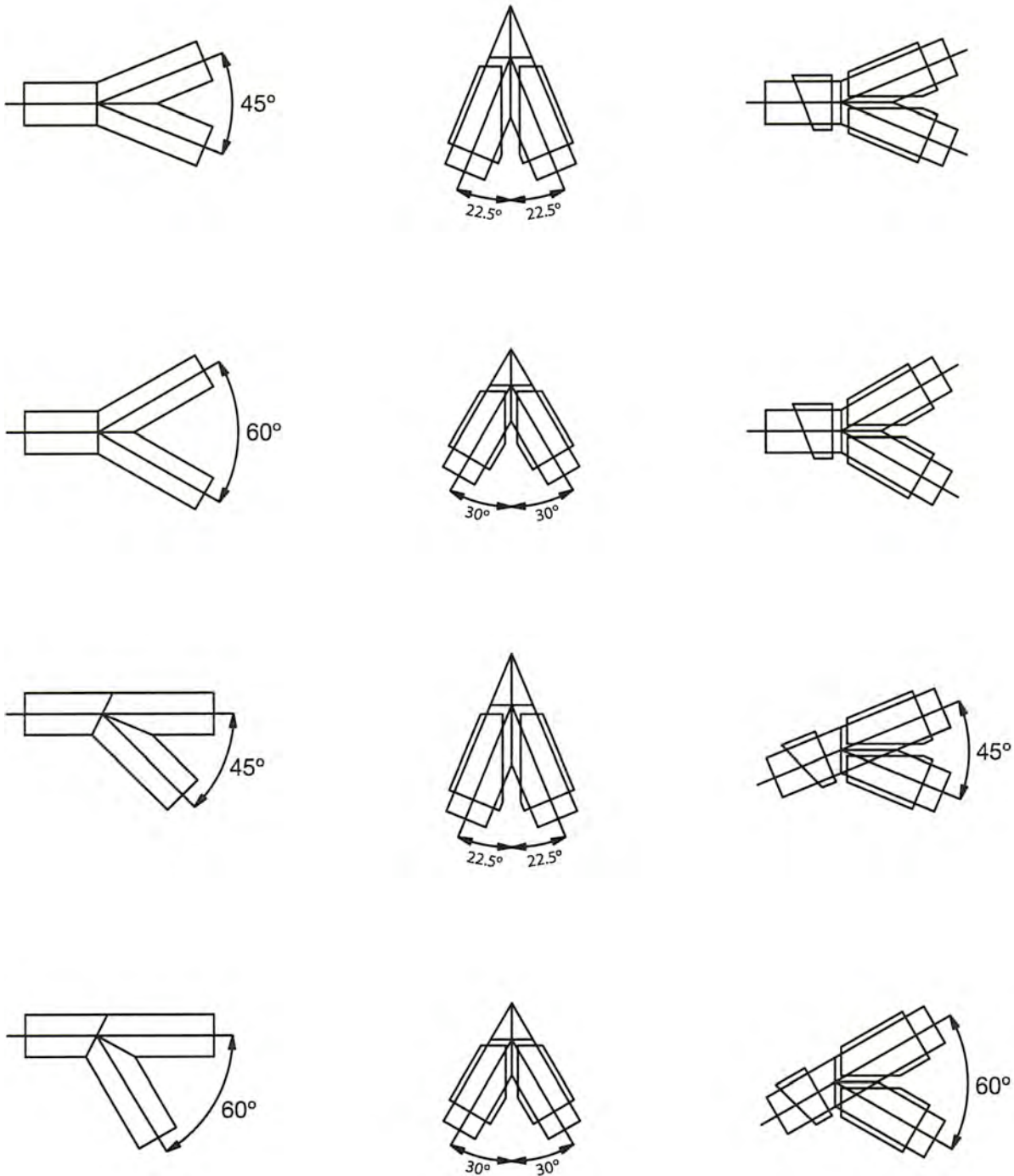


Equal Cross



FITTINGS DIAGRAMS

Equal Branch Tee and Wye





PolySaddle630/315

Hydraulically operated saddle fusion machine for the production of 90-degree reducing tees from standard PE pipe sections. Capacity 315 to 630mm OD main pipe, 63 to 315mm branch pipe. Machine is constructed to allow operation by one person, incorporating main pipe clamp, branch pipe clamps, hydraulically removed heating plate with curved elements and integrated hole saw for final removal of pipe coupon.

TECHNICAL SPECIFICATIONS

CE approved by SGS www.sgs.com

Genuine 12 month international warranty.

Main pipe range 315, 355, 400, 450, 500, 560 & 630mm.

90 degree branch pipe range 63, 90, 110, 160, 180, 200, 225, 250, 280, 315mm.

Heating saddles and hole saws required for each main / outlet combination.

Hydraulically removed heating plate with Teflon coated radius attachments.

Hydraulic loading system for main pipe.

Count-down timer for heating and cooling times (to be set by operator).

Control panel with electro-hydraulic controls.

400 volt 3 phase 50 Hz (11.3 kw 18 A). Optional 60 Hz US voltage also available.

Cylinder area: 12.56cm²

Video: http://www.youtube.com/watch?v=dOta_oucBJg



PolySaddle1200/316 (48"/12")

Hydraulically operated saddle fusion machine for the production of 90-degree reducing tees from standard PE pipe sections. Capacity 315 to 1200mm / 12" to 48" main pipe, 63 to 315mm / 2" to 12" branch pipe. Machine is constructed to allow operation by one person, incorporating main pipe clamp, branch pipe clamps, hydraulically removed heating plate with curved elements and integrated hole saw for final removal of pipe coupon.

TECHNICAL SPECIFICATIONS

CE approved by SGS www.sgs.com

Genuine 24 month international warranty.

Main pipe range 315, 355, 400, 450, 500, 560, 630, 710, 800, 900, 1000 and 1200mm / 12, 14, 16, 18, 20, 22, 24, 26, 28, 32, 36, 40 & 48".
Optionally can be supplied to weld down to 315 and 355mm OD main pipe.

90 degree branch pipe range 63, 90, 110, 160, 200, 225, 250, 315, 355, 400, 450 and 500mm / 2, 2 1/2, 3, 4, 5, 6, 8, 10, 12, 14, 16, 18 & 20",
thickness SDR11 (PN16)

Heating saddles and hole saws must be ordered for each main / outlet diameter. Can be supplied

Complete with integrated hole-saw for completion of procedure.

Hydraulically removed heating plate with PTFE coated radius attachments.

Hydraulic loading system for main pipe.

Count-down timer for heating and cooling times (to be set by operator).

Control panel with electro-hydraulic controls.

400 volt 3 phase 50 Hz (22.1kw 35 A). Optional 60 Hz US voltage also available.

Cylinder area: 12.56cm².

Max. Working Pressure: 63 bar.

Video: http://www.youtube.com/watch?v=dOta_oucBJg



PolySaddleSaw500

Purpose built bandsaw for cutting the radius required when welding reducing tees using WHM630, WHM1000 or WHM1200 saddle fusion machine, or when hand fabricating pipe manifolds. Cuts pipe segment end to the correct radius.

TECHNICAL SPECIFICATIONS

- CE approved by SGS www.sgs.com
- Radius saw is used to cut branch pipes used in production of reducing tees and manifolds.
- Cuts pipe diameters 63, 90, 110, 125, 140, 160, 200, 225, 250, 280, 315, 355, 400, 450 & 500mm.
- Also available in smaller models with capacity 400mm and 315mm at lower cost.
- Electrically operated.
- Swedish steel blade.
- Manual feeding speed.
- 400 volt 3 phase 50 Hz (2.2 kw 4.2 A) alt. 60 Hz US voltage available.

GENERAL MACHINES AND ACCESSORIES



Support equipment for polyethylene pipe and fittings fusion including electrofusion, data logging, bead removal and socket fusion.

- **ELECTROFUSION**
- **DATA LOGGERS**
- **ACCESSORIES**



ATS180

The ATS180 series welding unit has been designed especially for service pipe installation where portability is important, while still keeping reliability in mind. It has been tailored to the construction industry where downtime and problems cost money. It is built in a strong metal case, has a protective steel frame and is fitted with tough rubber cables able to put up with the harshest site conditions. It is designed to weld 40V PE pressure fittings from 16mm to 180mm diameter, fully complies with the ISO International Standard for welding equipment, and has automatic bar code operation. It has full data logging capabilities and the data can be downloaded by USB memory drive, and is manufactured in the United Kingdom.

TECHNICAL SPECIFICATIONS

Operating Modes - Manual, Barcode
Controlled Welding Voltage - 39.5V AC (8 to 48V AC)
Welding Current - 1 to 50 A
Duty Cycle at 50 amps (in a 3 hour welding perios) - 33% (200 sec on / 400 sec off)
Welding Time - 1 to 1000 seconds
Supply Voltage - 110V AC (40 to 60 Hz) / 230V AC 40 to 60 Hz)
Supply Current - 1 to 25A (110) / 1 to 12A (230)
Supply Power - (2800 VA (peak)
Weight - 10kg
Size - 30 x 20 x 26 cm



ATS250

ATS250 is a fully featured, versatile and easily operated electrofusion welding unit, ideally designed to join PE pressure electrofusion fittings from 16mm to 400mm welding at a constant voltage between 8 volts and 48 volts. European designed and manufactured with portability in mind, it has been constructed in a small lightweight metal case, making it easy to carry and use. Able to weld fittings in both manual and bar code mode, ATS250 has a data log memory of more than 2000 welds which can be downloaded using USB memory.

TECHNICAL SPECIFICATIONS

Capacity 16mm to 400mm

230 volt operation (184v to 276v) and 110 volt operation (88v to 132v) operation

40 volt welding (8v—48v)

Waterproof and dustproof to IP65

Backlit four line display

Multi-lingual intuitive menu system

Ohms, Volts, Amps meters built in

Operation configurable by supervisor

Programmable maintenance intervals

Fusion time and energy displayed

Manual entry of fusion time

Bar code entry of fusion time

Ambient temperature compensation

Bar code pen

Data logging memory (2048 welds)

Data download on USB memory pen

Software upgrade on USB memory pen

Data download PC software

Read and log Traceability bar codes

Operator welding pass lock-out

Optional mobile email and SMS text. Optional GPS location coordinate logging. Both additional cost.

Sturdy transportation box

Specifications are subject to change without notice. Please confirm at time of order.



ACT3

This is an automatic electrofusion welding unit designed to join PE and PP pressure fittings from 16mm to 630mm that weld at a constant voltage between 8 volts and 48 volts. It has been designed for the rental market where its rugged design reduces downtime and saves money. It can weld fittings in manual mode, Fusamatic mode and bar code automatic mode and has a data log memory of more than 2000 welds that can be downloaded using USB memory.

TECHNICAL SPECIFICATIONS

Approvals UK: - GIS ECE1
Operating modes - Manual
Controlled welding voltage - 39.5 V (8 V to 48 V)
Welding current - 1 to 65A (100A peak)
Welding time - 1 to 3600 seconds
Supply voltage - 110V or 230V (40-60Hz)
Supply current - 1-28A (110V) 1-14A (230V)
Supply power - 3500 W
Weight - 28 kg
Size - 38 x 38 x 40 cm
Operating temperature - 15C to +50C
Programmable Maintenance - Yes
Waterproof & Dustproof to IP65 - Yes
Backlit four line display - Yes
Alphanumeric keypad - Yes
Multi-lingual intuitive menu - Yes
Configurable operation - Yes
Ohms, Volts, Amps meters built in - Yes
Fusion time and energy displayed - Yes
Manual entry of fusion time - Yes
Bar code entry of fusion time - Yes
Temperature compensation - Yes
Bar code pen - Optional
Bar code scanner - Yes
Data log memory (2048 welds) - Yes
Data download to USB memory - Yes
Software upgrade from USB memory - Yes
Data download PC software - Yes
Read traceability codes - Yes
Operator welding pass - Yes

Wireless email and SMS text - Optional

GPS location logging - Optional

Mobile phone App compatible - Yes

Technical details are subject to change without notice



ATS High Power

This is a high-power electrofusion welding unit designed to join PE and PP pressure fittings from 16mm to 1200mm that weld at a constant voltage between 8 volts and 48 volts. It has been designed with reliability in mind and has been constructed with heavy duty electronics with forced air cooling to allow multiple fittings to be welded in quick succession. It can weld fittings in manual mode and bar code mode, and has a data log memory of more than 2000 welds that can be downloaded using USB memory.



TECHNICAL SPECIFICATIONS

Please take note of acceptable voltages in comparison to the fittings being welded

Approvals - ISO 12176-2

Operating modes - Manual, Bar code

Controlled welding voltage - 39.5 V (8 V to 48 V)

Welding current - 1 to 120A

Welding time - 1 to 3600 seconds

Supply voltage - 110V or 230V (40-60Hz)

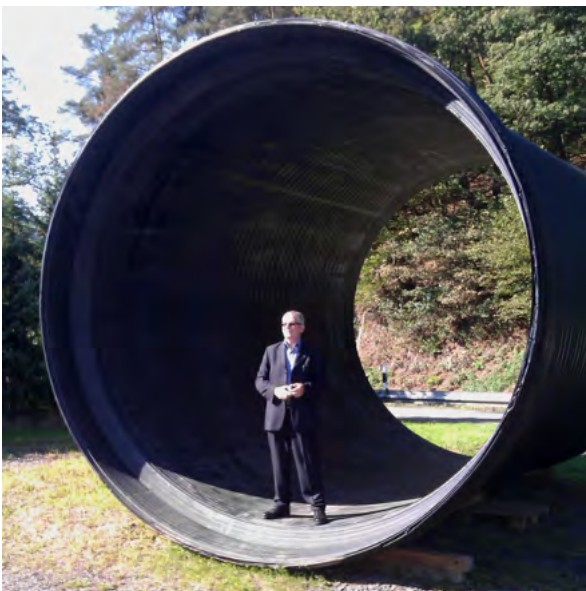
Supply current - 1-63A (110V) 1-32A (230V)

Supply power - 7400 W

Weight - 42 kg

Size - 50 x 43 x 24 cm

Operating temperature - 15C to +50C
Programmable maintenance - Yes
Waterproof / Dustproof to IP65 - Yes
Backlit four line display - Yes
Alphanumeric keypad - Yes
Multi-lingual intuitive menu - Yes
Configurable operation - Yes
Ohms, Volts, Amps meters built in - Yes
Fusion time and energy displayed - Yes
Manual entry of fusion time - Yes
Bar code entry of fusion time - Yes
Temperature compensation - Yes
Bar code pen - Optional
Bar code scanner - Yes
Data log memory (2048 welds) - Yes
Data download to USB memory - Yes
Software upgrade from USB memory - Yes
Data download PC software - Yes
Read traceability codes - Yes
Operator welding pass - Yes
Wireless email and SMS text - Optional
GPS location logging - Optional
Mobile phone App compatible - Yes
Technical details are subject to change without notice



PE Stormwater Welder 4000

The ATS High Power welding unit has been designed specifically to weld large diameter fittings, those above 630mm. These fittings have long weld times and high welding currents, so the unit has heavy-duty electronics, easily capable of these demanding conditions. The unit is built in a strong metal case with forced-air cooling to allow multiple fittings to be welded in quick succession. The unit has full data logging capabilities and can weld in manual or automatic bar code operation. It has a unique “fast weld” mode, allowing bifilar fittings to be welded concurrently, halving the installation time. This is a high-power electrofusion welding unit designed to join PE Storm Water pipes from 500mm to 4000mm that are manufactured by Krah and Polypipe Ridgistorm-XL. It has been designed with reliability in mind and has been constructed with heavy duty electronics with forced air cooling to allow multiple pipes to be welded in quick succession. For larger diameter pipes, two, three or four machines can be used simultaneously without causing interference. It can weld in manual mode and bar code mode, and has a data log memory of more than 2000 welds that can be downloaded using USB memory.

TECHNICAL SPECIFICATIONS

- Approvals - ISO 12176-2
- Operating Modes - Manual, Bar code
- Controlled Welding Voltage - 39.5 V (8 V to 48 V)
- Welding Current - 1 to 120 A
- Supply voltage - 110V or 230V (40-60Hz)
- Supply current - 1-63A (110V) 1-32A (230V)
- Supply power - 7400 W
- Weight - 42 kg
- Size - 50 x 43 x 24 cm
- Operating temperature - 15C to +50C
- Programmable maintenance

Waterproof / Dustproof to IP65
Backlit four line display
Alphanumeric keypad
Multi-lingual intuitive menu
Configurable operation
Ohms, Volts, Amps meters built in
Fusion time and energy displayed
Manual entry of fusion time option
Bar code entry of fusion time
Bar code pen - optional
Bar code scanner
Temperature compensation
Data log memory (2048 welds)
Data download to USB memory
Software upgrade from USB memory
Data download PC software
Read traceability codes
Operator welding pass
Wireless Email and SMS Text - optional
GPS Location Logging - optional
Mobile phone App compatible
Technical details are subject to change without notice



Powerscrape 175

Powerscrape 175 is a specifically created machine for scraping large diameter HDPE pipes according to the requirements for electrofusion fittings, and helps you to save time and effort on the job-site. It is clamped onto the pipe wall and moves automatically around the pipe's circumference. Pipe ovality does not affect the depth of cut. It is further equipped with a connection for industrial vacuum cleaners. The flexible construction enables a scraping length of up to 350 mm, which is ideal for STAR and other electrofusion fittings d 355 - d 1200 mm.

TECHNICAL SPECIFICATIONS

Scraping width - 175 / 350mm

Scraping depth - 0.2 (red) / 0.4 (yellow) / 0.6mm (blue)

Scraping speed - 0.8m/min

Weight - 16kg

Power scraping motor - 1600W

Power driving motor - 150W

Input power - 230V /



UniPrep Scraper

For the reliable removal of the oxide layer of HDPE and PE-Xa pipes. UniPrep scrapers are robust tools and can be used for preparing pipe ends prior to electrofusion on pipe sizes 90-500mm.

TECHNICAL SPECIFICATIONS

Scraper tool set for pipes OD 20 - 225mm

Features:

Maintains mechanical scraping across the whole joint area

Faster scraping action

Hardened blade

Controlled depth of cut



Multi Clamp Basic

The new Multi-Clamp kit has been specifically re-designed for easier alignment and restraint of electrofusion fittings as a result of customers' requests for a lighter, more flexible multiclamp to suit narrow trenching techniques.

TECHNICAL SPECIFICATIONS

Promotes full rerounding and restraint during electrofusion

Top clamp is removable via a hinge pin to allow use in narrow trenches

The new dovetail assembly allows complete rotation through 360° to suit any pipe and fittings configuration (large diameter tees require extra base, ring and liners)

Extruded lightweight base



SPG 2.0 Data Logger

The SPG 2.0 data logger is made for easy and safe welding process control, and report generation pursuant to ISO 12176 standard. 10,000+ welds are recorded, with output to USB and printing to Excel. It's control software ships ex-works with configurations for many third-party systems already installed. Therefore, the logger constitutes an upgrade for manually operated welding machines to achieve ISO-compliant recording, error handling, and welding process control. At every step in the welding process, the SPG 2.0 indicates the nominal and the actual values of the welding pressures and times, to walk the welder operating the hydraulic unit easily and correctly through the process. The unit thereby achieves the optimum welding process, in line with nationally applicable standards, as affecting both heating element temperatures and welding pressures and times.

TECHNICAL SPECIFICATIONS

Automatic data logging of 10,000 weld reports



Debader 90mm - 450mm

Manual bead removing equipment for internal beads from 90mm to 630 mm. Internal debader for removing the weld bead in PE and PP plastic pipe. After adjusting the internal debader to the appropriate size, insert it into the pipe until you feel a "bump", then turn the handle clockwise 360 degrees and pull it out along with the bead. Note that debading must be completed within the first 1/3 of the weld cooling time.

TECHNICAL SPECIFICATIONS

Used to remove internal weld bead, following butt welding operation.

Options include:

Aluminium rods (6 pc) 2m, and (1 pc) 1m. Total 13 m. (1 pc) Stainless Drive handle, (1 pc) universal joint and set of joints. Set of Quick-locks.

90 to 110 mm. cutter head and 6+6 supports (ID 70 to 105 mm)

125 to 160 mm. cutter head and 6+6 supports (ID 105 to 145 mm)

160 to 200 mm. cutter head and 6+6+6 supports (ID 135 to 190 mm)

225 to 280 mm. cutter head + 6 supports adjustable (ID 181 to 266 mm)

315 to 450 mm. cutter head + 6 supports adjustable (ID 265 to 420 mm)

Made in Denmark

Please note technical specifications of Worldpoly machines may change without notice



Debeader 500mm - 630mm

Manual bead removing equipment for internal beads from 500mm to 630 mm. Internal debeader for removing the weld bead in PE and PP plastic pipe. After adjusting the internal debeader to the appropriate size, insert it into the pipe until you feel a "bump", then turn the handle clockwise 360 degrees and pull it out along with the bead. Note that debeading must be completed within the first 1/3 of the weld cooling time.

TECHNICAL SPECIFICATIONS

Used to remove internal weld bead, following butt welding

Options available:

500 to 630 mm. cutter head and 3 supports + 1 pipe-end support

500 to 630 mm. cutter head (ex support)

500 to 630 mm. Internal Debeader Blade

Rod 3 m. + joint (Rods can be assembled to debead pipe up to 25m in length)

Above 630mm on request

Made in Denmark

Please note technical specifications of Worldpoly machines may change without notice



PolySling500

Australian made 4 roller sling suitable from 100 to 500mm OD PE pipe. All slings are supplied tested and tagged with a safe working load. PolySling500 has a wire capacity of 3000 kg.

TECHNICAL SPECIFICATIONS

Australian made

Suitable for 100 to 500mm PE pipe

Wire capacity of 3000kg

Specifications are subject to change without notice. Please confirm at time of order.



PolySling1000

Australian made 5 roller sling suitable from 315 to 1000mm OD PE pipe. All slings are supplied tested and tagged with a safe working load. PolySling has a wire capacity of 3000 kg.



TECHNICAL SPECIFICATIONS

Australian made

Suitable for 315 to 1000mm PE pipe

Wire capacity of 3000kg

Specifications are subject to change without notice. Please confirm at time of order.



PolyRoller450

Australian made adjustable pipe roller stands, capacity 40 to 450mm OD PE pipe. Height adjustment is based on a chain fixed to the bottom of each arm. Safe working load 500kg per stand.

TECHNICAL SPECIFICATIONS

Australian made

Minimum order quantity 4 stands

Capacity 40 to 450mm

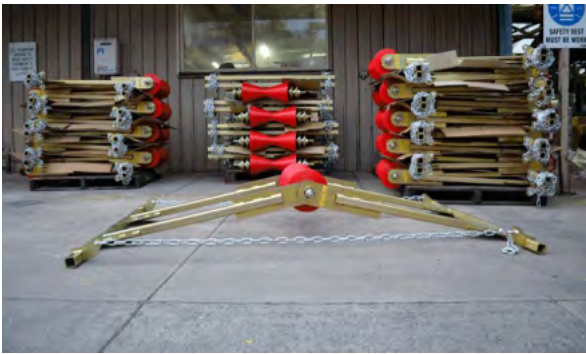
Safe working load 500kg per stand

Specifications are subject to change without notice. Please confirm at time of order.



PolyRoller1000

Australian made adjustable pipe roller stands, capacity 50 to 1000mm OD PE pipe. Height adjustment is based on a chain fixed to the bottom of each arm, and height can be adjusted from 200mm to 1000mm off the ground. Safe working load 1000kg per stand.



TECHNICAL SPECIFICATIONS

Australian made

Minimum order quantity 4 stands

Capacity 50 to 1000mm

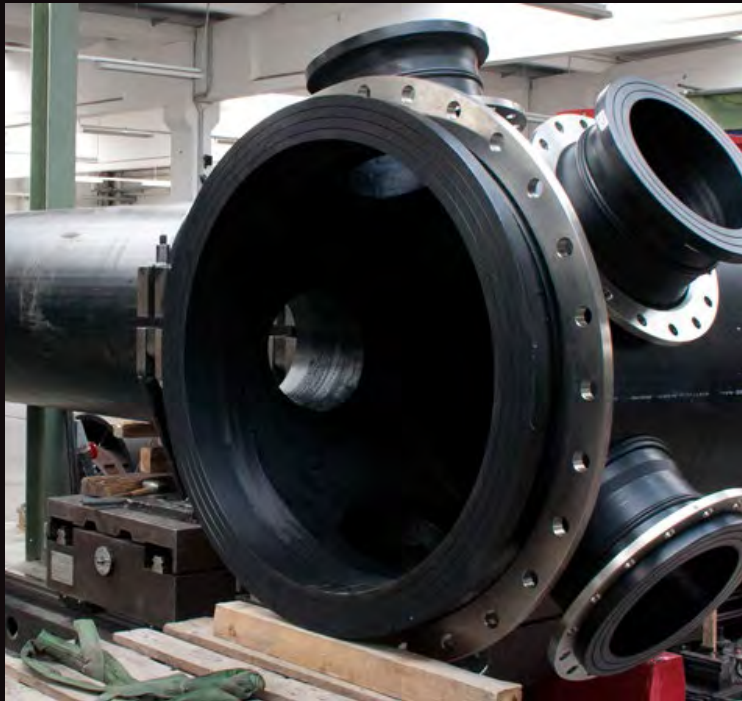
Safe working load 1000kg per stand

Weight 25kg per stand, including chain

Specifications are subject to change without notice. Please confirm at time of order.




**AUSTRALIAN
ENGINEERED
FOR A TOUGH
WORLD**

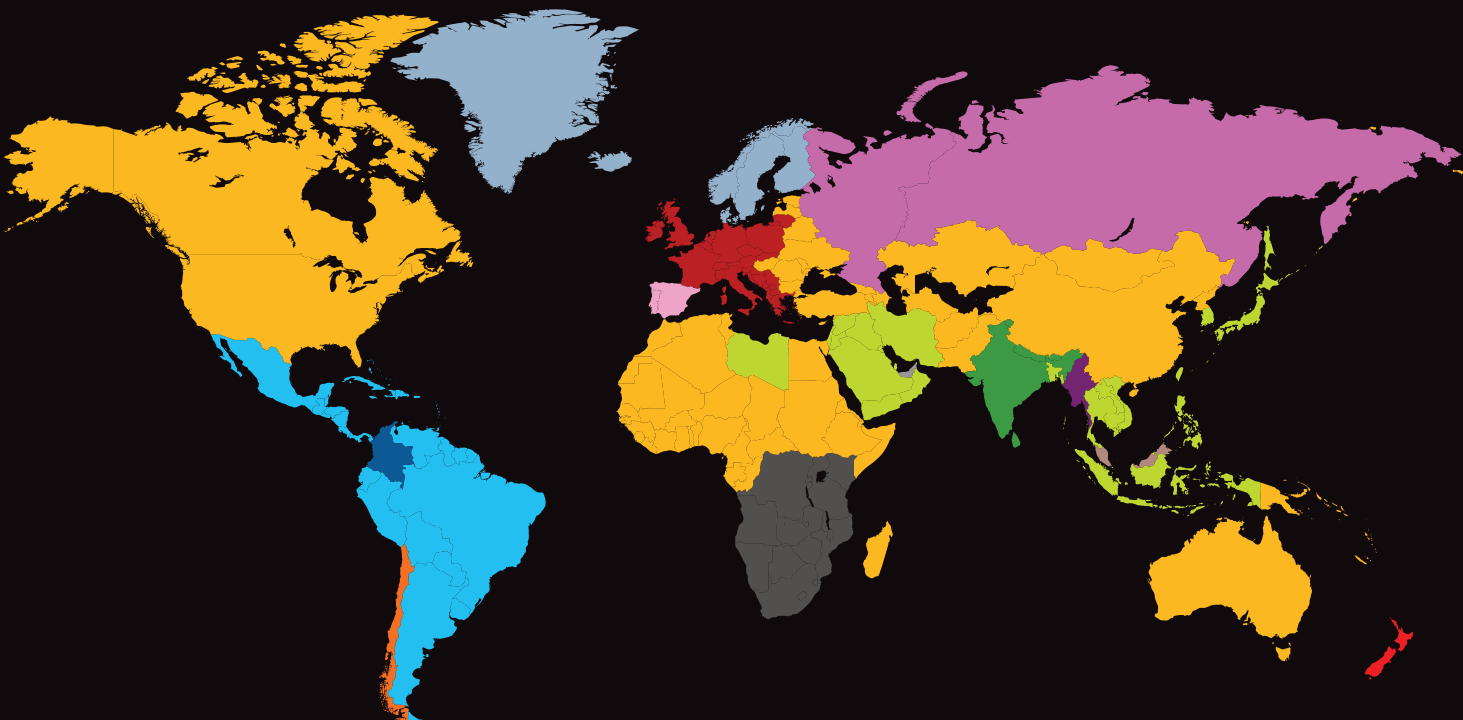


**FROM THE MINES IN
THE DESERTS OF SOUTH
AMERICA, FISH FARMS
IN MALAYSIA TO FREEZE
RESISTANT WELDS IN
ANTARCTICA, WORLDPOLY
HAS DONE IT ALL**



WORLDPOLY DEALER REGIONS

To find a dealer most appropriate for you,
match the region colour with the contact details below.



Australia (Head Office)

☎ +61 (0)3 8795 3888
✉ sales@worldpoly.com
💻 www.worldpoly.com
🏠 2/5 Commercial Drive,
Lynbrook VIC 3975
Australia



Asia and Middle East

☎ +49 2 81 98 414 0
✉ asiame@worldpoly.com
💻 www.worldpoly.com



Chile

☎ +56 2 738 7340
☎ +56 2 738 7341
✉ ventas@termopro.cl
💻 www.termopro.cl



Colombia

☎ +57 4 3528585
✉ info@tecnopipe.com
💻 www.tecnopipe.com



Germany

☎ +49 2 81 98 414 0
✉ info@star-kunststoffe.de
💻 www.star-kunststoffe.de



India

☎ +91 22 6681 9999
✉ info@geminiindia.com
💻 www.geminiindia.com



Latin America

☎ +56 2 738 7340
☎ +56 2 738 7341
✉ ventas@worldpoly.com
💻 www.worldpoly.com



Malaysia

☎ +603 5569 1640
✉ sales@weldasys.com
💻 www.weldasys.com



Myanmar

☎ +95 1 655690
☎ +95 1 651756
✉ sales@worldpoly.com
💻 www.worldpoly.com



New Zealand

☎ +64 4 238 4452
☎ +64 4 238 6170
✉ jeremy@upg.net.nz
💻 www.upg.net.nz



Russia

☎ +7 495 9895639
✉ sales@worldpoly.ru
💻 www.worldpoly.ru



Scandinavia

☎ +47 71173466
✉ pmksalg@pnmtec.info
💻 www.pmktec.info



Spain and Portugal

☎ +34 91 692 71 60
✉ info@querotools.com
💻 www.quero-sa.es



Sub-Saharan Africa

☎ DBN: +27 31 539 7451
☎ JHB: +27 82 828 2312
✉ shawn.pretorius@stp-sa.com
💻 www.stp-sa.com

