



SafetyLink®

*Innovative
Fall Protection*



***World leaders in patented height
safety design and innovation.***



www.safetylink.com



SafetyLink®
Innovative
Fall Protection

Products

TileLink™

**AWARD
WINNING
DESIGN**

'ABC1 The New
Inventors'



Tiled Roof Anchor

- Energy absorbing.
- Multi directional 316 stainless steel.
- No need to cut sarking, eliminating waterproofing issues.
- Fixes to rafter with five roofing screws.
- Fits snugly between the existing tiles.
- Fast installation, rated as one person anchor.

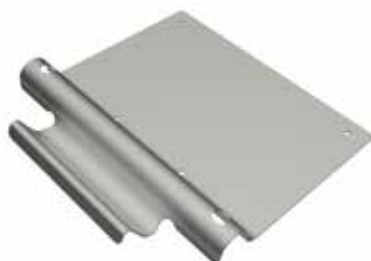


Fixed LadderLink™



Ladder Stabiliser

- Made from marine grade aluminium.
- Quick and easy installation.
- Essential entry point system to stabilise your ladder.



TempLink 3000™



Temporary Roof Anchor

- Patented multi-directional fall device.
- 316 stainless steel.
- Lightweight compact unit.
- Easy to secure tabs.
- Single person.
- Rated at 15kN.



FrogLink®



Metal Roof Anchor

- Energy absorbing.
- Multi directional 316 stainless steel, surface mounted anchor.
- One single row of attachment holes.
- Secured with seven Gesipa Bulbtite Rivets.
- Fast installation, rated as a one person anchor.



Classic



Horizontal Lifeline

- Patented design.
- Solid 316 stainless steel components.
- Quick connect shuttle.
- Smooth transition over intermediates.
- Forged tapered design enabling energy absorption.



FrogLine Shuttle



Horizontal Lifeline

- Flawless functionality with a durable solid stainless steel construction.
- Intended for use with 8mm stainless steel cables.
- For use on SafetyLinks FrogLine Lifeline.



FrogLine™



Horizontal Lifeline

- Patented low profile design.
- Fast simplified installation.
- Advanced shock absorbing serpentine.
- Innovative built in fall indicators.
- Solid 316 stainless steel components.
- Quick connect shuttle.
- Smooth transition over intermediates.

FrogLine™ SurfaceLink



FrogLine™ ConcreteLink



FrogLine™ RetroLink with extender



ConcreteLink™



Concrete Anchor

- 316 stainless steel.
- Multi-directional fall protection.
- Single person anchor, rated at 15kN.
- Must be chemically fastened.
- Fall arrest and rope access anchor.
- Energy absorbing eyebolt, which reduces the force on the person and the structure.

RetroLink™



Retro Anchor

- Easy installation into concealed areas.
- Fits to steel columns, purlins and beams, no access is required.
- Versatile unit accommodating any 16mm threaded component.



SafetyLink Pty Ltd **1300 789 545**
+61 2 4964 1068 info@safetylink.com

**'Innovative
Fall Protection'**

For further information and to order our products visit our website.

www.safetylink.com



SafetyLink®

*Innovative
Fall Protection*

'Innovative Fall Protection'

SafetyLink is an innovative anchor company achieving success and keeping you safe whilst working at heights.

ROOF ANCHORS

LIFELINE SYSTEMS

PERMANENT LADDERS

LADDER STABILISERS

SafetyLink's dedicated design team have been working vigorously over the past decade, creating a multitude of new products to suit any working at heights scenario.

SafetyLink supply all height safety equipment to all industries - buildings, commercial and industrial sites. From a series of anchor points to a complete network of systems for maintenance, cleaning access and inspections, SafetyLink has you covered.

All SafetyLink products undergo extensive testing in a multitude of scenarios by accredited testing facilities and comply to Australian and New Zealand standards.

SafetyLink's experienced technical team is complemented with comprehensive installation manuals and testing certificates. We have national qualified installers keeping your assets safe.

Benefits of choosing SafetyLink:

SafetyLink's roof anchor point designs incorporate the same stand out feature of all our roof anchors maximising energy absorption. This dynamic design reduces the load back onto the structure and the person attached to the roof anchor.

A fall is never an anticipated event when working at heights, therefore the direction of your fall cannot be accurately predicted. All SafetyLink roof anchors are designed and tested as multi-directional.



Outdoor Recreation



Adventure Harness *Full Body Safety Harness*

The SafetyLink Adventure Harness has been specifically designed for the Outdoor Recreation Industry. The harness has a large high set solid front waist attachment point suitable for activities such as abseiling, giant swing and high ropes course.

Recreational *Outdoor Hardware*

SafetyLink is proud to introduce its new range of recreational hardware suitable for commercial use in the recreational industry. All products are designed for high duty cycles and long service life with stainless steel construction and precision high speed bearings.

SafetyLink will provide you with the following:

- All products tested and manufactured to Australian and New Zealand Standards.
- All distributors and installers are trained to use SafetyLink products.
- Supply installation guides, testing results and product sheets.
- Use a qualified and reputable testing authority.
- Supply a large range of roof anchors that protect you from the ground up, allowing complete access to your roof.
- Installers are qualified to do yearly inspections on your anchors as per Australian and New Zealand Standards.



SafetyLink Pty Ltd **1300 789 545**
+61 2 4964 1068 info@safetylink.com

**'Innovative
Fall Protection'**

For further information and to order our products visit our website.

www.safetylink.com