

FireMaster® Concertina™

multisided fire curtain for protecting voids without side guides



revision 3.0 november 2019

delivering engineered solutions

FireMaster® Concertina™

multisided fire curtain for protecting voids without side guides

FireMaster® Concertina™ is a fire curtain that protects without the need for corner posts giving architects, consultants and specifiers a whole new way to approach buildings design. The FireMaster® Concertina™ offers up to 4 hour fire integrity using our revolutionary, tested folding system which can form almost any shape.

Fire Rating	Max Width	Max Height
- / 240 / -	unlimited	6 metres

operation

FireMaster® Concertina™ will remain retracted within its head box until it is automatically activated by the fire alarm signal. Once activated it will completely close the opening, creating a fire and smoke compartment. Deployment is by gravity at a controlled speed of 0.06 - 0.1m/s. The only true gravity failsafe product on the market.

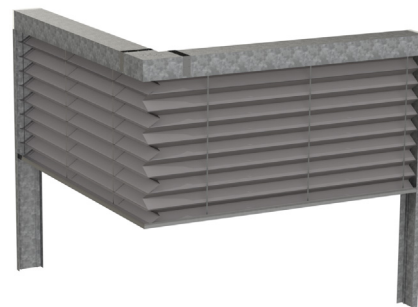
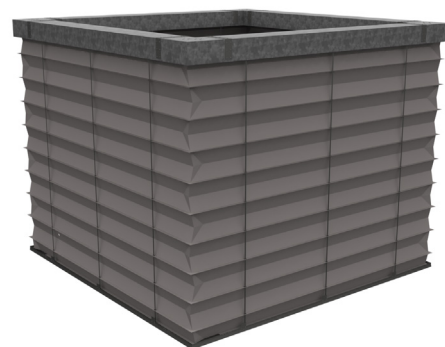
Testing is performed by a simple key switch. It is reset manually by pressing a reset button on the control panel. Automatic reset is available.

fire curtain construction

Concertina™ is a folding fabric fire curtain where the complete construction is concealed in the headbox in the ceiling. The headbox traverses the perimeter of the void in a uniform design.

The fabric is constructed in strips forming a pleated design. These are stitched together horizontally. The material keeps the memory of the folds as manufactured. Each corner is specifically cut, folded and constructed to create any angle from 60° to 180°. As the bottom tray deploys, these pleats unfold. During retraction of the curtain the pleats will neatly fold back to their stored position.

unlimited design potential

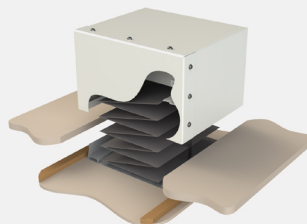


fire curtain concealment

Standard bottom tray is 300mm wide and provides complete access into the headbox when deployed. A slim line version is available with a 170mm wide bottom tray.



flush fit



suspended ceiling with SLAT
(self levelling access trim) for

FireMaster® Concertina™

multisided fire curtain for protecting voids without side guides

fire rating

Full scale and full assembly fire testing to AS1530.4 providing fire integrity of 4 hours. Testing also includes motor testing and proving 12 operating cycles across 30 minutes fire exposure.

No need to fire protect the headbox or side guides as the complete product is fire rated. Assessment report EXOVA

Incident Irradiance (kW/m²)

Time (min)	I ₀ - 0mm	I ₁₀₀₀ - 1000mm
0	0.00	0.00
20	8.40	5.80
40	11.90	8.40
60	15.20	10.50
120	21.70	15.00

material finish

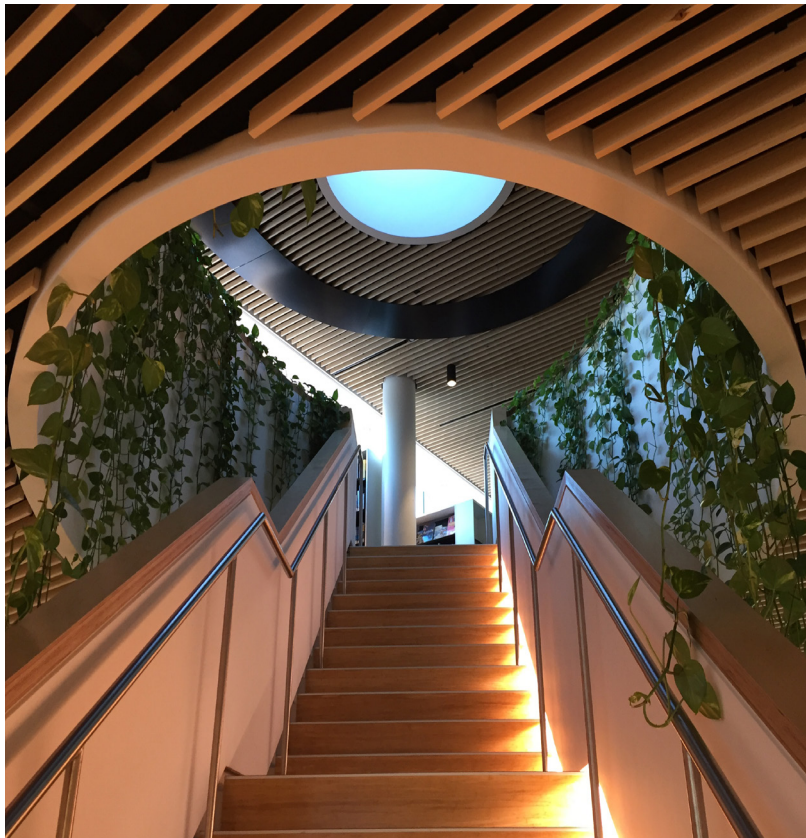
Metalwork is zinc coated mild steel. This can be painted on site or powder coated to DULUX or RAL colours.

side guides (open shapes only)

Concertina™ doesn't need to completely surround the perimeter of a void or connect back to itself. It can connect into a fire wall with side guides.

smoke rating

FireMaster Concertina is assessed to AS1530.7 (2007). Standard Reference Conditions (STP) @ 200°C and 25Pa. with a leakage rate of 3.1m³/m²/hr.



Benefits

- Does not require any visible support posts at the corners.
- Tested to AS1530.4.
- Have unlimited spans and drops of 6m with a small lightweight housing.
- Can be installed as a polygon, triangle, 'L' shaped right angles, curves, 'Z' shapes or even in a complete circle. Almost any other shape you may desire.
- Allows for Large open spaces and to compartmentalise interconnecting stair cases.
- Total Gravity Fail Safe.





delivering engineered solutions



Melbourne

Greene Fire Pty Limited
123 Woodlands Drive
Woodlands Industrial Estate
Braeside, VIC, 3195
P (03) 8526 1990
www.greenefire.com.au
ABN: 50 122 435 081

unit 12



delivering engineered solutions

Sydney

Greene Fire Pty Limited
Unit 2, 7-11 Parraweena Road
Taren Point, NSW, 2229
P (02) 9526 3100
www.greenefire.com.au
ABN: 50 122 435 081



INNI V A T E

