

# 2021 **SAFETYLINK** CATALOGUE

**LADDERS  
GUARDRAIL  
WALKWAY**



**SafetyLink®**

*Innovative  
Fall Protection*

# Contents



<b>WARNINGS</b>	<b>4</b>
<b>MAINTENANCE</b>	<b>4</b>
<b>LADDER TECHNICAL</b>	<b>5</b>
<b>LADDERS</b>	
Ladder Foot	6
Ladder Section Splice Joints	6
Ladder Sections	7
Ladder Entry Inspection Sign	8
Ladder Caps	9
Ladder Base Support Angles	9
Ladder Stiffeners	9
Ladder Brackets	11
Ladder Platform Parapet Handrails	12
Ladder Handrails	13
Ladder Retractable Stiles	13
Ladder Platforms	14
Ladder Cage	20
Ladder Door	22
Ladder Gates	23
<b>GUARDRAIL &amp; WALKWAY</b>	
Hatch Guardrail	25
Ladder Support Docks	26
Ladder Grabrails	26
Guardrail - Folding Concrete Base Mount	27
Guardrail - Folding Surface Mount	28
Guardrail - Surface Mount	29
Guardrail - Concrete Base Mount	30
Guardrail - Concrete Side Mount	31
Walkway - No Guardrail	32
Walkway - Single Guardrail	34
Walkway - Double Guardrail	36
Skylight Mesh Protection	38
Walkway & Guardrail Spare Parts for Kits	40
<b>LADDER KITS</b>	
75° Ladder - Top Platform	44
75° Ladder - Parapet Platform	45
75° Ladder - Top Platform with Cage	46
75° Ladder - Parapet Platform with Cage	48
75° Ladder - Internal Access	50
75° Ladder - Internal Access with Cage	51
75° Ladder - Midway Rest Internal Access	52
75° Ladder - Midway Rest with Top Platform	53
75° Ladder - Adjustable Platform with Cage	54
90° Ladder - Top Platform	56
90° Ladder - Parapet Platform	57
90° Ladder - Top Platform with Cage	59
90° Ladder - Parapet Platform with Cage	61
90° Ladder - Adjustable Platform with Cage	63
90° Ladder - Internal Access with Cage	64
90° Ladder - Internal Access with Midway Platform	65
<b>APPENDIX</b>	
Concrete Adhesive	66



## **READ CAREFULLY - SOMEONE'S LIFE DEPENDS ON IT**

- Read Installation Handbook thoroughly before use.
- Ensure all ladder warnings are complied with at all times.
- Never use a Permanent Ladder to support more than one person.
- Never use a damaged Permanent Ladder.
- Visually inspect Permanent Ladder for any signs of deterioration before each use.
- When using a Permanent Ladder all safety procedures must be complied with in accordance to the correct safety code/s of practice/s for safe work at heights.
- Rivets and bolts should be present and secure before the Permanent Ladder is used.
- Under no circumstances shall any temporary repairs be made to any Permanent Ladder.
- When a Permanent Ladder is to be exposed to a corrosive or an extreme environment which could significantly reduce the working load of the Permanent Ladder, the manufacturer or a competent height safety installer shall be consulted prior to such exposure.
- Ladder should be only used for access. If it is intended to work from a ladder, the work should be light duty and short duration.
- One person is to be on the ladder at any one time (except in emergency situations).
- Three points of contact with the ladder should be maintained on the ladder at all times. For example two feet and one hand, one foot and two hands, two feet and the frontal D ring on a fall arrest harness attached to the fall arrest line.
- When going up or down a ladder you should always face the ladder.
- All rungs are ergonomically designed for maximum grip at all angles.
- Heavy gauge aluminium for superior strength.
- Manufactured to AS 1657:2018 Standard.

## **MAINTENANCE**

- Visually inspect the components of the Permanent Ladder for corrosion. Superficial surface marking is permitted while deeper corrosion or pitting would require attention.
- Materials should not be placed on the Permanent Ladder while in storage.
- Permanent Ladder should be checked prior to every use and maintained in good condition.
- Under no circumstances shall any temporary repairs be made to any Permanent Ladder.

YOUR LIFE DEPENDS UPON THE CONTINUED EFFICIENCY AND DURABILITY OF THE EQUIPMENT, SO, A PROPER INSPECTION IS REQUIRED TO AVOID MISHAPS. IN ADDITION TO SAFETYLINK'S EQUIPMENT, ALL ANCILLARY EQUIPMENT MUST BE INSPECTED IN ACCORDANCE WITH APPLICABLE REGULATORY REQUIREMENTS AND THE MANUFACTURER'S INSTRUCTIONS.



**Ladder Catalogue**



**Ladder Handbook**



**Ladder Training**



**Terms & Conditions**



**SafetyLink Website**

**FOR MAINTENANCE ADVICE AND SERVICES PLEASE CONTACT SAFETYLINK**

**ON +61 249 641068 OR 1300 789545 FOR YOUR NEAREST SAFETYLINK INSPECTION SERVICE**

**CENTRE OR EMAIL: [info@safetylink.com](mailto:info@safetylink.com)**



Ladder Type (angle)	Fall Protection required for a fall distance of			Platforms & landings	Other measures
	0m to 3.5m	> 3.5 metres to 6 metres	> 6 metres		
75°	Three (3) points of contact when climbing.	Three (3) points of contact when climbing.	Three (3) points of contact when climbing restricted access or locked-off. Landings at not more than six (6) metres vertical distance a ladder cage or a harness-based fall-arrest system.	Maximum six (6) metres vertical distance between landings. Provide change of direction or stagger, or other protection (eg barrier or 1.5 metres landing length).	Provide warning signs. Provide other controls as required, based on site hazards, ladder configuration and frequency of use.
90°	Three (3) points of contact when climbing.	Three (3) points of contact when climbing. Restricted access or locked-off landings at not more than 4.5 metres vertical distance. or A ladder cage or a harness based fall-arrest system.	Three (3) points of contact when climbing restricted access or locked-off. Landings at not more than 4.5 metres vertical distance a ladder cage or a harness based fall-arrest system.	Maximum 4.5 metres vertical distance between landings. Provide change of direction or stagger, or other protection (eg barrier or 1.5 metres landing length).	Provide warning signs. Provide other controls as required, based on site hazards, ladder configuration and frequency of use.

## LADDER TECHNICAL SPECIFICATIONS

### MATERIALS

All components and accessories of SafetyLink ladder system are manufactured from structural aluminium.

### WEIGHT

Ladder head 2400mm, 5 Rung 1324mm: 6.8kg

Ladder section 2400mm: 7.8kg

Ladder section 1200mm: 3.9kg

One set of Splice Joints: 1kg

### DIMENSIONS

Ladder width-603mm

Stiles distance in between-525mm

Rung spacing-300mm

### FIXING TO SUPPORT STRUCTURE (NOT SUPPLIED BY SAFETYLINK)

#### STRUCTURE SURFACE FASTENERS

Timber: 3 x 14-Gauge Roofing Screws (to penetrate at least 35mm into structure).

Steel: 2 x M10 Bolts fixed through the structure.

Concrete: 2 x M10 Masonry Bolts or equivalent.

Steel Purlin: 3 x M10 Bolts/Toggle Bolts/Trifold Rivets.

### SAFE WORKING LOAD

SafetyLink ladder system is designed for single person use and rated for maximum 150kg.

The building or structure for the anchorage should be assessed by an Engineer, unless it is clear to a competent height safety installer that the structure is adequate.

### TESTING

The SafetyLink ladder system has been tested and manufactured in accordance with Australian Standard AS1657:2018.

## PERMANENT LADDER HEADS & SECTIONS

Product Code	Description	Weight (kg)
LADER002.FOOT.75	75° Foot with 2 Rivets & 1 Screw	0.642
LADER002.FOOT.90	90° Foot with 2 Rivets & 1 Screw	0.642
LADER002.SPL	Splice Joint: 600mm (one piece)	0.490
LADER002.LHD	Ladder Head - 2400mm length - 1324mm ladder section (5 rung)	6.790
LADER002.SEC.8	Ladder Section: 2400mm (8 rung)	7.770
LADER002.SEC.4	Ladder Section: 1200mm (4 rung)	3.885

## LADDER FOOT



- Ladder Feet are beneficial for maximising the length of a ladder and provide an equal spacing between the ground and first rung without the need to cut the ladder.

### PRODUCT CODE: LADER002.FOOT.90

Components	Description	Material	Qty
LADER002.FOOT.90	Foot: 90° Foot	Aluminium	1
RIVET_5x22mm	Rivet: 5 x 22mm Trifold	Aluminium	2
Screw 12-14x20mm	Screw: 12-14 x 20mm Self Tapping	Aluminium	1

## LADDER FOOT

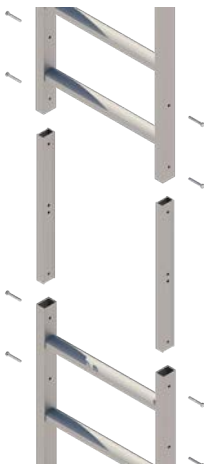


- Ladder Feet are beneficial for maximising the length of a ladder and provide an equal spacing between the ground and first rung without the need to cut the ladder.

### PRODUCT CODE: LADER002.FOOT.75

Components	Description	Material	Qty
LADER002.FOOT.75	Foot: 75° Foot	Aluminium	1
RIVET_5x22mm	Rivet: 5 x 22mm Trifold	Aluminium	2
Screw 12-14x20mm	Screw: 12-14 x 20mm Self Tapping	Aluminium	1

## LADDER SPLICE JOINS



- Splice Joints 600mm long.
- Must be installed to connect both sides of the ladder stile.
- Two required.
- Four (4) self tapping screws to be used to install splice joints when joining ladder sections together.

### PRODUCT CODE: LADER002.SPL

Components	Description	Material	Qty
LADER002.SPL.01	Splice Joint: 600mm	Aluminium	1
SCREW 12-14x20mm	Screw: 12-14x20mm Self Tapping	Galvanised	4

## LADDER HEAD SECTION



- Each Ladder Head Section is 2400mm overall with a 1324mm 5 Rung section.
- All rungs are ergonomically designed for maximum grip at all angles.
- Heavy gauge aluminium for superior strength.

### PRODUCT CODE: LADER002.LHD

Product Code	Description	Material	Qty
LADER002.LHD	Ladder Head: 2400, 5 Rung 1324mm (without stiffener)	Aluminium	1
LADER002.LHD.STF	Ladder Head: 2400, 5 Rung 1324mm (with stiffener, use with Vertical Lifeline)	Aluminium	1

## LADDER SECTION - 2400mm

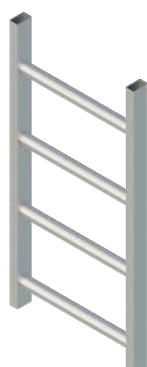


- Ladder Section is 2400mm overall with 8 rungs.
- All rungs are ergonomically designed for maximum grip at all angles.
- Heavy gauge aluminium for superior strength.

### PRODUCT CODE: LADER002.SEC.8

Components	Description	Material	Qty
LADER002.SEC.8	Ladder Section: 2400mm (8 rung)	Aluminium	1

## LADDER SECTION - 1200mm



- Ladder Section is 1200mm overall with 4 rungs.
- All rungs are ergonomically designed for maximum grip at all angles.
- Heavy gauge aluminium for superior strength.

### PRODUCT CODE: LADER002.SEC.4

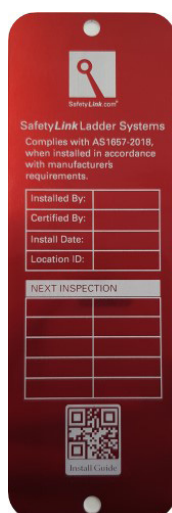
Components	Description	Material	Qty
LADER002.SEC.4	Ladder Section: 1200mm (4 rung)	Aluminium	1



## PERMANENT LADDER COMPONENTS

Product Code	Description	Weight (kg)
LADER002.SIGN	Ladder Entry Inspection Sign	0.020
LADER002.BASE.ANGLE_2x350	Ladder Base Support Angles - 2 x 350mm	0.514
LADER002.STF.1200	Ladder Stile Strengthening Bars: 1200mm (Set)	4.504
LADER002.STF.1800	Ladder Stile Strengthening Bars: 1800mm (Set)	6.373
LADER002.STF.2400	Ladder Stile Strengthening Bars: 2400mm (Set)	7.569
LADER002.CAP	Cap - for Ladder Heads	0.021

## LADDER ENTRY INSPECTION SIGN

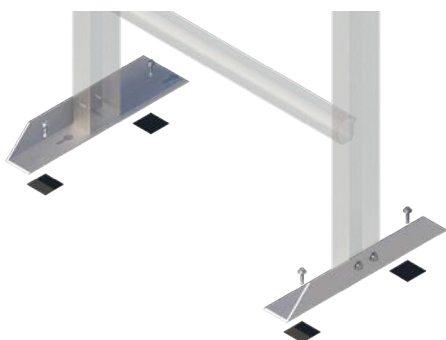


- Essential entry point information for ladder safety system.
- Notes installer information, safe use and inspection details.
- Size 150mm x 50mm x 1mm.

### PRODUCT CODE: LADER002.SIGN

Product Code	Description	Material	Qty
LADER002.SIGN.01	Ladder Entry Inspection Sign	Aluminium	1
RIVET_4.8x11.5mm	Rivet: 4.8x11.5mm	Aluminium	2

## LADDER BASE SUPPORT ANGLES

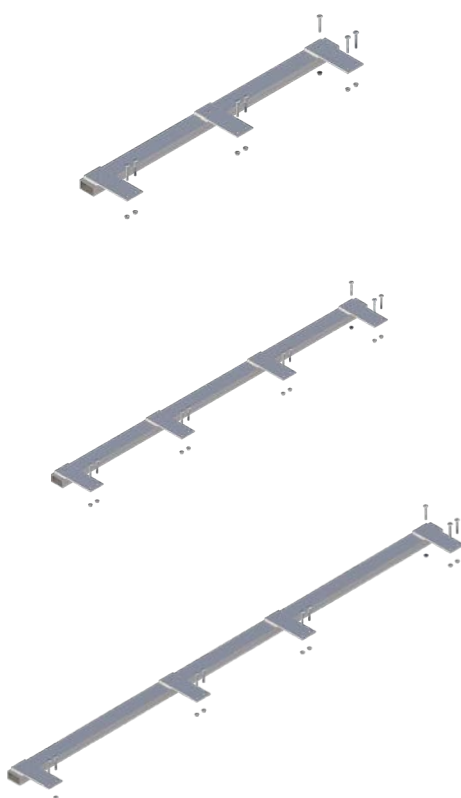


- Ladder Base Support Angle used to fasten base of ladder to structure/ flooring.

### PRODUCT CODE: LADER002.BASE.ANGLE\_2x350

Components	Description	Material	Qty
LADER002.BASE.ANGLE_1x350	Angle 50x50x3mm Length 350mm	Aluminium	2
SCREW 12-14x20mm	Screw: 12-14x20mm Self Tapping	Galvanised	8
FOAM-TAPE-SQUARE	Foam Tape: 40x40x1.6mm	EPDM	4

## LADDER STIFFENERS



- Ladder Stiffeners should be used on your installation if a building has very large eaves or a facade has a large overhang that brings the ladder out away from any structure to fix to.
- For example, hatch ladders with no fixing brackets.

### PRODUCT CODE: LADER002.STF.1200

Components	Description	Material	Qty
LADER002.STF.1200.01	Ladder Stile Strengthening Bars: 1200mm	Aluminium	2
BOLT-M8x60mm Cup HD	Bolt: M8x60mm Cup HD 316SS	316SS	14
NUT M8 Flanged_316	Nut: M8 Flanged 316SS	316SS	14

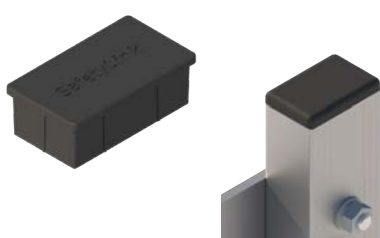
### PRODUCT CODE: LADER002.STF.1800

Components	Description	Material	Qty
LADER002.STF.1800.01	Ladder Stile Strengthening Bars: 1800mm	Aluminium	2
BOLT-M8x60mm Cup HD	Bolt: M8x60mm Cup HD 316SS	316SS	18
NUT M8 Flanged_316	Nut: M8 Flanged 316SS	316SS	18

### PRODUCT CODE: LADER002.STF.2400

Components	Description	Material	Qty
LADER002.STF.2400.01	Ladder Stile Strengthening Bars: 2400mm	Aluminium	2
BOLT-M8x60mm Cup HD	Bolt: M8x60mm Cup HD 316SS	316SS	18
NUT M8 Flanged_316	Nut: M8 Flanged 316SS	316SS	18

## LADDER CAP



- Place Ladder Caps into the open section at the top of the stiles to seal.
- Use a rubber mallet, gently tap it into stiles.

### PRODUCT CODE: LADER002.CAP

Components	Description	Material	Qty
LADER002.CAP	Ladder Stile Cap - Plastic	Plastic	1



## PERMANENT LADDER COMPONENTS

Product Code	Description	Weight (kg)
LADER002.BRK.SIDE	Ladder Fixing Bracket - Side Fix	
LADER002.BRK.SPND	Ladder Fixing Bracket - Suspended	4.000
LADER002.BRK200	Ladder Fixing Bracket - 200mm	1.542
LADER002.BRK250	Ladder Fixing Bracket - 250mm	1.656
LADER002.BRK500	Ladder Fixing Bracket - 500mm	2.720
LADER002.BRKADJ.600-1000	Ladder Fixing Bracket - 600mm to 1000mm	3.556
LADER002.BRKADJ.800-1200	Ladder Fixing Bracket - 800mm to 1200mm	3.939

## LADDER BRACKET - SIDE FIX

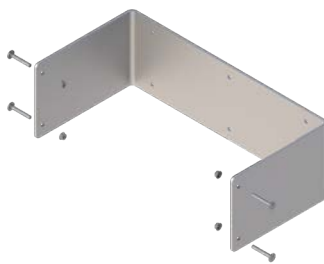


- Side Fix Ladder Bracket to be mounted to structure.
- Fix Ladder Fixing Bracket to Side Fix Bracket.

### PRODUCT CODE: LADER002.BRK.SIDE

Product Code	Description	Material	Qty
LADER002.BRK.SIDE.01	Ladder Side Fixing Bracket 1100x795mm	Aluminium	1
BOLT-M8x60mm Cup HD	Bolt: M8 x 60mm Cup Head	316SS	2
NUT M8 Flanged_316	Flanged Nut: M8	316SS	2

## LADDER BRACKET - SUSPENDED

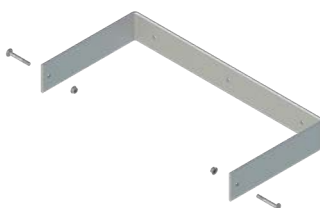


- Suspended Ladder Bracket is used at bottom of ladder when suspended off ground.

### PRODUCT CODE: LADER002.BRK.SPND

Product Code	Description	Material	Qty
LADER002.BRK.SPND	Suspended Ladder Bracket	Aluminium	1
BOLT-M8x60mm Cup HD	Bolt: M8 x 60mm Cup Head	316SS	4
NUT M8 Flanged_316	Flanged Nut: M8	316SS	4

## LADDER FIXING BRACKET - 200mm

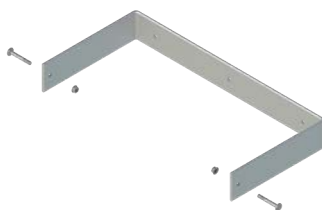


- Continuous piece of flatbar with no sharp bends to prevent stressing of aluminium.
- Heavy gauge aluminium for superior strength.

### PRODUCT CODE: LADER002.BRK200

Components	Description	Material	Qty
LADER002.BRK200.01	Ladder Fixing Bracket: 200mm	Aluminium	1
BOLT-M8x60mm Cup HD	Bolt: M8 x 60mm Cup Head	316SS	2
NUT M8 Flanged_316	Flanged Nut: M8	316SS	2

## LADDER FIXING BRACKET - 250mm

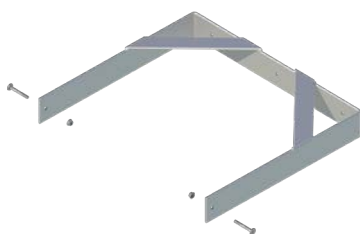


- Continuous piece of flatbar with no sharp bends to prevent stressing of aluminium.
- Heavy gauge aluminium for superior strength.

### PRODUCT CODE: LADER002.BRK250

Components	Description	Material	Qty
LADER002.BRK250.01	Ladder Fixing Bracket: 250mm	Aluminium	1
BOLT-M8x60mm Cup HD	Bolt: M8 x 60mm Cup Head	316SS	2
NUT M8 Flanged_316	Flanged Nut: M8	316SS	2

## LADDER FIXING BRACKET - EXTENDED 500mm

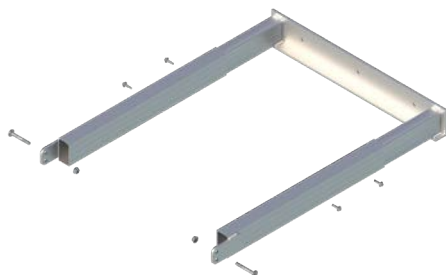


- Extended Brackets to be used when extending ladders past large gutters or eaves.
- Continuous piece of flatbar with no sharp bends to prevent stressing of aluminium.
- Heavy gauge aluminium for superior strength.

### PRODUCT CODE: LADER002.BRK500

Components	Description	Material	Qty
LADER002.BRK500.01	Ladder Fixing Bracket: 500mm	Aluminium	1
BOLT-M8x60mm Cup HD	Bolt: M8 x 60mm Cup Head	316SS	2
NUT M8 Flanged_316	Flanged Nut: M8	316SS	2

## LADDER FIXING BRACKET - EXTENDED 600 to 1000mm

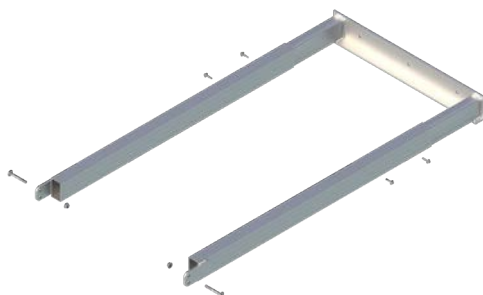


- Extended Brackets to be used when extending ladders past large gutters or eaves.
- Heavy gauge aluminium for superior strength.

### PRODUCT CODE: LADER002.BRKADJ.600-1000

Components	Description	Material	Qty
LADER002.BRKADJ.600-1000.01	Ladder Fixing Bracket: Adjustable 600-1000mm	Aluminium	1
SCREW 12-14x20mm	Screw: 12-14x20mm Self Tapping	Galvanised	4
BOLT-M8x60mm Cup HD	Bolt: M8 x 60mm Cup Head	316SS	2
NUT M8 Flanged_316	Flanged Nut: M8	316SS	2

## LADDER FIXING BRACKET - EXTENDED 800 to 1200mm



- Extended Brackets to be used when extending ladders past large gutters or eaves.
- Heavy gauge aluminium for superior strength.

### PRODUCT CODE: LADER002.BRKADJ.800-1200

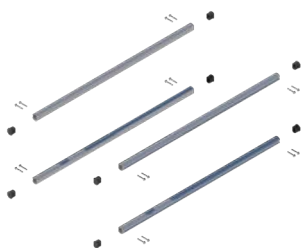
Components	Description	Material	Qty
LADER002.BRKADJ.800-1200.01	Ladder Fixing Bracket: Adjustable 800-1200mm	Aluminium	1
SCREW 12-14x20mm	Screw: 12-14x20mm Self Tapping	Galvanised	4
BOLT-M8x60mm Cup HD	Bolt: M8 x 60mm Cup Head	316SS	2
NUT M8 Flanged_316	Flanged Nut: M8	316SS	2



## PERMANENT LADDER COMPONENTS

Product Code	Description	Weight (kg)
LADER002.HR.PRPT.1M	Ladder Parapet Platform Handrail Kit - 1000mm	3.300
LADER002.HR.PRPT.2M	Ladder Parapet Platform Handrail Kit - 2000mm	006.2
LADER002.HR.90	Ladder Handrail Set: (2 arms) 90 Degrees	2.700
LADER002.HR.75	Ladder Handrail Set: (2 arms) 75 Degrees	2.940
LADER002.HR.RET	Ladder Retractable Stile Set (2 arms)	4.124

## LADDER PARAPET PLATFORM HANDRAIL KIT - 1000MM

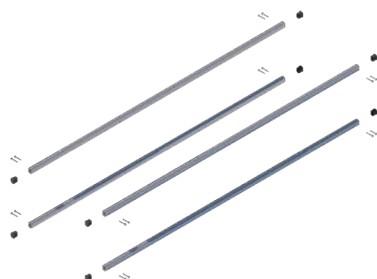


- Ladder Parapet Platform Handrail Kit - 1000mm.

### PRODUCT CODE: LADER002.HR.PRPT.1M

Components	Description	Material	Qty
GUARD_KR	Kneerail 1150mm	Aluminium	4
GUARD_KR.CAP	Kneerail Caps	316SS	8
SCREW 12-14x50mm	Screw: 12-14x50mm Self Tapping	316SS	16

## LADDER PARAPET PLATFORM HANDRAIL KIT - 2000MM

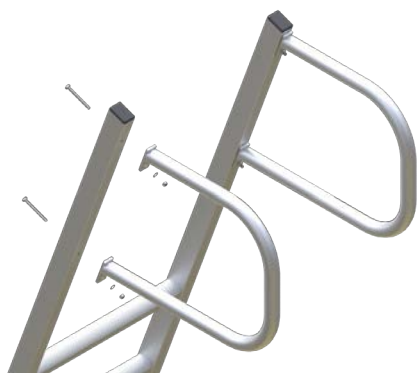


- Ladder Parapet Platform Handrail Kit - 2000mm.

### PRODUCT CODE: LADER002.HR.PRPT.2M

Components	Description	Material	Qty
GUARD_KR	Kneerail 2150mm	Aluminium	4
GUARD_KR.CAP	Kneerail Caps	316SS	8
SCREW 12-14x50mm	Screw: 12-14x50mm Self Tapping	316SS	16

## HANDRAIL SET 75 °

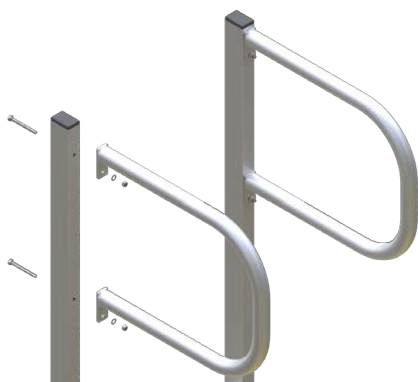


- Handrail modules for angled ladder - 75 Degrees.
- Heavy gauge aluminium for superior strength.

### PRODUCT CODE: LADER002.HR.75

Components	Description	Material	Qty
LADER002.HR.75.01	75 Degree Handrail	Aluminium	2
BOLT-M8x90mm Cup HD	Bolt: M8 x 90mm Cup Head	316SS	4
NUT M8 Flanged_316	Flanged Nut: M8	316SS	4

## HANDRAIL SET 90 °



- Handrail modules for vertical ladder - 90 Degrees.
- Heavy gauge aluminium for superior strength.

### PRODUCT CODE: LADER002.HR.90

Components	Description	Material	Qty
LADER002.HR.90.01	90 Degree Handrail	Aluminium	2
BOLT-M8x90mm Cup HD	Bolt: M8 x 90mm Cup Head	316SS	4
NUT M8 Flanged_316	Flanged Nut: M8	316SS	4

## LADDER RETRACTABLE STILES

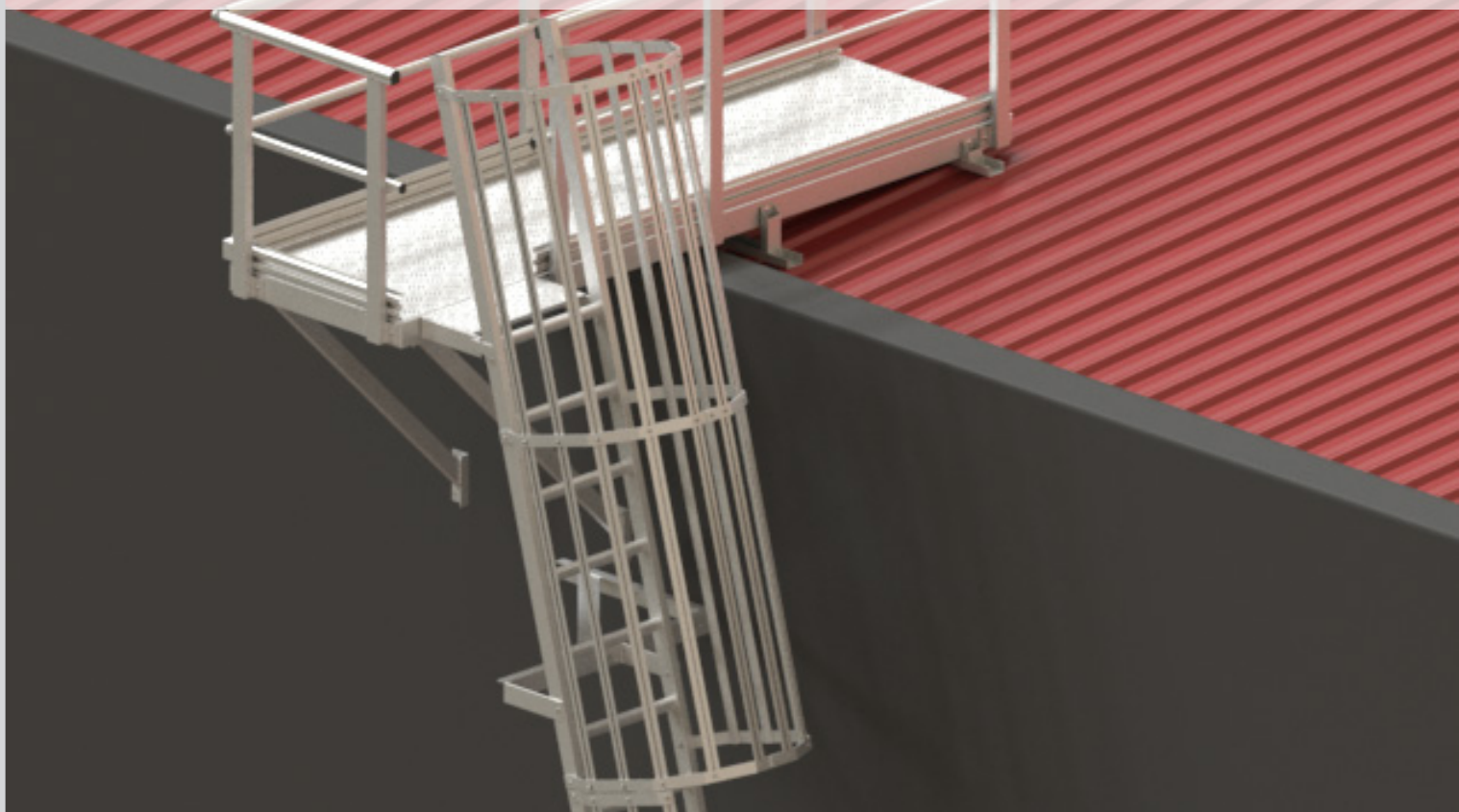


- Retractable Stile Set with automatic closing latch.
- Used for extending stiles through roof hatches.
- Once ladder has been installed up to underside of hatch. Fit stanchions on the front side of ladder flush with top.
- Bolt stanchion brackets to ladder with two (2) M8 bolts each side.
- Heavy gauge aluminium for superior strength.

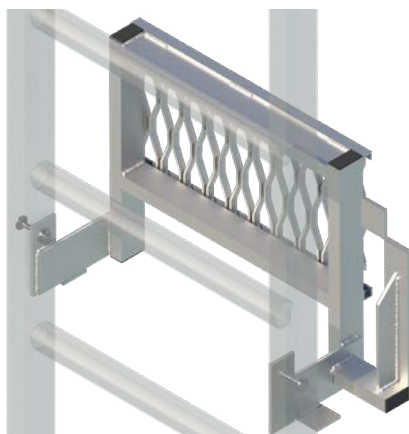
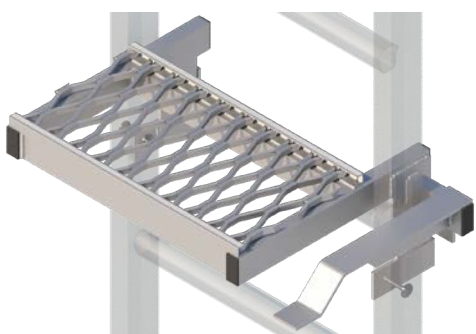
### PRODUCT CODE: LADER002.HR.RET

Components	Description	Material	Qty
LADER002.HR.RET.01	Stiles	Aluminium	2
BOLT-M8x90mm Cup HD	Bolt: M8 x 90mm Cup Head	316SS	4
NUT M8 Flanged_316	Flanged Nut: M8	316SS	4





## LADDER PLATFORM - FOLDING



- Ladder Folding Platform should only be used where it is not reasonably practicable to use a platform meeting the requirements of Section 3.2.5 of Ladder Handbook.
- The Fold Down Rest Platform should be stored in the up position when not in use.
- Heavy gauge aluminium for superior strength.

### PRODUCT CODE: LADER002.PLT.FD

Components	Description	Material	Qty
LADER002.PLT.FD	Ladder Folding Platform	Aluminium	1
BOLT-M8x60mm Cup HD	Bolt: M8 x 60mm Cup Head	316SS	2
NUT M8 Flanged_316	Flanged Nut: M8	316SS	2
WASHER M8_316SS	Washer: M8	316SS	4



## LADDER MIDWAY REST PLATFORM - SIDE ENTRY

- Midway Rest Platform with angle supports and self closing gate.
- Required to be not more than 4.5 metres apart for 90° ladder.
- Required to be not more than 6 metres apart for 75° ladder.
- Recommended for single person use rated for maximum 150kg.
- Heavy gauge aluminium for superior strength.



### PRODUCT CODE: LADER002.PLT.MID.S

Components	Description	Material	Qty
LADER002.PLT.MID.01	Platform: Midway Side Entry	Aluminium	1
GUARD001.GATE_700	Gate: 700mm	Aluminium	1
NUT M8 Flanged_316	Flanged Nut: M8	316SS	20
BOLT-M8x30mm Cup HD	Bolt: M8x30mm Cup Head	316SS	16
SCREW 12-14x20mm	Screw: 12-14x20mm Self Tapping	Galvanised	16
SCREW 12-14x50mm	Screw: 12-14x50mm Self Tapping	Galvanised	8
BOLT-M8x20mm Cup HD	Bolt: M8x20mm Cup Head	316SS	4
GUARD_HR.ELBW	Handrail Elbow Joint Kit	Aluminium	2
GUARD_KR.ELBW	Kneerail Elbow Joint Kit	Aluminium	2

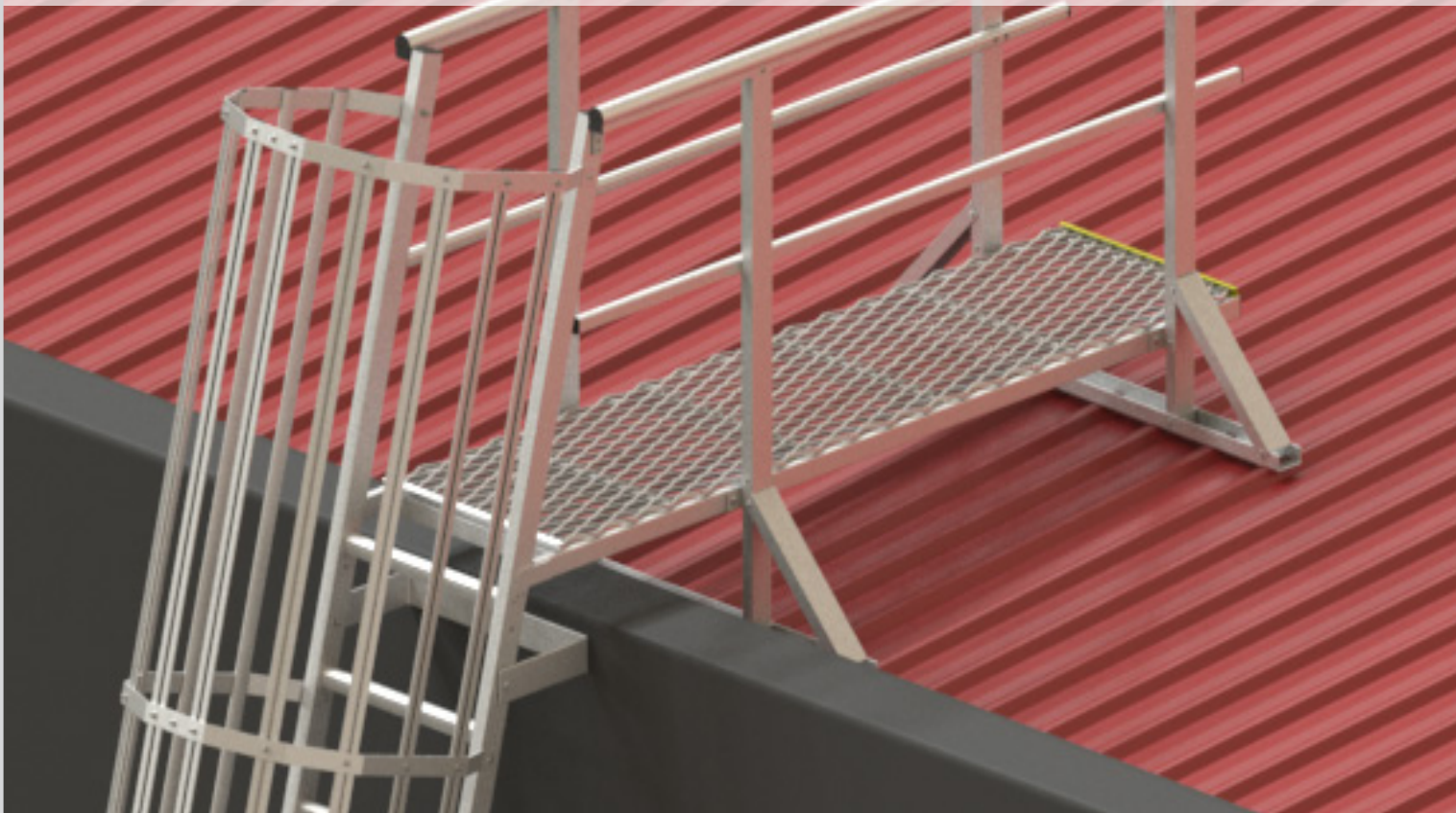
## LADDER MIDWAY REST PLATFORM - STILE MOUNT



- Midway Rest Platform.
- Stile Mount for 90 degree ladders.
- Ladder Folding Platform should only be used where it is not reasonably practicable to use a platform meeting the requirements of Section 3.2.5 of Ladder Handbook.
- Heavy gauge aluminium for superior strength.

### PRODUCT CODE: LADER002.PLT.MID.90

Components	Description	Material	Qty
LADER002.PLT.MID.90.01	Platform Kit: Stile Mount Midway	Aluminium	1
BOLT-M8x25mm-SS	Bolt: M8 x 25mm Set Screw	316SS	1
BOLT-M8x60mm-SS	Bolt: M8 x 60mm Set Screw	316SS	3
NUT M8 Flanged_316	Flanged Nut: M8	316SS	4



## LADDER LANDING - 90 DEGREES

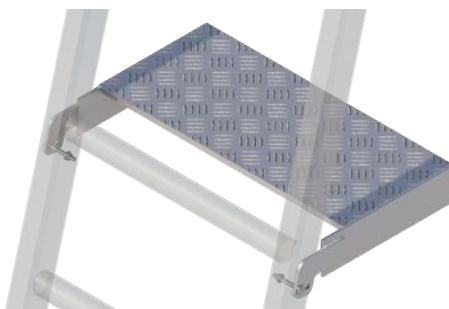


- Ladder Landing Bracket for 90 degree ladder.

### PRODUCT CODE: LADER002.BRK.LND90

Components	Description	Material	Qty
LADER002.BRK.LND90.01	Ladder Fixing Bracket Landing for 90°	Aluminium	1
BOLT-M8x60mm Cup HD	Bolt: M8 x 60mm Cup Head	316SS	2
NUT M8 Flanged_316	Flanged Nut: M8	316SS	2

## LADDER LANDING - 75 DEGREES



- Ladder Landing Bracket for 75 degree ladder.

### PRODUCT CODE: LADER002.BRK.LND75

Components	Description	Material	Qty
LADER002.BRK.LND75.01	Ladder Fixing Bracket Landing for 75°	Aluminium	1
BOLT-M8x60mm-SS	Bolt: M8 x 60mm Set Screw	316SS	2
NUT M8 Flanged_316	Flanged Nut: M8	316SS	2

## LADDER PLATFORM - ADJUSTABLE WALKWAY



- Adjustable Walkway Platform Kit.
- Two sizes - 2400mm & 3000mm.
- Heavy gauge aluminium for superior strength.

**PRODUCT CODE: LADER002.PLT.ADJ.2400 & LADER002.PLT.ADJ.3000**

Components	Description	Material	Qty
LADER002.PLT.ADJ.2400.01	Adjustable Walkway Kit	Aluminium	1
SCREW 12-14x20mm	Screw: 12-14x20mm Self Tapping	Galvanised	34
SCREW 12-14x35mm	Screw: 12-14x35mm Self Tapping	Galvanised	16
SCREW 12-14x50mm	Screw: 12-14x50mm Self Tapping	Galvanised	8
BOLT-M8x50mm Cup HD	Bolt: M8 x 50mm Cup Head	316SS	8
BOLT-M8x60mm Cup HD	Bolt: M8 x 60mm Cup Head	316SS	2
NUT M8 Flanged_316	Flanged Nut: M8	316SS	10
RIVET_5x22mm	Rivet: 5 x 22mm	Aluminium	8
FOAM-TAPE-SQUARE	Foam Tape: 40x40x1.6mm	EPDM	8

## LADDER PLATFORM - WALKWAY



- Walkway Platform Kit - 2400mm.
- Two sizes - 2400mm & 3000mm.
- Heavy gauge aluminium for superior strength.

**PRODUCT CODE: LADER002.PLT.WW.2400 & LADER002.PLT.WW.3000**

Components	Description	Material	Qty
LADER002.PLT.WW.2400.01	Walkway Kit	Aluminium	1
SCREW 12-14x20mm	Screw: 12-14x20mm Self Tapping	Galvanised	56
SCREW 12-14x35mm	Screw: 12-14x35mm Self Tapping	Galvanised	10
SCREW 12-14x50mm	Screw: 12-14x50mm Self Tapping	Galvanised	8
AL_GRATING DISC	Walkway Grating Washer	Aluminium	10
RIVET_5x22mm	Rivet: 5 x 22mm	Aluminium	14
FOAM-TAPE-SQUARE	Foam Tape: 40x40x1.6mm	EPDM	14

## LADDER HEAD TOP PLATFORM - SIDE ENTRY



- Ladder Head Side Entry Platform Kit.
- For use on roof pitches 0 to 8 degrees.
- Recommended for single person use rated for maximum 150kg.
- Heavy gauge aluminium for superior strength.

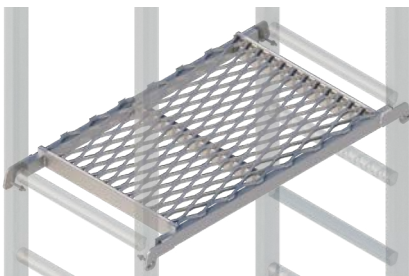
**PRODUCT CODE: LADER002.PLT.TOP.3200**

Components	Description	Material	Qty
LADER002.PLT.TOP.3200.01	Platform: Ladderhead Top Side Entry	Aluminium	1
GUARD001.GATE_700	Gate: 700mm	Aluminium	1
NUT M8 Flanged_316	Flanged Nut: M8	316SS	26
BOLT-M8x30mm Cup HD	Bolt: M8x30mm Cup Head	316SS	20
SCREW 12-14x20mm	Screw: 12-14x20mm Self Tapping	Galvanised	28
SCREW 12-14x50mm	Screw: 12-14x50mm Self Tapping	Galvanised	14
BOLT-M8x20mm Cup HD	Bolt: M8x20mm Cup Head	316SS	6
RIVET_5x22mm	Rivet: 05 x 22mm	Aluminium	6
FOAM-TAPE-SQUARE	Foam Tape: 40x40x1.6mm	EPDM	6
GUARD_HR.ELBW	Handrail Elbow Joint Kit	Aluminium	1
GUARD_KR.ELBW	Kneerail Elbow Joint Kit	Aluminium	1





## LADDER PLATFORM - PARAPET 1000mm



- Parapet Platform Landing Base.
- Heavy gauge aluminium for superior strength.
- NOTE: HANDRAIL NOT INCLUDED - PURCHASE SEPARATELY.

### PRODUCT CODE: LADER002.PLT.1M

Components	Description	Material	Qty
LADER002.PLT.1M.01	Platform Kit 1000mm	Aluminium	1
BOLT-M8x60mm Cup HD	Bolt: M8x60mm Cup Head	316SS	4
NUT M8 Flanged_316	Flanged Nut: M8	316SS	4

## LADDER PLATFORM - PARAPET 2000mm

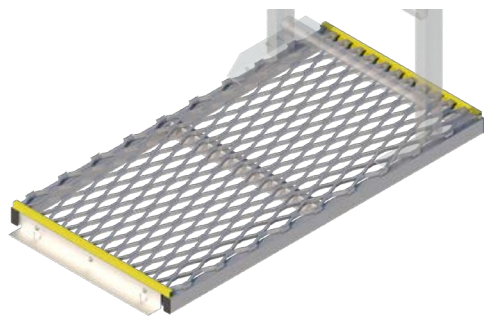


- Parapet Platform Landing Base.
- Heavy gauge aluminium for superior strength.
- NOTE: HANDRAIL NOT INCLUDED - PURCHASE SEPARATELY.

### PRODUCT CODE: LADER002.PLT.2M

Components	Description	Material	Qty
LADER002.PLT.2M.01	Platform Kit 2000mm	Aluminium	1
BOLT-M8x60mm Cup HD	Bolt: M8x60mm Cup Head	316SS	4
NUT M8 Flanged_316	Flanged Nut: M8	316SS	4

## LADDER PLATFORM - FOOTING

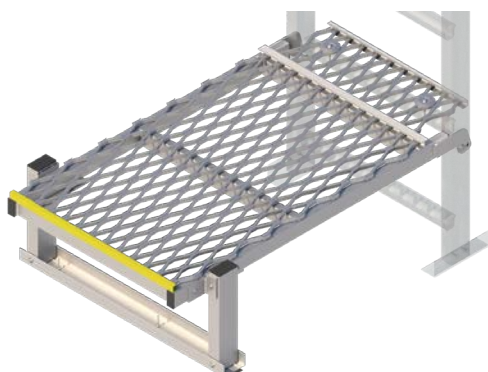


- Footing Platform must be level within 3 degrees.
- Step down to ground must not exceed 300mm.
- Platforms required if exit/entry not level.
- Heavy gauge aluminium for superior strength.

### PRODUCT CODE: LADER002.PLT.FOOT

Components	Description	Material	Qty
LADER002.PLT.FOOT.01	Footing Platform Kit	Aluminium	1
SCREW 12-14x20mm	Screw: 12-14x20mm Self Tapping	Galvanised	6
RIVET_5x22mm	Rivet: 5 x 22mm	Aluminium	4
FOAM-TAPE-SQUARE	Foam Tape: 40x40x1.6mm	EPDM	4

## LADDER PLATFORM - BASE



- Base Platform must be level within 3 degrees.
- Step down to roof/ground must not exceed 300mm.
- Platforms required if exit/entry not level.
- Suitable for roof pitches 0 to 15 degrees only.
- Heavy gauge aluminium for superior strength.

### PRODUCT CODE: LADER002.PLT.BASE

Components	Description	Material	Qty
LADER002.PLT.BASE.01	Base Platform Kit	Aluminium	1
SCREW 12-14x20mm	Screw: 12-14x20mm Self Tapping	Galvanised	12
SCREW 12-14x35mm	Screw: 12-14x35mm Self Tapping	Galvanised	2
BOLT-M8x60mm Cup HD	Bolt: M8x60mm Cup Head	316SS	2
AL_GRATING DISC	Washer: Grating Disc	Aluminium	2
NUT M8 Flanged_316	Flanged Nut: M8	316SS	2
RIVET_5x22mm	Rivet: 5 x 22mm	Aluminium	3
FOAM-TAPE-SQUARE	Foam Tape: 40x40x1.6mm	EPDM	3

## LADDER PLATFORM - TOP

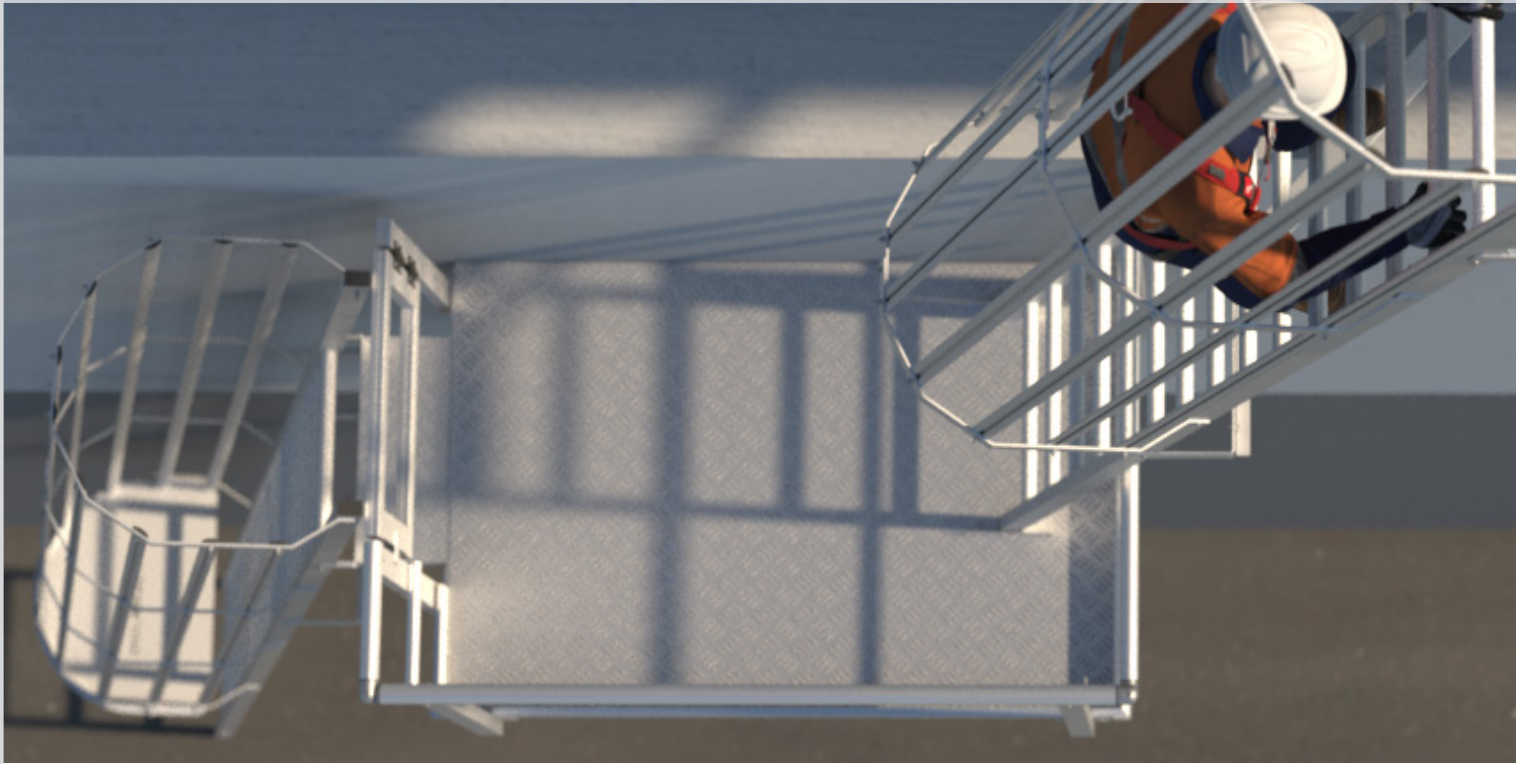


- Top Platform must be level with top of ladder rung (within 3 degrees).
- Step down to roof must not exceed 300mm.
- Adjustable, suitable for roof pitches 0 to 15 degrees only.
- Heavy gauge aluminium for superior strength.

### PRODUCT CODE: LADER002.PLT.TOP

Components	Description	Material	Qty
LADER002.PLT.TOP.01	Top Platform Kit	Aluminium	1
SCREW 12-14x20mm	Screw: 12-14x20mm Self Tapping	Galvanised	12
BOLT-M8x60mm Cup HD	Bolt: M8x60mm Cup Head	316SS	2
NUT M8 Flanged_316	Flanged Nut: M8	316SS	2
RIVET_5x22mm	Rivet: 5 x 22mm	Aluminium	3
FOAM-TAPE-SQUARE	Foam Tape: 40x40x1.6mm	EPDM	3





## LADDER HALF CAGE



- Where a ladder terminates at a platform fitted with guard railing that is less than 900mm horizontally from the front of the ladder, a half cage shall be installed.

### PRODUCT CODE: LADER002.CAGE.1.3 (0 to 1.3m)

Components	Description	Material	Qty
LADER002.CAGE.HOOP.01	Quarter Ladder Hoop	Aluminium	1
LADER002.CAGE.HOOP.02	Half Ladder Hoops	Aluminium	3
CAGE.BARS.1300	1300mm Cage Bars	Aluminium	8
BOLT-M8x60mm Cup HD	Bolt: M8x60mm Cup HD	316SS	3
BOLT-M8x20mm Cup HD	Bolt: M8x20mm Cup HD	316SS	20
NUT M8 Flanged_316	Flanged Nut: M8	316SS	23

## LADDER CAGE EXTENSION



- Ladder Cage Extension used where a ladder terminates at a platform fitted with guard railing that is less than 500mm laterally from the outside of either stile.

### PRODUCT CODE: LADER002.CAGE.EXTN

Components	Description	Material	Qty
LADER002.CAGE.JOIN.01	Ladder Cage Join Plate	Aluminium	1
LADER002.CAGE.EXTN.01	Side Extension Ladder Hoops	Aluminium	2
CAGE.BARS.1000	1000mm Cage Bars	Aluminium	3
BOLT-M8x60mm Cup HD	Bolt: M8x60mm Cup HD	316SS	2
BOLT-M8x30mm Cup HD	Bolt: M8x30mm Cup HD	316SS	2
BOLT-M8x20mm Cup HD	Bolt: M8x20mm Cup HD	316SS	5
NUT M8 Flanged_316	Flanged Nut: M8	316SS	9

## LADDER CAGE JOIN KIT



- Ladder Join Kit is used to join ladder cage sections together.

### PRODUCT CODE: LADER002.CAGE.JOIN

Components	Description	Material	Qty
LADER002.CAGE.JOIN.01	Ladder Cage Join	Aluminium	1
BOLT-M8x30mm Cup HD	Bolt: M8x30mm Cup HD	316SS	2
NUT M8 Flanged_316	Nut: M8 Flanged	316SS	2

## LADDER CAGES

- Ladder cages are highly recommended for ladders over 3.5 metres.
- Cage must start between 2000 to 2200mm above base of ladder.
- At the top of ladder, the cage shall extend not less than 1 metre above platform or to the top of the guard railing if installed.
- Ladder cage bars can be cut to achieve required length of the cage.
- Additional holes are present to allow adjustment in 150mm increments.
- Heavy gauge aluminium for superior strength.

### PRODUCT CODE: LADER002.CAGE.2 (0 to 2.0m)

Components	Description	Material	Qty
LADER002.CAGE.HOOP.02	Ladder Cage Hoops	Aluminium	2
LADER002.CAGE.2000	Ladder Cage Bars: 2000mm	Aluminium	10
LADER002.CAGE.CAP	Ladder Cage Bar End Caps	Plastic MDPE	20
BOLT-M8x20mm Cup HD	Bolt: M8 x 20mm Cup Head	316SS	22
BOLT-M8x60mm Cup HD	Bolt: M8 x 60mm Cup Head	316SS	4
NUT M8 Flanged_316	Flanged Nut: M8	316SS	26

### PRODUCT CODE: LADER002.CAGE.3 (2.01m to 3.0m)

Components	Description	Material	Qty
LADER002.CAGE.HOOP.02	Ladder Cage Hoops	Aluminium	3
LADER002.CAGE.3000	Ladder Cage Bars: 3000mm	Aluminium	10
LADER002.CAGE.CAP	Ladder Cage Bar End Caps	Plastic MDPE	20
BOLT-M8x20mm Cup HD	Bolt: M8 x 20mm Cup Head	316SS	33
BOLT-M8x60mm Cup HD	Bolt: M8 x 60mm Cup Head	316SS	6
NUT M8 Flanged_316	Flanged Nut: M8	316SS	39

### PRODUCT CODE: LADER002.CAGE.4 (3.01 to 4m)

Components	Description	Material	Qty
LADER002.CAGE.HOOP.02	Ladder Cage Hoops	Aluminium	3
LADER002.CAGE.4000	Ladder Cage Bars: 4000mm	Aluminium	10
LADER002.CAGE.CAP	Ladder Cage Bar End Caps	Plastic MDPE	20
BOLT-M8x20mm Cup HD	Bolt: M8 x 20mm Cup Head	316SS	33
BOLT-M8x60mm Cup HD	Bolt: M8 x 60mm Cup Head	316SS	6
NUT M8 Flanged_316	Flanged Nut: M8	316SS	39

### PRODUCT CODE: LADER002.CAGE.5 (4.01m to 5.0m)

Components	Description	Material	Qty
LADER002.CAGE.HOOP.02	Ladder Cage Hoops	Aluminium	4
LADER002.CAGE.5000	Ladder Cage Bars: 5000mm	Aluminium	10
LADER002.CAGE.CAP	Ladder Cage Bar End Caps	Plastic MDPE	20
BOLT-M8x20mm Cup HD	Bolt: M8 x 20mm Cup Head	316SS	44
BOLT-M8x60mm Cup HD	Bolt: M8 x 60mm Cup Head	316SS	8
NUT M8 Flanged_316	Flanged Nut: M8	316SS	52





## LADDER ACCESS DOOR



- Ladder door prevents access to ladder when not in use.
- 2400mm high and 600mm wide.
- Designed to simply lock into place with padlock (not provided).
- Heavy gauge aluminium for superior strength.

### PRODUCT CODE: LADER002.DOOR

Components	Description	Material	Qty
LADER002.DOOR.01	Ladder Access Lockable Door with handles	Aluminium	1
REC.RAPID006	Quick Link (8mm) Oval	316SS	1
LADER002.DOOR_LOCK	Ladder Door Lock	Aluminium	1
EZYSTAT.CABLE_1.6mm	Door Tether Wire	316SS	1



## LADDER ACCESS CAGE GATE



- Heavy gauge aluminium for superior strength.
- Prevents access to ladder when not in use.
- Designed to simply lock into place with padlock (not provided).

### PRODUCT CODE: LADER002.CAGE.GATE

Components	Description	Material	Qty
LADER002.CAGE.GATE.01	Gate	Aluminium	1
LADER002.CAGE.GATE_LOCK	Lock Plate	Aluminium	1
BOLT-M8x30mm Cup HD	Bolts: M8 x 30mm Cup Head	316SS	3
NUT M8 Flanged_316	Flanged Nut: M8	316SS	3

## LADDER HEAD SAFETY BAR

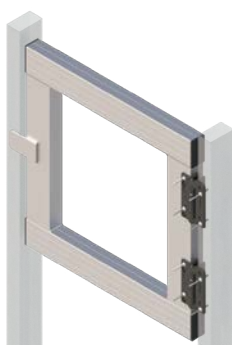


- Ladder Head Safety Bar to be mounted on a ladder head.

### PRODUCT CODE: LADER002.LHD.BAR

Components	Description	Material	Qty
LADER002.LHD.BAR	Ladder Head Safety Bar	Aluminium	1
BOLT-M8x90mm Cup HD	Bolts: M8 x 90mm Cup Head	316SS	1
NUT NYLOC_316	Nyloc Nut: M8	316SS	1

## LADDER GATE - 485mm

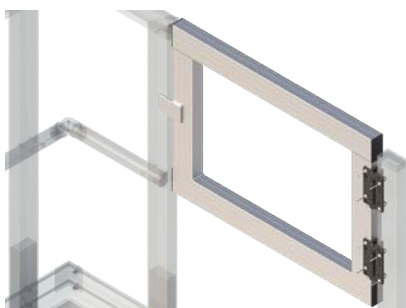


- Ladder Self Closing Gate - 485mm.
- To be used between stiles on ladder head.

### PRODUCT CODE: GUARD001.GATE\_485

Components	Description	Material	Qty
GUARD001.GATE_485.01	Ladder Self Closing Gate - 485mm	Aluminium	1
RIVET_5x22mm	Tri-fold Rivets 5x22mm	316SS	16

## LADDER GATE - 700mm



- Ladder Self Closing Gate - 700mm.
- To be used on ladder platforms.

### PRODUCT CODE: GUARD001.GATE\_700

Components	Description	Material	Qty
GUARD001.GATE_700.01	Ladder Self Closing Gate - 700mm	Aluminium	1
RIVET_5x22mm	Tri-fold Rivets 5x22mm	316SS	4

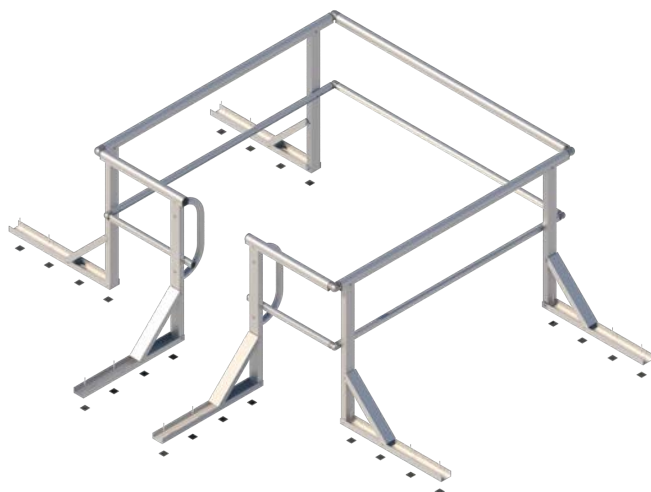


## PERMANENT GUARDRAIL & WALKWAY

Product Code	Description	Page
GUARD001.HATCH_SM	Guardrail: Hatch Roof Mounted	25
GUARD001.HATCH_CON	Guardrail: Hatch Concrete Mounted	25
GUARD001.GRAB_GUTR	Ladder Support Dock - Roof Gutter Mount	26
GUARD001.GRAB_PRPT	Ladder Support Dock - Parapet Mount	26
GUARD001.GRAB_SM	Ladder Grabrail - Surface Mount	26
GUARD001.GRAB_CM	Ladder Grabrail - Concrete Mount	26
GUARDK202	Guardrail: Folding Concrete Mount Starting Kit - 2 metres	27
GUARDK203	Guardrail: Folding Concrete Mount Starting Kit - 3 metres	27
GUARDK204	Guardrail: Folding Concrete Mount Starting Kit - 4 metres	27
GUARDK192	Guardrail: Folding Roof Mount Starting Kit - 2 metres	28
GUARDK193	Guardrail: Folding Roof Mount Starting Kit - 3 metres	28
GUARDK194	Guardrail: Folding Roof Mount Starting Kit - 4 metres	28
GUARDK141	Guardrail: Roof Mount Starting Kit	29
GUARDK142	Guardrail: Roof Mount Repeating Kit	29
GUARDK121	Guardrail: Concrete Base Mount Starting Kit	30
GUARDK122	Guardrail: Concrete Base Mount Repeating Kit	30
GUARDK131	Guardrail: Concrete Side Mount Starting Kit	31
GUARDK132	Guardrail: Concrete Side Mount Repeating Kit	31
GUARDK111	Walkway: Levelled Starting Kit (No Rail)	32
GUARDK112	Walkway: Levelled Repeating Kit (No Rail)	32
GUARDK101	Walkway: Flat Starting Kit (No Rail)	33
GUARDK102	Walkway: Flat Repeating Kit (No Rail)	33
GUARDK161	Walkway: Levelled Starting Kit (Single Rail)	34
GUARDK162	Walkway: Levelled Repeating Kit (Single Rail)	34
GUARDK151	Walkway: Flat Starting Kit (Single Rail)	35
GUARDK152	Walkway: Flat Repeating Kit (Single Rail)	35
GUARDK181	Walkway: Levelled Starting Kit (Double Rail)	36
GUARDK182	Walkway: Levelled Repeating Kit (Double Rail)	36
GUARDK171	Walkway: Flat Starting Kit (Double Rail)	37
GUARDK172	Walkway: Flat Repeating Kit (Double Rail)	37



## GUARDRAIL - ROOF MOUNT KIT FOR HATCH

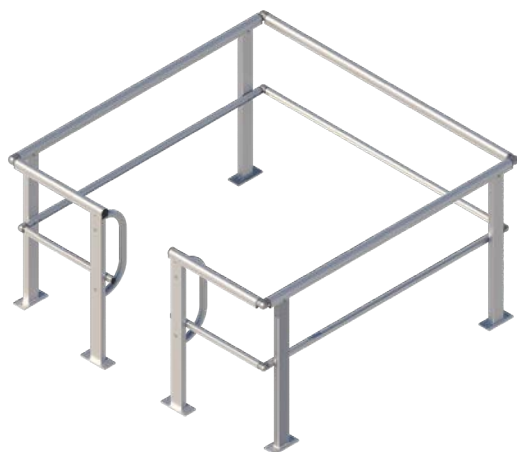


- Guardrail for roof hatches.
- For mounting to roof sheeting.
- Entry/Exit safety.
- Heavy gauge aluminium for superior strength.

### PRODUCT CODE: GUARD001.HATCH\_SM

Components	Description	Material	Qty
CUT: GUARD_HR	Handrail Profile - 1800mm	Aluminium	3
CUT: GUARD_KR	Kneerail Profile - 1745mm	Aluminium	3
CUT: GUARD_HR	Handrail Profile - 650mm	Aluminium	2
CUT: GUARD_KR	Kneerail Profile - 650mm	Aluminium	2
GUARD_HR.CAP	Handrail End Cap	Plastic MDPE	2
GUARD_KR.CAP	Kneerail End Cap	Plastic MDPE	2
GUARD001.GRAB_BOLT	Grabrail Set Kit	Aluminium	1
GUARD001.WW.POST.06	Post Kit – Roof Mount	Aluminium	6
GUARD_KR.ELBW	Kneerail Elbow Joint Kit	Aluminium	4
GUARD_HR.ELBW	Handrail Elbow Joint Kit	Aluminium	4

## GUARDRAIL - CONCRETE MOUNT KIT FOR HATCH



- Guardrail for roof hatches.
- For mounting to concrete.
- Entry/Exit safety.
- Heavy gauge aluminium for superior strength.

### PRODUCT CODE: GUARD001.HATCH\_CON

Components	Description	Material	Qty
CUT: GUARD_HR	Handrail Profile - 1800mm	Aluminium	3
CUT: GUARD_KR	Kneerail Profile - 1745mm	Aluminium	3
CUT: GUARD_HR	Handrail Profile - 650mm	Aluminium	2
CUT: GUARD_KR	Kneerail Profile - 650mm	Aluminium	2
GUARD_HR.CAP	Handrail End Cap	Plastic MDPE	2
GUARD_KR.CAP	Kneerail End Cap	Plastic MDPE	2
GUARD001.GRAB_BOLT	Grabrail Set Kit	Aluminium	1
GUARD001.WW.POST.02	Heavy Duty Post Kit – Base Mount	Aluminium	6
GUARD_KR.ELBW	Kneerail Elbow Joint Kit	Aluminium	4
GUARD_HR.ELBW	Handrail Elbow Joint Kit	Aluminium	4

## LADDER SUPPORT DOCK - ROOF GUTTER MOUNT



- Ladder Support Dock.
- Gutter/Roof mounted.
- Rivets supplied to fix to roof sheeting/gutter.

### PRODUCT CODE: GUARD001.GRAB\_GUTR

Components	Description	Material	Qty
GUARD001.GRAB_GUTR.01	Gutter/Roof Mount Ladder Support Dock	Aluminium	1
LADFX001	LadderLink: Standard	Aluminium	1
SCREW 12-14x20mm	Screw: 12-14x20mm Self Tapping	Galvanised	14
RIVET_5x22mm	Rivet: 5 x 22mm	Aluminium	9
FOAM-TAPE-SQUARE	Foam Tape: 40x40x1.6mm	EPDM	9

## LADDER SUPPORT DOCK - PARAPET MOUNT

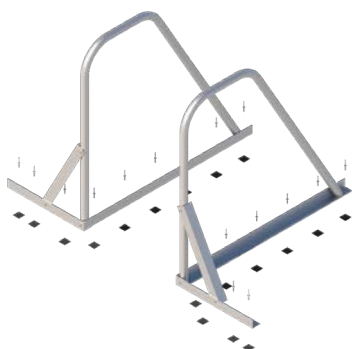


- Ladder Support Dock.
- Parapet mounted.
- Fixings not supplied.

### PRODUCT CODE: GUARD001.GRAB\_PRPT

Components	Description	Material	Qty
GUARD001.GRAB_PRPT.01	Parapet Mount Ladder Support Dock	Aluminium	1
LADFX010	LadderLink: Parapet	Aluminium	1
SCREW 12-14x20mm	Screw: 12-14x20mm Self Tapping	Galvanised	10

## LADDER GRABRAIL - ROOF MOUNT

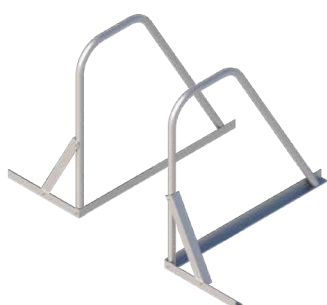


- Ladder Grabrails for mounting to roof sheeting.
- Entry/Exit safety.

### PRODUCT CODE: GUARD001.GRAB\_SM

Components	Description	Material	Qty
GUARD001.GRAB_SM.01	Roof Mount Grabrail	Aluminium	2
RIVET_5x22mm	Rivet: 5x22mm	Aluminium	18
SCREW 12-14x20mm	Screw: 12-14x20mm Self Tapping	316SS	6
FOAM-TAPE-SQUARE	Foam Tape: 40x40x1.6mm	EPDM	18

## LADDER GRABRAIL - CONCRETE MOUNT



- Ladder Grabrails for mounting to concrete.
- Entry/Exit safety.
- Concrete fixings not included.

### PRODUCT CODE: GUARD001.GRAB\_CM

Components	Description	Material	Qty
GUARD001.GRAB_CM.01	Roof Mount Grabrail	Aluminium	2

## GUARDRAIL - FOLDING CONCRETE BASE MOUNT GUARDRAIL KIT



- Six (6) metre heavy duty folding base mount guardrail kit.
- Single guardrail.
- For use on concrete structures.
- Heavy gauge aluminium for superior strength.

### TWO (2) METRE LENGTH - PRODUCT CODE: GUARDK202

Components	Description	Material	Qty
GUARD_HR	Handrail Profile: 2000mm	Aluminium	1
GUARD_KR	Kneerail Profile: 2000mm	Aluminium	1
SCREW 12-14x20mm	Screw: 12-14 x 20mm Self Tapping Tek Screw	Galvanised	4
GUARD001.WW.POST.11	Post Kit – Fold Down Concrete Mount	Aluminium	2
GUARD_HR.BRACE_BEND	Handrail Brace	Aluminium	2
GUARD_HR.CAP	Handrail End Cap	Plastic MDPE	2
GUARD_KR.CAP	Kneerail End Cap	Plastic MDPE	2

### THREE (3) METRE LENGTH - PRODUCT CODE: GUARDK203

Components	Description	Material	Qty
GUARD_HR	Handrail Profile: 3000mm	Aluminium	1
GUARD_KR	Kneerail Profile: 3000mm	Aluminium	1
SCREW 12-14x20mm	Screw: 12-14 x 20mm Self Tapping Tek Screw	Galvanised	4
GUARD001.WW.POST.11	Post Kit – Fold Down Concrete Mount	Aluminium	3
GUARD_HR.BRACE_BEND	Handrail Brace	Aluminium	2
GUARD_HR.CAP	Handrail End Cap	Plastic MDPE	2
GUARD_KR.CAP	Kneerail End Cap	Plastic MDPE	2

### FOUR (4) METRE LENGTH - PRODUCT CODE: GUARDK204

Components	Description	Material	Qty
GUARD_HR	Handrail Profile: 4000mm	Aluminium	1
GUARD_KR	Kneerail Profile: 4000mm	Aluminium	1
SCREW 12-14x20mm	Screw: 12-14 x 20mm Self Tapping Tek Screw	Galvanised	4
GUARD001.WW.POST.11	Post Kit – Fold Down Concrete Mount	Aluminium	3
GUARD_HR.BRACE_BEND	Handrail Brace	Aluminium	2
GUARD_HR.CAP	Handrail End Cap	Plastic MDPE	2
GUARD_KR.CAP	Kneerail End Cap	Plastic MDPE	2

## GUARDRAIL - FOLDING ROOF MOUNT GUARDRAIL KIT



- Six (6) metre folding roof mount guardrail kit.
- Single guardrail.
- For installation on roof sheeting with pitches 0 to 25 degrees, for roof pitch greater than 12 degrees, a second Kneerail is required.
- High strength gauge aluminium.

### TWO (2) METRE LENGTH - PRODUCT CODE: GUARDK192

Components	Description	Material	Qty
GUARD_HR	Handrail Profile: 2000mm	Aluminium	1
GUARD_KR	Kneerail Profile: 2000mm	Aluminium	1
SCREW 12-14x20mm	Screw: 12-14 x 20mm Self Tapping Tek Screw	Galvanised	4
GUARD001.WW.POST.05	Post Kit – Folding Roof Mount	Aluminium	2
GUARD_HR.BRACE_BEND	Handrail Brace	Aluminium	2
GUARD_HR.CAP	Handrail End Cap	Plastic MDPE	2
GUARD_KR.CAP	Kneerail End Cap	Plastic MDPE	2

### THREE (3) METRE LENGTH - PRODUCT CODE: GUARDK193

Components	Description	Material	Qty
GUARD_HR	Handrail Profile: 3000mm	Aluminium	1
GUARD_KR	Kneerail Profile: 3000mm	Aluminium	1
SCREW 12-14x20mm	Screw: 12-14 x 20mm Self Tapping Tek Screw	Galvanised	4
GUARD001.WW.POST.05	Post Kit – Folding Roof Mount	Aluminium	3
GUARD_HR.BRACE_BEND	Handrail Brace	Aluminium	2
GUARD_HR.CAP	Handrail End Cap	Plastic MDPE	2
GUARD_KR.CAP	Kneerail End Cap	Plastic MDPE	2

### FOUR (4) METRE LENGTH - PRODUCT CODE: GUARDK194

Components	Description	Material	Qty
GUARD_HR	Handrail Profile: 4000mm	Aluminium	1
GUARD_KR	Kneerail Profile: 4000mm	Aluminium	1
SCREW 12-14x20mm	Screw: 12-14 x 20mm Self Tapping Tek Screw	Galvanised	4
GUARD001.WW.POST.05	Post Kit – Folding Roof Mount	Aluminium	3
GUARD_HR.BRACE_BEND	Handrail Brace	Aluminium	2
GUARD_HR.CAP	Handrail End Cap	Plastic MDPE	2
GUARD_KR.CAP	Kneerail End Cap	Plastic MDPE	2

## GUARDRAIL - ROOF MOUNT GUARDRAIL STARTING KIT



- Six (6) metre roof mount guardrail starting kit.
- Single guardrail.
- To extend guardrail length add six (6) metre repeating kits use (GUARDK142).
- For installation on roof sheeting with pitches 0 to 25 degrees, for roof pitch greater than 12 degrees, a second Kneerail is required.
- High strength gauge aluminium.

### PRODUCT CODE: GUARDK141

Components	Description	Material	Qty
GUARD_HR	Six (6) metre Handrail Profile	Aluminium	1
GUARD_KR	Six (6) metre Kneerail Profile	Aluminium	1
GUARD_HR.CAP	Handrail End Cap	Plastic MDPE	2
GUARD_KR.CAP	Kneerail End Cap	Plastic MDPE	2
GUARD_HR.BRACE	Handrail Brace	Aluminium	2
SCREW 12-14x20mm	Screw: 12-14 x 20mm Self Tapping Tek Screw	Galvanised	4
GUARD001.WW.POST.06	Post Kit – Roof Mount	Aluminium	4

## GUARDRAIL - ROOF MOUNT GUARDRAIL REPEATING KIT



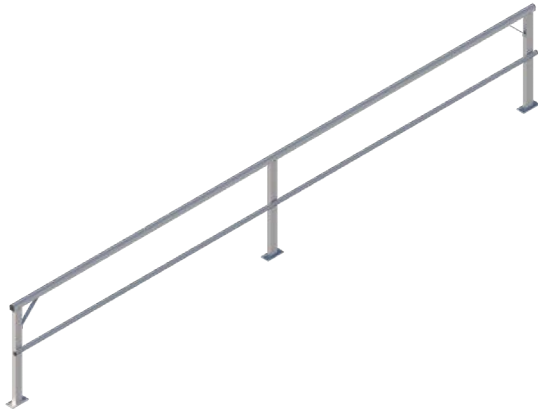
- Six (6) metre roof mount guardrail repeating kit.
- Single guardrail.
- For installation on roof sheeting with pitches 0 to 25 degrees, for roof pitch greater than 12 degrees, a second Kneerail is required.
- High strength gauge aluminium.

### PRODUCT CODE: GUARDK142

Components	Description	Material	Qty
GUARD_HR	Six (6) metre Handrail Profile	Aluminium	1
GUARD_KR	Six (6) metre Kneerail Profile	Aluminium	1
SCREW 12-14x20mm	Screw: 12-14 x 20mm Self Tapping Tek Screw	Galvanised	8
GUARD001.WW.POST.06	Post Kit – Roof Mount	Aluminium	3
GUARD_HR.SPL.245	Handrail Splice 245mm	Aluminium	1
GUARD_KR.SPL.245	Kneerail Splice 245mm	Aluminium	1



## GUARDRAIL - CONCRETE BASE MOUNT GUARDRAIL STARTING KIT

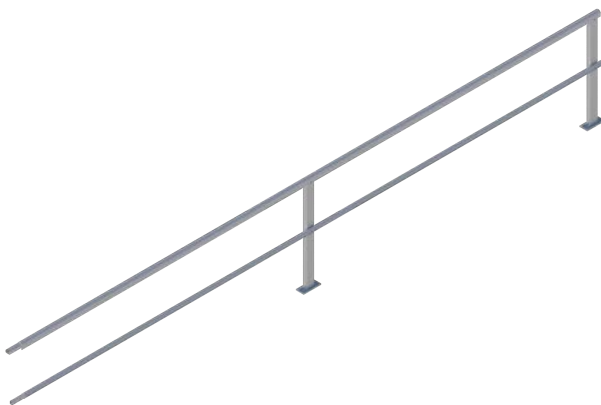


- Six (6) metre heavy duty base mount guardrail starting kit.
- Single guardrail.
- To extend guardrail length add six (6) metre repeating kits use (GUARDK122).
- For use on concrete structures.
- Heavy gauge aluminium for superior strength.

### PRODUCT CODE: GUARDK121

Components	Description	Material	Qty
GUARD_HR	Six (6) metre Handrail Profile	Aluminium	1
GUARD_KR	Six (6) metre Kneerail Profile	Aluminium	1
GUARD_HR.CAP	Handrail End Cap	Plastic MDPE	2
GUARD_KR.CAP	Kneerail End Cap	Plastic MDPE	2
GUARD_HR.BRACE	Handrail Brace	Aluminium	2
SCREW 12-14x20mm	Screw: 12-14 x 20mm Self Tapping Tek Screw	Galvanised	4
GUARD001.WW.POST.02	Heavy Duty Post Kit – Base Mount	Aluminium	3

## GUARDRAIL - CONCRETE BASE MOUNT GUARDRAIL REPEATING KIT

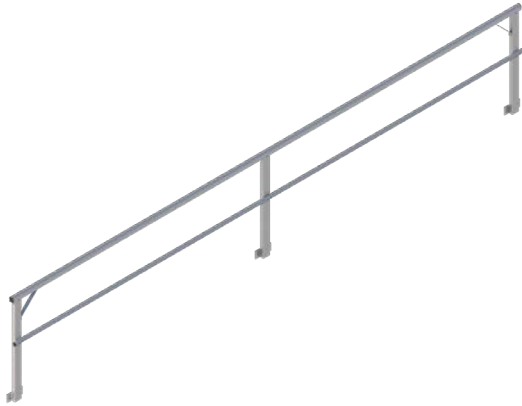


- Six (6) metre heavy duty base mount guardrail repeating kit.
- Single guardrail.
- For use on concrete structures.
- Heavy gauge aluminium for superior strength.

### PRODUCT CODE: GUARDK122

Components	Description	Material	Qty
GUARD_HR	Six (6) metre Handrail Profile	Aluminium	1
GUARD_KR	Six (6) metre Kneerail Profile	Aluminium	1
SCREW 12-14x20mm	Screw: 12-14 x 20mm Self Tapping Tek Screw	Galvanised	8
GUARD001.WW.POST.02	Heavy Duty Post Kit – Base Mount	Aluminium	2
GUARD_HR.SPL.245	Handrail Splice 245mm	Aluminium	1
GUARD_KR.SPL.245	Kneerail Splice 245mm	Aluminium	1

## GUARDRAIL - CONCRETE SIDE MOUNT GUARDRAIL STARTING KIT

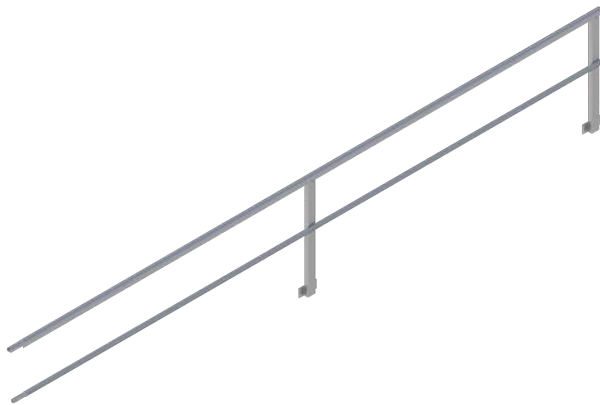


- Six (6) metre heavy duty side mount guardrail starting kit.
- Single guardrail.
- To extend guardrail length add six (6) metre repeating kits use (GUARDK132).
- For use on concrete structures.
- Heavy gauge aluminium for superior strength.

### PRODUCT CODE: GUARDK131

Components	Description	Material	Qty
GUARD_HR	Six (6) metre Handrail Profile	Aluminium	1
GUARD_KR	Six (6) metre Kneerail Profile	Aluminium	1
GUARD_HR.CAP	Handrail End Cap	Plastic MDPE	2
GUARD_KR.CAP	Kneerail End Cap	Plastic MDPE	2
GUARD_HR.BRACE	Handrail Brace	Aluminium	2
SCREW 12-14x20mm	Screw: 12-14 x 20mm Self Tapping Tek Screw	Galvanised	4
GUARD001.WW.POST.04	Heavy Duty Post Kit	Aluminium	3

## GUARDRAIL - CONCRETE SIDE MOUNT GUARDRAIL REPEATING KIT

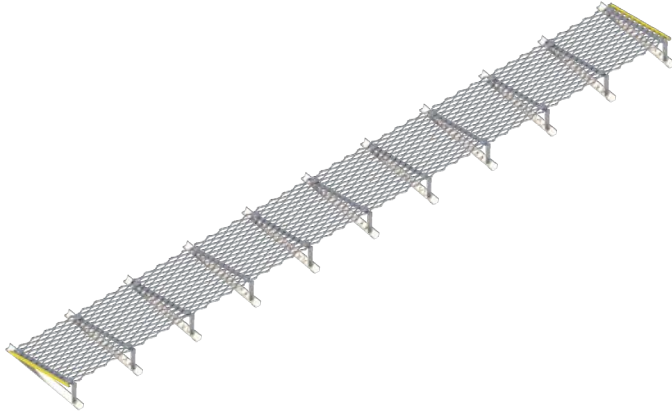


- Six (6) metre heavy duty side mount guardrail repeating kit.
- Single guardrail.
- For use on concrete structures.
- Heavy gauge aluminium for superior strength.

### PRODUCT CODE: GUARDK132

Components	Description	Material	Qty
GUARD_HR	Six (6) metre Handrail Profile	Aluminium	1
GUARD_KR	Six (6) metre Kneerail Profile	Aluminium	1
SCREW 12-14x20mm	Screw: 12-14 x 20mm Self Tapping Tek Screw	Galvanised	8
GUARD001.WW.POST.04	Heavy Duty Post Kit	Aluminium	2
GUARD_HR.SPL.245	Handrail Splice 245mm	Aluminium	1
GUARD_KR.SPL.245	Kneerail Splice 245mm	Aluminium	1

## WALKWAY - LEVELLED STARTING KIT

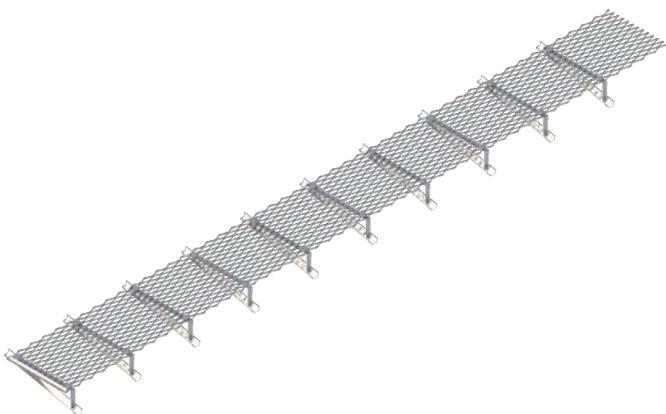


- Six (6) metre levelled walkway starting kit for angled roof profiles.
- To extend walkway length add six (6) metre repeating kits use (GUARDK112).
- No guardrail.
- AS1657 requires walkways on roof pitches over seven (7) degrees to be levelled.
- Custom made for roof pitches 1 to 25 degrees.
- Heavy gauge aluminium for superior strength.

### PRODUCT CODE: GUARDK111

Components	Description	Material	Qty
AL_GRATING 13mm	Six (6) metre Walkway Grating	Aluminium	1
SCREW 12-14x20mm	Screw: 12-14 x 20mm Self Tapping Tek Screw	Galvanised	4
SCREW 12-14x35mm	Screw: 12-14 x 35mm Self Tapping Tek Screw	Galvanised	22
AL_GRATING DISC	Grating Disc	Aluminium	22
GUARD001.SPRT_WELD	Walkway Support Batten - Welded	Aluminium	11
GUARD_END.Y.595	Walkway End Bar 595mm Yellow	Aluminium	2

## WALKWAY - LEVELLED REPEATING KIT

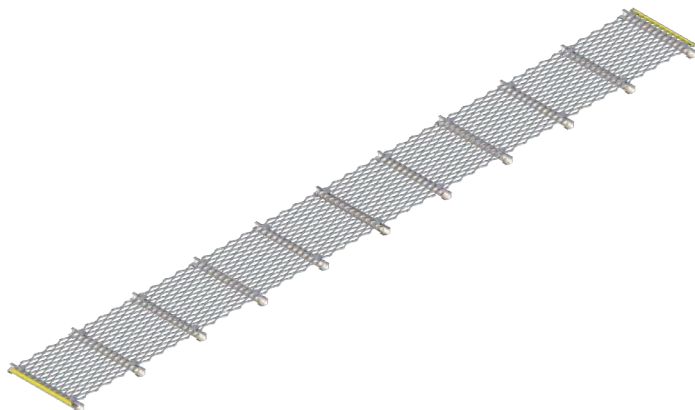


- Six (6) metre levelled walkway repeating kit for angled roof profiles.
- AS1657 requires walkways on roof pitches over seven (7) degrees to be levelled.
- No guardrail.
- Custom made for roof pitches 1 to 25 degrees.
- Heavy gauge aluminium for superior strength.

### PRODUCT CODE: GUARDK112

Components	Description	Material	Qty
AL_GRATING 13mm	Six (6) metre Walkway Grating	Aluminium	1
SCREW 12-14x20mm	Screw: 12-14 x 20mm Self Tapping Tek Screw	Galvanised	4
SCREW 12-14x35mm	Screw: 12-14 x 35mm Self Tapping Tek Screw	Galvanised	20
AL_GRATING DISC	Grating Disc	Aluminium	20
GUARD001.SPRT_WELD	Walkway Support Batten - Welded	Aluminium	10
GUARD_JOIN.595	Walkway Joiner Bar 595mm	Aluminium	1

## WALKWAY - FLAT STARTING KIT

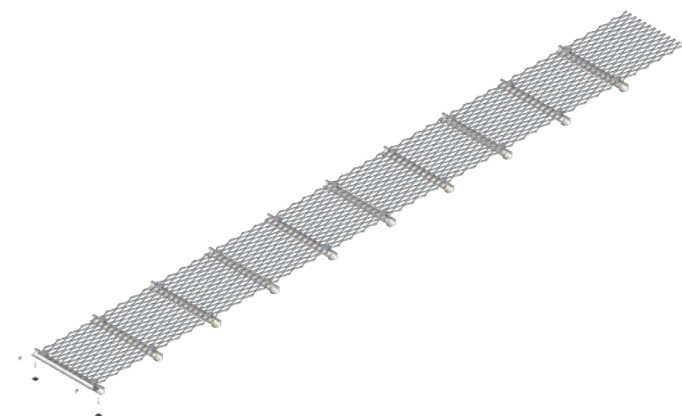


- Six (6) metre flat walkway starting kit.
- No guardrail.
- To extend walkway length add six (6) metre repeating kits use (GUARDK102).
- Suitable for roof pitches 0 to 7 degrees. For pitches over 7 degrees use (GUARDK111).
- Heavy gauge aluminium for superior strength.

### PRODUCT CODE: GUARDK101

Components	Description	Material	Qty
AL_GRATING 13mm	Six (6) metre Walkway Grating	Aluminium	1
SCREW 12-14x20mm	Screw: 12-14 x 20mm Self Tapping Tek Screw	Galvanised	4
SCREW 12-14x35mm	Screw: 12-14 x 35mm Self Tapping Tek Screw	Galvanised	22
AL_GRATING DISC	Grating Disc	Aluminium	22
RIVET_5x22mm	Tri-fold Rivets 5.0x22mm	Aluminium	22
FOAM-TAPE-SQUARE	Foam Tape: 40mm x 40mm x 1.6mm	EPDM	22
GUARD_END.Y.595	Walkway End Bar 595mm Yellow	Aluminium	2
GUARD_WALK.CHL.700	Walkway Support Batten 700mm	Aluminium	11

## WALKWAY - FLAT REPEATING KIT

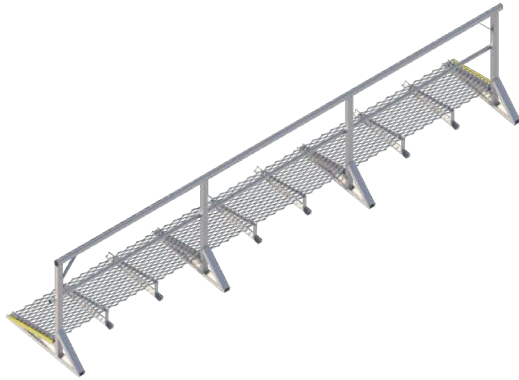


- Six (6) metre flat walkway repeating kit.
- No guardrail.
- Suitable for roof pitches 0 to 7 degrees. For pitches over 7 degrees use (GUARDK112).
- Heavy gauge aluminium for superior strength.

### PRODUCT CODE: GUARDK102

Components	Description	Material	Qty
AL_GRATING 13mm	Six (6) metre Walkway Grating	Aluminium	1
SCREW 12-14x20mm	Screw: 12-14 x 20mm Self Tapping Tek Screw	Galvanised	4
SCREW 12-14x35mm	Screw: 12-14 x 35mm Self Tapping Tek Screw	Galvanised	20
AL_GRATING DISC	Grating Disc	Aluminium	20
RIVET_5x22mm	Tri-fold Rivets 5.0x22mm	Aluminium	20
FOAM-TAPE-SQUARE	Foam Tape: 40mm x 40mm x 1.6mm	EPDM	20
GUARD_JOIN.595	Walkway Joiner Bar 595mm	Aluminium	1
GUARD_WALK.CHL.700	Walkway Support Batten 700mm	Aluminium	10

## WALKWAY - SINGLE GUARDRAIL LEVELLED STARTING KIT



- Six (6) metre levelled walkway starting kit for angled roof profiles.
- To extend walkway length add six (6) metre repeating kits use (GUARDK162).
- Single guardrail.
- AS1657 requires walkways on roof pitches over seven (7) degrees to be levelled.
- Custom made for roof pitches 1 to 25 degrees.
- Heavy gauge aluminium for superior strength.

### PRODUCT CODE: GUARDK161

Components	Description	Material	Qty
AL_GRATING 13mm	Six (6) metre Walkway Grating	Aluminium	1
GUARD_HR	Six (6) metre Handrail Profile	Aluminium	1
GUARD_KR	Six (6) metre Kneerail Profile	Aluminium	1
GUARD_HR.CAP	Handrail End Cap	Plastic MDPE	2
GUARD_KR.CAP	Kneerail End Cap	Plastic MDPE	2
GUARD_HR.BRACE	Handrail Brace	Aluminium	2
SCREW 12-14x20mm	Screw: 12-14 x 20mm Self Tapping Tek Screw	Galvanised	8
SCREW 12-14x35mm	Screw: 12-14 x 35mm Self Tapping Tek Screw	Galvanised	20
AL_GRATING DISC	Grating Disc	Aluminium	20
GUARD001.WW.POST.08	Single Levelled Walkway Post Kit *Check Pitch	Aluminium	4
GUARD001.SPRT_WELD	Walkway Support Batten - Welded	Aluminium	6
GUARD_END.Y.595	Walkway End Bar 595mm Yellow	Aluminium	2

## WALKWAY - SINGLE GUARDRAIL LEVELLED REPEATING KIT



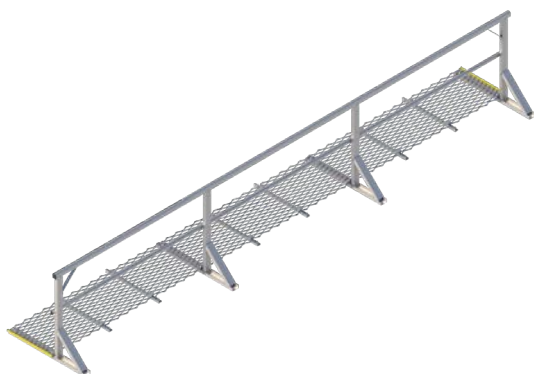
- Six (6) metre levelled walkway repeating kit for angled roof profiles.
- AS1657 requires walkways on roof pitches over seven (7) degrees to be levelled.
- Single guardrail.
- Custom made for roof pitches 1 to 25 degrees.
- Heavy gauge aluminium for superior strength.

### PRODUCT CODE: GUARDK162

Components	Description	Material	Qty
AL_GRATING 13mm	Six (6) metre Walkway Grating	Aluminium	1
GUARD_HR	Six (6) metre Handrail Profile	Aluminium	1
GUARD_KR	Six (6) metre Kneerail Profile	Aluminium	1
SCREW 12-14x20mm	Screw: 12-14 x 20mm Self Tapping Tek Screw	Galvanised	12
SCREW 12-14x35mm	Screw: 12-14 x 35mm Self Tapping Tek Screw	Galvanised	18
AL_GRATING DISC	Grating Disc	Aluminium	18
GUARD001.WW.POST.08	Single Levelled Walkway Post Kit *Check Pitch	Aluminium	3
GUARD001.SPRT_WELD	Walkway Support Batten - Welded	Aluminium	6
GUARD_JOIN.595	Walkway Joiner Bar 595mm	Aluminium	1
GUARD_HR.SPL.245	Handrail Splice 245mm	Aluminium	1
GUARD_KR.SPL.245	Kneerail Splice 245mm	Aluminium	1



## WALKWAY - SINGLE GUARDRAIL FLAT STARTING KIT



- Six (6) metre flat walkway starting kit.
- To extend walkway length add six (6) metre repeating kits use (GUARDK152).
- Single guardrail.
- Suitable for roof pitches 0 to 7 degrees. For pitches over 7 degrees use (GUARDK161).
- Heavy gauge aluminium for superior strength.

### PRODUCT CODE: GUARDK151

Components	Description	Material	Qty
AL_GRATING 13mm	Six (6) metre Walkway Grating	Aluminium	1
GUARD_HR	Six (6) metre Handrail Profile	Aluminium	1
GUARD_KR	Six (6) metre Kneerail Profile	Aluminium	1
GUARD_HR.CAP	Handrail End Cap	Plastic MDPE	2
GUARD_KR.CAP	Kneerail End Cap	Plastic MDPE	2
GUARD_HR.BRACE	Handrail Brace	Aluminium	2
SCREW 12-14x20mm	Screw: 12-14 x 20mm Self Tapping Tek Screw	Galvanised	8
SCREW 12-14x35mm	Screw: 12-14 x 35mm Self Tapping Tek Screw	Galvanised	20
AL_GRATING DISC	Grating Disc	Aluminium	20
RIVET_5x22mm	Tri-fold Rivets 5.0x22mm	Aluminium	12
FOAM-TAPE-SQUARE	Foam Tape: 40mm x 40mm x 1.6mm	EPDM	12
GUARD001.WW.POST.07	Single Walkway Post Kit *Check Pitch	Aluminium	4
GUARD_END.Y.595	Walkway End Bar 595mm Yellow	Aluminium	2
GUARD_WALK.CHL.700	Walkway Support Batten 700mm	Aluminium	6

## WALKWAY - SINGLE GUARDRAIL FLAT REPEATING KIT

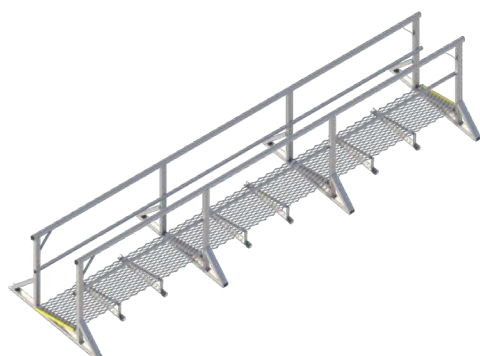


- Six (6) metre flat walkway repeating kit.
- Single guardrail.
- Suitable for roof pitches 0 to 7 degrees. For pitches over 7 degrees use (GUARDK162).
- Heavy gauge aluminium for superior strength.

### PRODUCT CODE: GUARDK152

Components	Description	Material	Qty
AL_GRATING 13mm	Six (6) metre Walkway Grating	Aluminium	1
GUARD_HR	Six (6) metre Handrail Profile	Aluminium	1
GUARD_KR	Six (6) metre Kneerail Profile	Aluminium	1
SCREW 12-14x20mm	Screw: 12-14 x 20mm Self Tapping Tek Screw	Galvanised	12
SCREW 12-14x35mm	Screw: 12-14 x 35mm Self Tapping Tek Screw	Galvanised	18
AL_GRATING DISC	Grating Disc	Aluminium	18
RIVET_5x22mm	Tri-fold Rivets 5.0x22mm	Aluminium	12
FOAM-TAPE-SQUARE	Foam Tape: 40mm x 40mm x 1.6mm	EPDM	12
GUARD001.WW.POST.07	Single Walkway Post Kit *Check Pitch	Aluminium	3
GUARD_JOIN.595	Walkway Joiner Bar 595mm	Aluminium	1
GUARD_HR.SPL.245	Handrail Splice 245mm	Aluminium	1
GUARD_KR.SPL.245	Kneerail Splice 245mm	Aluminium	1
GUARD_WALK.CHL.700	Walkway Support Batten 700mm	Aluminium	6

## WALKWAY - DOUBLE GUARDRAIL LEVELLED STARTING KIT



- Six (6) metre levelled walkway starting kit for angled roof profiles.
- Double guardrail.
- To extend walkway length add six (6) metre repeating kits use (GUARDK182).
- AS1657 requires walkways on roof pitches over seven (7) degrees to be levelled.
- Custom made for roof pitches 1 to 25 degrees.
- Heavy gauge aluminium for superior strength.

### PRODUCT CODE: GUARDK181

Components	Description	Material	Qty
AL_GRATING 13mm	Six (6) metre Walkway Grating	Aluminium	1
GUARD_HR	Six (6) metre Handrail Profile	Aluminium	2
GUARD_KR	Six (6) metre Kneerail Profile	Aluminium	2
GUARD_HR.CAP	Handrail End Cap	Plastic MDPE	4
GUARD_KR.CAP	Kneerail End Cap	Plastic MDPE	4
GUARD_HR.BRACE	Handrail Brace	Aluminium	4
SCREW 12-14x20mm	Screw: 12-14 x 20mm Self Tapping Tek Screw	Galvanised	12
SCREW 12-14x35mm	Screw: 12-14 x 35mm Self Tapping Tek Screw	Galvanised	20
AL_GRATING DISC	Grating Disc	Aluminium	20
GUARD001.WW.POST.10	Double Levelled Walkway Post Kit *Check Pitch	Aluminium	4
GUARD001.SPRT_WELD	Walkway Support Batten - Welded	Aluminium	6
GUARD_END.Y.595	Walkway End Bar 595mm Yellow	Aluminium	2

## WALKWAY - DOUBLE GUARDRAIL LEVELLED REPEATING KIT

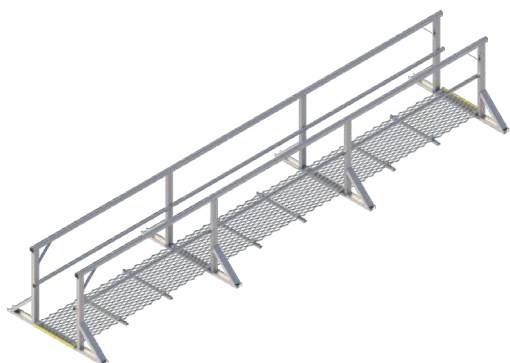


- Six (6) metre levelled walkway repeating kit for angled roof profiles.
- Double guardrail.
- AS1657 requires walkways on roof pitches over seven (7) degrees to be levelled.
- Custom made for roof pitches 1 to 25 degrees.
- Heavy gauge aluminium for superior strength.

### PRODUCT CODE: GUARDK182

Components	Description	Material	Qty
AL_GRATING 13mm	Six (6) metre Walkway Grating	Aluminium	1
GUARD_HR	Six (6) metre Handrail Profile	Aluminium	2
GUARD_KR	Six (6) metre Kneerail Profile	Aluminium	2
SCREW 12-14x20mm	Screw: 12-14 x 20mm Self Tapping Tek Screw	Galvanised	20
SCREW 12-14x35mm	Screw: 12-14 x 35mm Self Tapping Tek Screw	Galvanised	18
AL_GRATING DISC	Grating Disc	Aluminium	18
GUARD001.WW.POST.10	Double Levelled Walkway Post Kit *Check Pitch	Aluminium	3
GUARD001.SPRT_WELD	Walkway Support Batten - Welded	Aluminium	6
GUARD_JOIN.595	Walkway Joiner Bar 595mm	Aluminium	1
GUARD_HR.SPL.245	Handrail Splice 245mm	Aluminium	2
GUARD_KR.SPL.245	Kneerail Splice 245mm	Aluminium	2

## WALKWAY - DOUBLE GUARDRAIL FLAT STARTING KIT

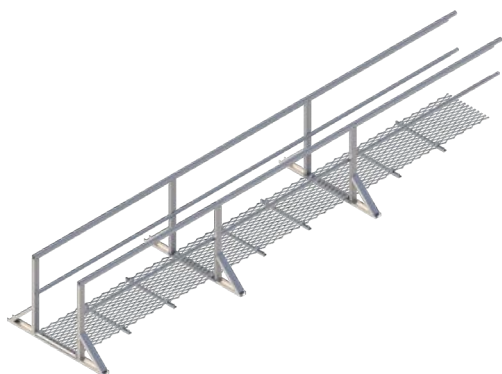


- Six (6) metre flat walkway starting kit.
- To extend walkway length add six (6) metre repeating kits use (GUARDK172).
- Double guardrail.
- Suitable for roof pitches 0 to 7 degrees. For pitches over 7 degrees use (GUARDK181).
- Heavy gauge aluminium for superior strength.

### PRODUCT CODE: GUARDK171

Components	Description	Material	Qty
AL_GRATING 13mm	Six (6) metre Walkway Grating	Aluminium	1
GUARD_HR	Six (6) metre Handrail Profile	Aluminium	2
GUARD_KR	Six (6) metre Kneerail Profile	Aluminium	2
GUARD_HR.CAP	Handrail End Cap	Plastic MDPE	4
GUARD_KR.CAP	Kneerail End Cap	Plastic MDPE	4
GUARD_HR.BRACE	Handrail Brace	Aluminium	4
SCREW 12-14x20mm	Screw: 12-14 x 20mm Self Tapping Tek Screw	Galvanised	12
SCREW 12-14x35mm	Screw: 12-14 x 35mm Self Tapping Tek Screw	Galvanised	20
AL_GRATING DISC	Grating Disc	Aluminium	20
RIVET_5x22mm	Tri-fold Rivets 5.0x22mm	Aluminium	12
FOAM-TAPE-SQUARE	Foam Tape: 40mm x 40mm x 1.6mm	EPDM	12
GUARD001.WW.POST.09	Double Walkway Post Kit *Check Pitch	Aluminium	4
GUARD_END.Y.595	Walkway End Bar 595mm Yellow	Aluminium	2
GUARD_WALK.CHL.700	Walkway Support Batten 700mm	Aluminium	6

## WALKWAY - DOUBLE GUARDRAIL FLAT REPEATING KIT



- Six (6) metre flat walkway repeating kit.
- Double guardrail.
- Suitable for roof pitches 0 to 7 degrees. For pitches over 7 degrees use (GUARDK182).
- Heavy gauge aluminium for superior strength.

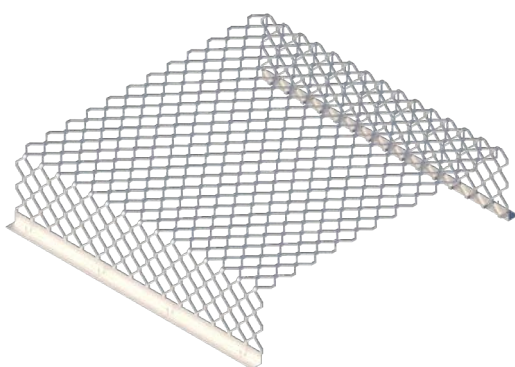
### PRODUCT CODE: GUARDK172

Components	Description	Material	Qty
AL_GRATING 13mm	Six (6) metre Walkway Grating	Aluminium	1
GUARD_HR	Six (6) metre Handrail Profile	Aluminium	2
GUARD_KR	Six (6) metre Kneerail Profile	Aluminium	2
SCREW 12-14x20mm	Screw: 12-14 x 20mm Self Tapping Tek Screw	Galvanised	20
SCREW 12-14x35mm	Screw: 12-14 x 35mm Self Tapping Tek Screw	Galvanised	18
AL_GRATING DISC	Grating Disc	Aluminium	18
RIVET_5x22mm	Tri-fold Rivets 5.0x22mm	Aluminium	12
FOAM-TAPE-SQUARE	Foam Tape: 40mm x 40mm x 1.6mm	EPDM	12
GUARD001.WW.POST.09	Double Walkway Post Kit *Check Pitch	Aluminium	3
GUARD_JOIN.595	Walkway Joiner Bar 595mm	Aluminium	1
GUARD_HR.SPL.245	Handrail Splice 245mm	Aluminium	2
GUARD_KR.SPL.245	Kneerail Splice 245mm	Aluminium	2
GUARD_WALK.CHL.700	Walkway Support Batten 700mm	Aluminium	6





## SKYLIGHT PROTECTOR - BENT



- Bent mesh used to cover Skylights for protection.
- Available in three (3) widths - 750mm, 920mm and 1250mm.
- Custom height - maximum height 300mm.
- Custom length - maximum length 1450mm.
- Custom fabrication - request lead time.
- Heavy gauge aluminium for superior strength.

### PRODUCT CODE: GUARD\_SKYB.750.2050

Components	Description	Material	Qty
GUARD_SKYB.750.2050.01	Skylight Protector Bent 750x2050x2050mm	Aluminium	1
RIVET_5x22mm	Rivet: 5 x 22mm	Aluminium	8
FOAM-TAPE-SQUARE	Foam Tape: 40x40x1.6mm	EPDM	8

### PRODUCT CODE: GUARD\_SKYB.920.2050

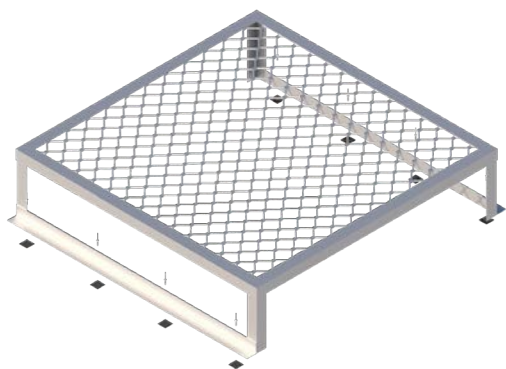
Components	Description	Material	Qty
GUARD_SKYB.920.2050.01	Skylight Protector Bent 920x2050x2050mm	Aluminium	1
RIVET_5x22mm	Rivet: 5 x 22mm	Aluminium	8
FOAM-TAPE-SQUARE	Foam Tape: 40x40x1.6mm	EPDM	8

### PRODUCT CODE: GUARD\_SKYB.1250.2050

Components	Description	Material	Qty
GUARD_SKYB.1250.2050.01	Skylight Protector Bent 1250x2050x2050mm	Aluminium	1
RIVET_5x22mm	Rivet: 5 x 22mm	Aluminium	8
FOAM-TAPE-SQUARE	Foam Tape: 40x40x1.6mm	EPDM	8



## SKYLIGHT PROTECTOR - FRAMED KIT



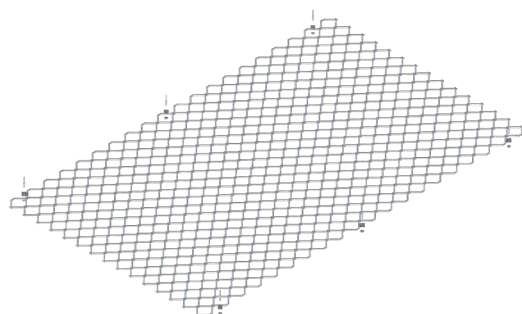
- Framed mesh used to cover Skylights for protection.
- Custom sizes - maximum size 1250mm x 1250mm x 300mm.
- Custom fabrication - request lead time.
- Heavy gauge aluminium for superior strength.

### PRODUCT CODE: GUARD\_SKYF.1250.1250

Components	Description	Material	Qty
GUARD_SKYF.1250.1250.01	Skylight Protector Framed 1250x1250x300mm	Aluminium	1
RIVET_5x22mm	Rivet: 5 x 22mm	Aluminium	8
FOAM-TAPE-SQUARE	Foam Tape: 40x40x1.6mm	EPDM	8

## SKYLIGHT PROTECTOR - FLAT

- Flat mesh used to cover Skylights for protection.
- Heavy gauge aluminium for superior strength.



### PRODUCT CODE: GUARD\_SKYL.920.2050

Components	Description	Material	Qty
GUARD_SKYL.920.2050.01	Diamond Grill Mesh 920x2050mm	Aluminium	1
GUARD_SKY.U_CLIP	U-Clip	316SS	6
GUARD_SKY.WASHER	Washer: 3/16x5/8x1.5mm	Neoprene	6
RIVET_5x22mm	Rivet: 5 x 22mm	Aluminium	6

### PRODUCT CODE: GUARD\_SKYL.920.2450

Components	Description	Material	Qty
GUARD_SKYL.920.2450.01	Diamond Grill Mesh 920x2450mm	Aluminium	1
GUARD_SKY.U_CLIP	U-Clip	316SS	6
GUARD_SKY.WASHER	Washer: 3/16x5/8x1.5mm	Neoprene	6
RIVET_5x22mm	Rivet: 5 x 22mm	Aluminium	6

### PRODUCT CODE: GUARD\_SKYL.920.3125

Components	Description	Material	Qty
GUARD_SKYL.920.3125.01	Diamond Grill Mesh 920x3125mm	Aluminium	1
GUARD_SKY.U_CLIP	U-Clip	316SS	6
GUARD_SKY.WASHER	Washer: 3/16x5/8x1.5mm	Neoprene	6
RIVET_5x22mm	Rivet: 5 x 22mm	Aluminium	6

### PRODUCT CODE: GUARD\_SKYL.1250.1250

Components	Description	Material	Qty
GUARD_SKYL.1250.1250.01	Diamond Grill Mesh 1250x1250mm	Aluminium	1
GUARD_SKY.U_CLIP	U-Clip	316SS	6
GUARD_SKY.WASHER	Washer: 3/16x5/8x1.5mm	Neoprene	6
RIVET_5x22mm	Rivet: 5 x 22mm	Aluminium	6

### PRODUCT CODE: GUARD\_SKYL.1250.2450

Components	Description	Material	Qty
GUARD_SKYL.1250.2450.01	Diamond Grill Mesh 1250x2450mm	Aluminium	1
GUARD_SKY.U_CLIP	U-Clip	316SS	6
GUARD_SKY.WASHER	Washer: 3/16x5/8x1.5mm	Neoprene	6
RIVET_5x22mm	Rivet: 5 x 22mm	Aluminium	6

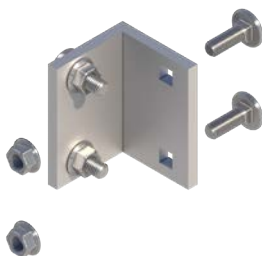
### PRODUCT CODE: GUARD\_SKYL.1250.3125

Components	Description	Material	Qty
GUARD_SKYL.1250.3125.01	Diamond Grill Mesh 1250x3125mm	Aluminium	1
GUARD_SKY.U_CLIP	U-Clip	316SS	6
GUARD_SKY.WASHER	Washer: 3/16x5/8x1.5mm	Neoprene	6
RIVET_5x22mm	Rivet: 5 x 22mm	Aluminium	6





## TOE BOARD CORNER JOINER KIT

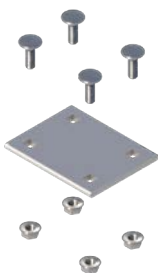


- Toe Board Corner Kit.

### PRODUCT CODE: GUARD\_TOE.CNR

Components	Description	Material	Qty
GUARD_TOE.CNR.01	Toe Board Corner	Aluminium	1
SCREW 12-14x20mm	Screw: 12-14x20mm Self Tapping	Galvanised	2
BOLT-M8x20mm Cup HD	Bolt: M8 x 20mm Cup Head	316SS	4
NUT M8 Flanged_316	Flanged Nut: M8	316SS	4

## TOE BOARD JOINER KIT

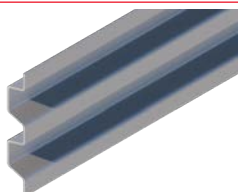


- Toe Board Joiner Kit.

### PRODUCT CODE: GUARD\_TOE.JOIN

Components	Description	Material	Qty
GUARD_TOE.JOIN.01	Toe Board Joiner	Aluminium	1
BOLT-M8x20mm Cup HD	Bolt: M8 x 20mm Cup Head	316SS	4
NUT M8 Flanged_316	Flanged Nut: M8	316SS	4

## TOE BOARD RAIL



- Toe Board Rail.

### PRODUCT CODE: AL\_RUB\_RAIL

Components	Description	Material	Qty
AL_RUB_RAIL	Toe Board Rail	Aluminium	1

## HANDRAIL SPLICE KIT

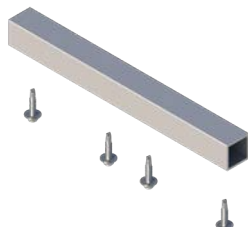


- Handrail Splice Kit used to join Guardrail Handrail.

### PRODUCT CODE: GUARD\_HR.SPL.245

Components	Description	Material	Qty
GUARD_HR.SPL.245	Handrail Splice for Guardrail	Aluminium	1
SCREW 12-14x20mm	Screw: 12-14x20mm Self Tapping	Galvanised	4

## KNEERAIL SPLICE KIT



- Kneerail Splice Kit used to join Guardrail Handrail.

### PRODUCT CODE: GUARD\_KR.SPL.245

Components	Description	Material	Qty
GUARD_KR.SPL.245	Kneerail Splice for Guardrail	Aluminium	1
SCREW 12-14x20mm	Screw: 12-14x20mm Self Tapping	Galvanised	4

## HANDRAIL END CAP



- Handrail End Cap is used to seal off Handrail ends.

### PRODUCT CODE: GUARD\_HR.CAP

Components	Description	Material	Qty
GUARD_HR.CAP	Handrail End Cap	Plastic MDPE	1

## KNEERAIL END CAP



- Kneerail End Cap is used to seal off Kneerail ends.

### PRODUCT CODE: GUARD\_KR.CAP

Components	Description	Material	Qty
GUARD_KR.CAP	Kneerail End Cap	Plastic MDPE	1

## HANDRAIL ELBOW JOINT KIT



- Handrail Elbow is used to join corners together.

### PRODUCT CODE: GUARD\_HR.ELBW

Components	Description	Material	Qty
GUARD_HR.ELBW_BUSH	Plastic Handrail Bush	Plastic MDPE	2
GUARD_HR.ELBW_JOIN	Cast Handrail Elbow Join	Aluminium	2
SCREW 12-14x20mm	Screw: 12-14x20mm Self Tapping	Galvanised	2
BOLT-M6x40mm-SS B/H	Bolt: M6x40mm Set Screw Buttonhead	316SS	1
NUT NYLOC M6_316	Nyloc Nut: M6	316SS	1

## KNEERAIL ELBOW JOINT KIT



- Kneerail Elbow is used to join corners together.

### PRODUCT CODE: GUARD\_KR.ELBW

Components	Description	Material	Qty
GUARD_KR.ELBW_BUSH	Plastic Kneerail Bush	Plastic MDPE	2
GUARD_KR.ELBW_JOIN	Cast Kneerail Elbow Join	Aluminium	2
SCREW 12-14x20mm	Screw: 12-14x20mm Self Tapping	Galvanised	2
BOLT-M6x40mm-SS B/H	Bolt: M6x40mm Set Screw Buttonhead	316SS	1
NUT NYLOC M6_316	Nyloc Nut: M6	316SS	1

## HANDRAIL

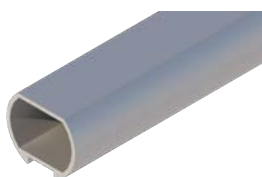


- Handrail Profile: six (6) metres.

### PRODUCT CODE: GUARD\_HR

Components	Description	Material	Qty
GUARD_HR	Handrail: six (6) metres	Aluminium	1

## KNEERAIL

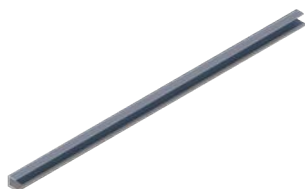


- Kneerail Profile: six (6) metres.

### PRODUCT CODE: GUARD\_KR

Components	Description	Material	Qty
GUARD_KR	Kneerail: six (6) metres	Aluminium	1

## WALKWAY END BAR

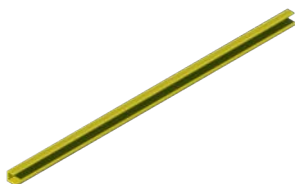


- Walkway End Bar 595mm.

### PRODUCT CODE: GUARD\_END.595

Components	Description	Material	Qty
GUARD_END.595	Walkway End Bar 595mm	Aluminium	1

## WALKWAY END BAR - YELLOW

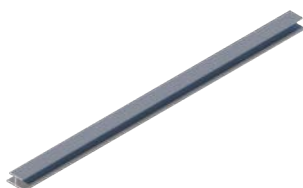


- Walkway End Bar Yellow 595mm.

### PRODUCT CODE: GUARD\_END.Y.595

Components	Description	Material	Qty
GUARD_END.Y.595	Walkway End Bar Yellow 595mm	Aluminium	1

## WALKWAY JOINER

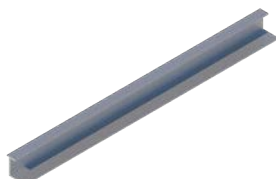


- Walkway Joiner Bar 595mm.

### PRODUCT CODE: GUARD\_JOIN.595

Components	Description	Material	Qty
GUARD_JOIN.595	Walkway Joiner Bar 595mm	Aluminium	1

## WALKWAY SUPPORT CHANNEL



- Walkway Support Channel.

### PRODUCT CODE: GUARD\_WALK.CHL.700

Components	Description	Material	Qty
GUARD_WALK.CHL.700	Walkway Support Channel	Aluminium	1

## WALKWAY CLEAT



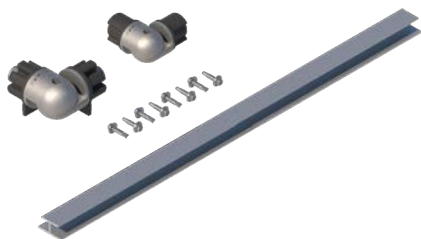
- Walkway Cleat 595mm.

### PRODUCT CODE: GUARD\_CLEAT.595

Components	Description	Material	Qty
GUARD_CLEAT.595	Walkway Cleat 595mm	Aluminium	1
SCREW 12-14x20mm	Screw: 12-14x20mm Self Tapping	Galvanised	2

## GUARDRAIL CORNER KIT (ONE CORNER SET)

- Guardrail Corner Kit (one corner set).

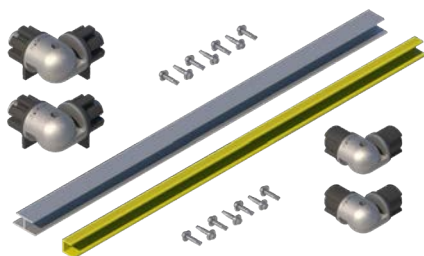


### PRODUCT CODE: GUARDK\_CNR.01

Components	Description	Material	Qty
GUARD_JOIN.595	Guardrail Join Bar	Aluminium	1
GUARD_END.595	Guardrail Yellow End Bar	Aluminium	0
GUARD_HR.ELBW.01	Handrail Elbow	Plastic MDPE/Aluminium	1
GUARD_KR.ELBW.01	Kneerail Elbow	Plastic MDPE/Aluminium	1
SCREW 12-14x20mm	Screw: 12-14x20mm Self Tapping	Galvanised	8

## GUARDRAIL CORNER KIT (TWO CORNER SETS)

- Guardrail Corner Kit (two corner sets).

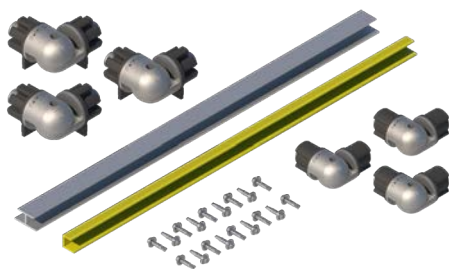


### PRODUCT CODE: GUARDK\_CNR.02

Components	Description	Material	Qty
GUARD_JOIN.595	Guardrail Join Bar	Aluminium	1
GUARD_END.595	Guardrail Yellow End Bar	Aluminium	1
GUARD_HR.ELBW.01	Handrail Elbow	Plastic MDPE/Aluminium	2
GUARD_KR.ELBW.01	Kneerail Elbow	Plastic MDPE/Aluminium	2
SCREW 12-14x20mm	Screw: 12-14x20mm Self Tapping	Galvanised	14

## GUARDRAIL CORNER KIT (THREE CORNER SETS)

- Guardrail Corner Kit (three corner sets).

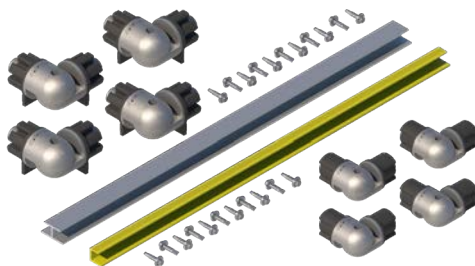


### PRODUCT CODE: GUARDK\_CNR.03

Components	Description	Material	Qty
GUARD_JOIN.595	Guardrail Join Bar	Aluminium	1
GUARD_END.595	Guardrail Yellow End Bar	Aluminium	1
GUARD_HR.ELBW.01	Handrail Elbow	Plastic MDPE/Aluminium	3
GUARD_KR.ELBW.01	Kneerail Elbow	Plastic MDPE/Aluminium	3
SCREW 12-14x20mm	Screw: 12-14x20mm Self Tapping	Galvanised	18

## GUARDRAIL CORNER KIT (FOUR CORNER SETS)

- Guardrail Corner Kit (four corner sets).



### PRODUCT CODE: GUARDK\_CNR.04

Components	Description	Material	Qty
GUARD_JOIN.595	Guardrail Join Bar	Aluminium	1
GUARD_END.595	Guardrail Yellow End Bar	Aluminium	1
GUARD_HR.ELBW.01	Handrail Elbow	Plastic MDPE/Aluminium	4
GUARD_KR.ELBW.01	Kneerail Elbow	Plastic MDPE/Aluminium	4
SCREW 12-14x20mm	Screw: 12-14x20mm Self Tapping	Galvanised	22

## HANDRAIL BRACE

- Handrail Brace.



### PRODUCT CODE: GUARD\_HR.BRACE

Components	Description	Material	Qty
GUARD_HR.BRACE	Handrail Brace	Aluminium	1
SCREW 12-14x20mm	Screw: 12-14x20mm Self Tapping	Galvanised	2



## 75 DEGREE LADDER WITH TOP PLATFORM & HANDRAILS

FLAT SURFACE TO ROOF SHEETING		LADERK002.011	LADERK002.012	LADERK002.013
Product Code	Description	1050mm	2200mm	3360mm
LADER002.LHD	Ladder Head: 2400mm, 5 Rung 1324mm 75 degrees	1	1	1
LADER002.SEC.4	Ladder Section: 1200mm (4 rung)	0	1	0
LADER002.SEC.8	Ladder Section: 2400mm (8 rung)	0	0	1
LADER002.SPL	Splice Joint: 600mm (one piece)	0	2	2
LADER002.BASE.ANGLE_2x350	Ladder Base Support Angle: 2x350mm	1	1	1
LADER002.BRK250	Ladder Fixing Bracket: 250mm	1	1	1
LADER002.BRK600-1000	Ladder Fixing Bracket: 600-1000mm	0	0	1
LADER002.HR.75	Handrail Set: 75 degrees (2 arms)	1	1	1
LADER002.PLT.TOP	Platform: Adjustable Top (Required if exit area not level)	1	1	1
LADER002.CAP	Ladder Cap	2	2	2
LADER002.SIGN	Ladder Compliance Sign	1	1	1

### ADDITIONAL COMPONENTS NOT INCLUDED IN ABOVE

FLAT SURFACE TO ROOF SHEETING WITH EXTENSION FEET		LADERK002.011 +FEET	LADERK002.012 +FEET	LADERK002.013 +FEET
		1320mm	2470mm	3630mm
LADER002.FOOT.75	Ladder Foot: 75 degrees	2	2	2

ROOF SHEETING TO ROOF SHEETING (Platform installed in front of ladder)		LADERK002.011 +BASE	LADERK002.012 +BASE	LADERK002.013 +BASE
		1170mm	2330mm	3490mm
LADER002.PLT.BASE	Platform: Adjustable Base (Required if entry area not level)	1	1	1

ROOF SHEETING TO ROOF SHEETING (Ladder installed on top of platform)		LADERK002.011 +FOOTING	LADERK002.012 +FOOTING	LADERK002.013 +FOOTING
		1110mm	2270mm	3430mm
LADER002.PLT.FOOT	Platform: Footing Landing (Required if entry area not level)	1	1	1

FLAT SURFACE TO ROOF SHEETING WITH LOCKABLE DOOR			LADERK002.012 +DOOR	LADERK002.013 +DOOR
LADER002.DOOR	Ladder Access Lockable Door Kit		1	1

### FLAT SURFACE TO ROOF SHEETING

Below Drawing: LADERK002.012



### ROOF SHEETING TO ROOF SHEETING

Below Drawing: LADERK002.012 + BASE



## 75 DEGREE PARAPET LADDER WITH PLATFORM & HANDRAILS

FLAT SURFACE TO ROOF SHEETING		LADERK002.021	LADERK002.022	LADERK002.023
Product Code	Description	1050mm	2200mm	3360mm
LADER002.LHD	Ladder Head: 2400mm, 5 Rung 1324mm 75 degrees	2	2	2
LADER002.SEC.4	Ladder Section: 1200mm (4 rung)	0	1	0
LADER002.SEC.8	Ladder Section: 2400mm (8 rung)	0	0	1
LADER002.SPL	Splice Joint: 600mm (one piece)	0	2	2
LADER002.BASE.ANGLE_2x350	Ladder Base Support Angle: 2x350mm	2	2	2
LADER002.BRK250	Ladder Fixing Bracket: 250mm	1	1	1
LADER002.BRK600-1000	Ladder Fixing Bracket: 600-1000mm	0	0	1
LADER002.HR.PRPT.1M	Handrail Set: Parapet 1000mm	1	1	1
LADER002.PLT.1M	Platform: Parapet Landing 1000mm	1	1	1
LADER002.PLT.BASE	Platform: Adjustable Base	1	1	1
LADER002.CAP	Ladder Cap	4	4	4
LADER002.SIGN	Ladder Compliance Sign	1	1	1

### ADDITIONAL COMPONENTS NOT INCLUDED IN ABOVE

FLAT SURFACE TO ROOF SHEETING WITH EXTENSION FEET		LADERK002.021 +FEET	LADERK002.022 +FEET	LADERK002.023 +FEET
		1320mm	2470mm	3630mm
LADER002.FOOT.75	Ladder Foot: 75 degrees	2	2	2

ROOF SHEETING TO ROOF SHEETING (Platform installed in front of ladder)		LADERK002.021 +BASE	LADERK002.022 +BASE	LADERK002.023 +BASE
		1170mm	2330mm	3490mm
LADER002.PLT.BASE	Platform: Adjustable Base (Required if entry area not level)	1	1	1

ROOF SHEETING TO ROOF SHEETING (Ladder installed on top of platform)		LADERK002.021 +FOOTING	LADERK002.022 +FOOTING	LADERK002.023 +FOOTING
		1110mm	2270mm	3430mm
LADER002.PLT.FOOT	Platform: Footing Landing (Required if entry area not level)	1	1	1

FLAT SURFACE TO ROOF SHEETING WITH LOCKABLE DOOR			LADERK002.022 +DOOR	LADERK002.023 +DOOR
LADER002.DOOR	Ladder Access Lockable Door Kit		1	1

### FLAT SURFACE TO ROOF SHEETING

Below Drawing: LADERK002.022



### ROOF SHEETING TO ROOF SHEETING

Below Drawing: LADERK002.022 + BASE



## 75 DEGREE LADDER WITH TOP PLATFORM & CAGE

FLAT SURFACE TO ROOF SHEETING		LADERK002.041	LADERK002.042	LADERK002.043
Product Code	Description	2200mm	3360mm	4510mm
LADER002.LHD	Ladder Head: 2400mm, 5 Rung 1324mm 75 degrees	1	1	1
LADER002.SEC.4	Ladder Section: 1200mm (4 rung)	1	0	1
LADER002.SEC.8	Ladder Section: 2400mm (8 rung)	0	1	1
LADER002.SPL	Splice Joint: 600mm (one piece)	2	2	4
LADER002.BASE.ANGLE_2x350	Ladder Base Support Angle: 2x350mm	1	1	1
LADER002.BRK250	Ladder Fixing Bracket: 250mm	1	1	1
LADER002.BRKADJ.600-1000	Ladder Fixing Bracket: 600-1000mm	0	1	1
LADER002.CAGE.2	Ladder Cage: (0.01m to 2.0m)	1	0	0
LADER002.CAGE.3	Ladder Cage: (2.01m to 3.0m)	0	1	0
LADER002.CAGE.3.1+2	Ladder Cage: (2.01m to 3.0m) Kit (1m+2m+Joiner)	0	0	0
LADER002.CAGE.4	Ladder Cage: (3.01m to 4.0m)	0	0	1
LADER002.CAGE.4.2+2	Ladder Cage: (3.01m to 4.0m) Kit (2m+2m+Joiner)	0	0	0
LADER002.CAGE.5	Ladder Cage: (4.01m to 5.0m)	0	0	0
LADER002.CAGE.5.2+2	Ladder Cage: (4.01m to 5.0m) Kit (2m+3m+Joiner)	0	0	0
LADER002.CAGE.GATE	Lockable Ladder Cage Door	1	1	1
LADER002.HR.75	Handrail Set: 75 degrees (2 arms)	1	1	1
LADER002.PLT.TOP	Platform: Top (Required if exit area not level)	1	1	1
LADER002.CAP	Ladder Cap	2	2	2
LADER002.SIGN	Ladder Compliance Sign	1	1	1

### ADDITIONAL COMPONENTS NOT INCLUDED IN ABOVE

FLAT SURFACE TO ROOF SHEETING WITH EXTENSION FEET		LADERK002.041 +FEET	LADERK002.042 +FEET	LADERK002.043 +FEET
		2470mm	3630mm	4790mm
LADER002.FOOT.75	Ladder Foot: 75 degrees	2	2	2

ROOF SHEETING TO ROOF SHEETING (Platform installed in front of ladder)		LADERK002.041 +BASE	LADERK002.042 +BASE	LADERK002.043 +BASE
		2330mm	3490mm	4640mm
LADER002.PLT.BASE	Platform: Adjustable Base (Required if entry area not level)	1	1	n/a

ROOF SHEETING TO ROOF SHEETING (Ladder installed on top of platform)		LADERK002.041 +FOOTING	LADERK002.042 +FOOTING	LADERK002.043 +FOOTING
		2270mm	3430mm	4580mm
LADER002.PLT.FOOT	Platform: Footing Landing (Required if entry area not level)	1	1	1

## 75 DEGREE PARAPET LADDER WITH TOP PLATFORM & CAGE

LADERK002.044	LADERK002.045 (2 PIECE CAGE)	LADERK002.046 (2 PIECE CAGE)	LADERK002.047 (2 PIECE CAGE)
5670mm	3360mm	4510mm	5670mm
1	1	1	1
0	0	1	0
2	1	1	2
4	2	4	4
1	1	1	1
1	1	1	1
1	1	1	1
0	0	0	0
0	0	0	0
0	1	0	0
0	0	0	0
0	0	1	0
1	0	0	0
0	0	0	1
1	1	1	1
1	1	1	1
1	1	1	1
2	2	2	2
1	1	1	1

LADERK002.044 +FEET	LADERK002.045 +FEET	LADERK002.046 +FEET	LADERK002.047 +FEET
5950mm	3630mm	4790mm	5950mm
2	2	2	2

LADERK002.044 +BASE	LADERK002.045 +BASE	LADERK002.046 +BASE	LADERK002.047 +BASE
5800mm	3490mm	4640mm	5800mm
n/a	1	n/a	n/a

LADERK002.044 +FOOTING	LADERK002.045 +FOOTING	LADERK002.046 +FOOTING	LADERK002.047 +FOOTING
5740mm	3430mm	4580mm	5740mm
1	1	1	1

### FLAT SURFACE TO ROOF SHEETING

Below Drawing: LADERK002.042



### ROOF SHEETING TO ROOF SHEETING

Below Drawing: LADERK002.042 + BASE





## 75 DEGREE PARAPET LADDER WITH PLATFORM & CAGE

FLAT SURFACE TO ROOF SHEETING		LADERK002.051	LADERK002.052	LADERK002.053
Product Code	Description	2200mm	3360mm	4510mm
LADER002.LHD	Ladder Head: 2400mm, 5 Rung 1324mm 75 degrees	2	2	2
LADER002.SEC.4	Ladder Section: 1200mm (4 rung)	1	0	1
LADER002.SEC.8	Ladder Section: 2400mm (8 rung)	0	1	1
LADER002.SPL	Splice Joint: 600mm (one piece)	2	2	4
LADER002.BASE.ANGLE_2x350	Ladder Base Support Angle: 2x350mm	2	2	2
LADER002.BRK250	Ladder Fixing Bracket: 250mm	1	1	1
LADER002.BRKADJ.600-1000	Ladder Fixing Bracket: 600-1000mm	0	1	1
LADER002.HR.PRPT.1M	Handrail Set: Parapet 1000mm	1	1	1
LADER002.PLT.1M	Platform: Parapet Landing 1000mm	1	1	1
LADER002.PLT.BASE	Platform: Base (Required if exit area not level)	1	1	1
LADER002.CAGE.2	Ladder Cage: (0.01m to 2.0m)	1	0	0
LADER002.CAGE.3	Ladder Cage: (2.01m to 3.0m)	0	1	0
LADER002.CAGE.3.1+2	Ladder Cage: (2.01m to 3.0m) Kit (1m+2m+Joiner)	0	0	0
LADER002.CAGE.4	Ladder Cage: (3.01m to 4.0m)	0	0	1
LADER002.CAGE.4.2+2	Ladder Cage: (3.01m to 4.0m) Kit (2m+2m+Joiner)	0	0	0
LADER002.CAGE.5	Ladder Cage: (4.01m to 5.0m)	0	0	0
LADER002.CAGE.5.2+3	Ladder Cage: (4.01m to 5.0m) Kit (2m+3m+Joiner)	0	0	0
LADER002.CAGE.GATE	Ladder Access Gate for Cage	1	1	1
LADER002.CAP	Ladder Cap	4	4	4
LADER002.SIGN	Ladder Compliance Sign	1	1	1

### ADDITIONAL COMPONENTS NOT INCLUDED IN ABOVE

FLAT SURFACE TO ROOF SHEETING WITH EXTENSION FEET		LADERK002.051 +FEET	LADERK002.052 +FEET	LADERK002.053 +FEET
		2470mm	3630mm	4790mm
LADER002.FOOT.75	Ladder Foot: 75 degrees	2	2	2

ROOF SHEETING TO ROOF SHEETING (Platform installed in front of ladder)		LADERK002.051 +BASE	LADERK002.052 +BASE	LADERK002.053 +BASE
		2330mm	3490mm	4640mm
LADER002.PLT.BASE	Platform: Adjustable Base (Required if entry area not level)	1	1	N/A

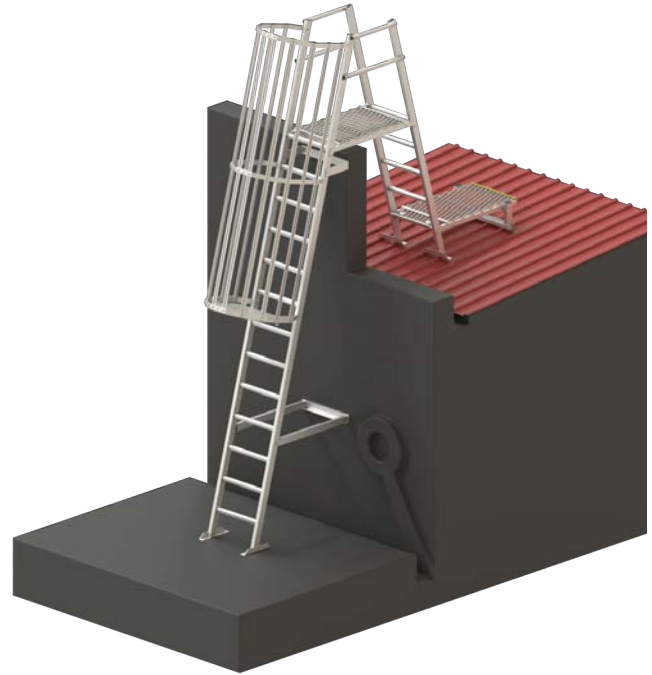
ROOF SHEETING TO ROOF SHEETING (Ladder installed on top of platform)		LADERK002.051 +FOOTING	LADERK002.052 +FOOTING	LADERK002.053 +FOOTING
		2270mm	3430mm	4580mm
LADER002.PLT.FOOT	Platform: Footing Landing (Required if entry area not level)	1	1	1

## 75 DEGREE PARAPET LADDER WITH PLATFORM & CAGE

LADERK002.054	LADERK002.055 (2 PIECE CAGE)	LADERK002.056 (2 PIECE CAGE)	LADERK002.057 (2 PIECE CAGE)
5670mm	3360mm	4510mm	5670mm
2	2	2	2
0	0	1	0
2	1	1	2
4	2	4	4
2	2	2	2
1	1	1	1
1	1	1	1
1	1	1	1
1	1	1	1
0	0	0	0
0	0	0	0
0	1	0	0
0	0	0	0
0	0	1	0
1	0	0	0
0	0	0	1
1	1	1	1
4	4	4	4
1	1	1	1
LADERK002.054 +FEET	LADERK002.055 +FEET	LADERK002.056 +FEET	LADERK002.057 +FEET
5950mm	3630mm	4790mm	5950mm
2	2	2	2
LADERK002.054 +BASE	LADERK002.055 +BASE	LADERK002.056 +BASE	LADERK002.057 +BASE
5800mm	3490mm	4640mm	5800mm
N/A	1	N/A	N/A
LADERK002.054 +FOOTING	LADERK002.055 +FOOTING	LADERK002.056 +FOOTING	LADERK002.057 +FOOTING
5740mm	3430mm	4580mm	5740mm
1	1	1	1

### FLAT SURFACE TO ROOF SHEETING

Below Drawing: LADERK002.052



### ROOF SHEETING TO ROOF SHEETING

Below Drawing: LADERK002.052 + BASE



## 75 DEGREE INTERNAL ACCESS

FLAT SURFACE TO ROOF SHEETING		LADERK002.031	LADERK002.032
Product Code	Description	2180mm	3340mm
LADER002.SEC.4	Ladder Section: 1200mm (4 rung)	0	1
LADER002.SEC.8	Ladder Section: 2400mm (8 rung)	1	1
LADER002.SPL	Splice Joint: 600mm (one piece)	0	2
LADER002.BASE.ANGLE_2x350	Ladder Base Support Angle: 2x350mm	1	1
LADER002.BRK250	Ladder Fixing Bracket: 250mm	1	1
LADER002.BRKADJ.600-1000	Ladder Fixing Bracket: 600-1000mm	0	1
LADER002.HATCH_SM	Hatch: Roof Mount Guardrail Kit	1	1
LADER002.CAP	Ladder Cap	2	2
LADER002.SIGN	Ladder Compliance Sign	1	1

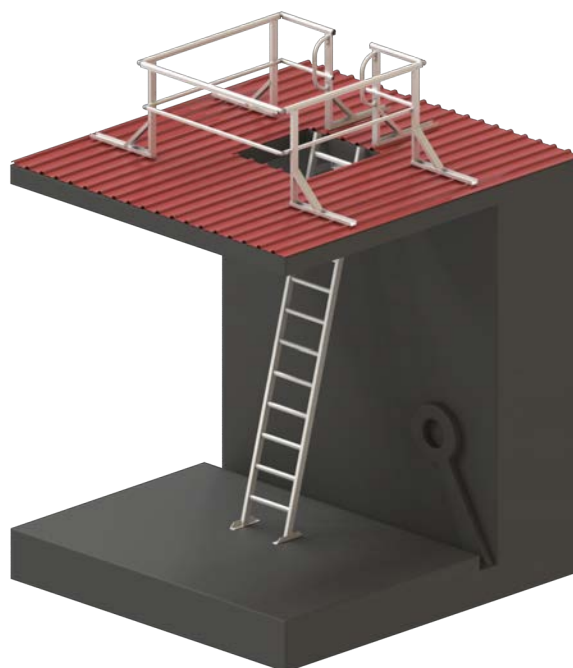
### ADDITIONAL COMPONENTS NOT INCLUDED IN ABOVE

FLAT SURFACE TO ROOF SHEETING WITH EXTENSION FEET		LADERK002.031 + FEET	LADERK002.032 + FEET
		2450mm	3610mm
LADER002.FOOT.75	Ladder Foot: 75 degrees	2	2

FLAT SURFACE TO ROOF SHEETING WITH LOCKABLE DOOR		LADERK002.031 + DOOR	LADERK002.032 + DOOR
LADER002.DOOR	Ladder Door	1	1

### FLAT SURFACE TO ROOF SHEETING

Below Drawing: LADERK002.032 + HATCH\_SM



## 75 DEGREE LADDER WITH CAGE FOR INTERNAL ACCESS

FLAT SURFACE TO ROOF SHEETING		LADERK002.071	LADERK002.072	LADERK002.073	LADERK002.074 (2 PIECE CAGE)	LADERK002.075 (2 PIECE CAGE)
Product Code	Description	3340mm	4500mm	5660mm	4500mm	5660mm
LADER002.SEC.4	Ladder Section: 1200mm (4 rung)	1	0	1	0	1
LADER002.SEC.8	Ladder Section: 2400mm (8 rung)	1	2	2	2	2
LADER002.SPL	Splice Joint: 600mm (one piece)	2	2	4	2	4
LADER002.BASE.ANGLE_2x350	Ladder Base Support Angle: 2x350mm	1	1	1	1	1
LADER002.BRK250	Ladder Fixing Bracket: 250mm	1	1	1	1	1
LADER002.BRKADJ.600-1000	Ladder Fixing Bracket: 600-1000mm	1	1	1	1	1
LADER002.HATCH_SM	Hatch: Roof Mount Guardrail Kit	1	1	1	1	1
LADER002.CAGE.2	Ladder Cage: (1.01 to 2.0 metres)	1	0	0	0	0
LADER002.CAGE.3	Ladder Cage: (2.01 to 3.0 metres)	0	1	0	0	0
LADER002.CAGE.3.1+2	Ladder Cage: (2.01 to 3.0 metres) (1m+2m)	0	0	0	1	0
LADER002.CAGE.4	Ladder Cage: (3.01 to 4.0 metres)	0	0	1	0	0
LADER002.CAGE.4.2+2	Ladder Cage: (3.01 to 4.0 metres) (2m+2m)	0	0	0	0	1
LADER002.CAGE.GATE	Lockable Ladder Cage Gate	1	1	1	1	1
LADER002.CAP	Ladder Cap	2	2	2	2	2
LADER002.SIGN	Ladder Compliance Sign	1	1	1	1	1

### ADDITIONAL COMPONENTS NOT INCLUDED IN ABOVE

FLAT SURFACE TO ROOF SHEETING WITH EXTENSION FEET		LADERK002.071 + FEET	LADERK002.072 + FEET	LADERK002.073 + FEET	LADERK002.074 (2 PIECE CAGE) + FEET	LADERK002.075 (2 PIECE CAGE) + FEET
		3610mm	4770mm	5930mm	4770mm	5930mm
LADER002.FOOT.75	Ladder Foot: 75 degrees	2	2	2	2	2

### FLAT SURFACE TO ROOF SHEETING

Below Drawing: LADERK002.072 + HATCH\_SM



## 75 DEGREE LADDER WITH MIDWAY REST PLATFORM FOR INTERNAL ACCESS

FLAT SURFACE TO ROOF SHEETING		LADERK002.081	LADERK002.082	LADERK002.083	LADERK002.084	LADERK002.085
Product Code	Description	6800mm	7960mm	9120mm	10280mm	11430mm
LADER002.LHD	Ladder Head: 2400mm (5 rung 1324mm)	1	1	1	1	1
LADER002.SEC.4	Ladder Section: 1200mm (4 rung)	1	2	1	0	1
LADER002.SEC.8	Ladder Section: 2400mm (8 rung)	2	2	3	4	4
LADER002.SPL	Splice Joint: 600mm (one piece)	4	6	8	8	8
LADER002.BASE.ANGLE_2x350	Ladder Base Support Angle: 2x350mm	2	2	2	2	2
LADER002.BRK.250	Ladder Fixing Bracket: 250mm	3	4	4	4	5
LADER002.BRK.SIDE	Ladder Fixing Bracket: Side Mount 1100x795mm	2	3	3	3	4
LADER002.BRK.LND75	Ladder Fixing Bracket Landing for 75deg	1	1	1	1	1
LADER002.PLT.MID.S	Platform: Midway Rest Side Entry	1	1	1	1	1
LADER002.HATCH_SM	Hatch: Roof Mount Guardrail Kit	1	1	1	1	1
LADER002.CAGE.2	Ladder Cage: (1.01 to 2.0 metres)	1	1	1	0	0
LADER002.CAGE.3	Ladder Cage: (2.01 to 3.0 metres)	1	0	0	1	0
LADER002.CAGE.4	Ladder Cage: (3.01 to 4.0 metres)	0	1	0	0	1
LADER002.CAGE.5	Ladder Cage: (4.01 to 5.0 metres)	0	0	1	1	1
LADER002.CAGE.GATE	Lockable Ladder Cage Gate	1	1	1	1	1
LADER002.CAGE.EXTN	Side Protection Extension	1	1	1	1	1
LADER002.CAP	Ladder Cap	4	4	4	4	4
LADER002.SIGN	Ladder Compliance Sign	1	1	1	1	1

### ADDITIONAL COMPONENTS NOT INCLUDED IN ABOVE

FLAT SURFACE TO ROOF SHEETING WITH EXTENSION FEET		LADERK002.081 + FEET	LADERK002.082 + FEET	LADERK002.083 + FEET	LADERK002.084 + FEET	LADERK002.085 + FEET
		7070mm	8230mm	9390mm	10550mm	11700mm
LADER002.FOOT.75	Ladder Foot: 75 degrees	2	2	2	2	2

### FLAT SURFACE TO ROOF SHEETING

Below Drawing: LADERK002.082





## 75 DEGREE LADDER WITH MIDWAY REST PLATFORM & TOP LANDING PLATFORM

FLAT SURFACE TO ROOF SHEETING		LADERK002.091	LADERK002.092	LADERK002.093	LADERK002.094	LADERK002.095
Product Code	Description	6800mm	7960mm	9120mm	10280mm	11430mm
LADER002.LHD	Ladder Head: 2400mm, 5 rung 1324mm	2	2	2	2	2
LADER002.SEC.4	Ladder Section: 1200mm (4 rung)	0	1	2	1	0
LADER002.SEC.8	Ladder Section: 2400mm (8 rung)	2	2	2	3	4
LADER002.SPL	Splice Joint: 600mm (one piece)	4	6	8	8	8
LADER002.BASE.ANGLE_2x350	Ladder Base Support Angle: 2x350mm	2	2	2	2	2
LADER002.BRK250	Ladder Fixing Bracket: 250mm	2	3	4	4	4
LADER002.BRK.SIDE	Ladder Fixing Bracket: Side Mount 1100x795mm	2	3	4	4	4
LADER002.BRK.LND75	Ladder Fixing Bracket Landing for 75deg	2	2	2	2	2
LADER002.PLT.MID.S	Platform: 2000x1200mm Midway Rest	1	1	1	1	1
LADER002.PLT.TOP.32	Platform: 3200x900mm Ladder Head Landing	1	1	1	1	1
LADER002.CAGE.3	Ladder Cage: (2.01m to 3.0m)	2	1	0	0	0
LADER002.CAGE.4	Ladder Cage: (3.01m to 4.0m)	0	1	2	1	0
LADER002.CAGE.5	Ladder Cage: (4.01m to 5.0m)	0	0	0	1	2
LADER002.CAGE.GATE	Lockable Ladder Cage Door	1	1	1	1	1
LADER002.CAGE.EXTN	Side Protection Extension	1	1	1	1	1
LADER002.CAP	Ladder Cap	4	4	4	4	4
LADER002.SIGN	Ladder Compliance Sign	1	1	1	1	1
<b>ADDITIONAL COMPONENTS NOT INCLUDED IN ABOVE</b>						
FLAT SURFACE TO ROOF SHEETING WITH EXTENSION FEET		LADERK002.091 + FEET	LADERK002.092 + FEET	LADERK002.093 + FEET	LADERK002.094 + FEET	LADERK002.095 + FEET
		7070mm	8230mm	9390mm	10550mm	11700mm
LADER002.FOOT.75	Ladder Foot: 75 degrees	2	2	2	2	2
ROOF SHEETING TO ROOF SHEETING		LADERK002.091 + BASE	LADERK002.092 + BASE	LADERK002.093 + BASE	LADERK002.094 + BASE	LADERK002.095 + BASE
<b>(Platform installed in front of Ladder)</b>		6930mm	8090mm	9250mm	n/a	n/a
LADER002.PLT.BASE	Platform: Adjustable Base (Required if entry area not level)	1	1	1	n/a	n/a
ROOF SHEETING TO ROOF SHEETING		LADERK002.091 + FOOTING	LADERK002.092 + FOOTING	LADERK002.093 + FOOTING	LADERK002.094 + FOOTING	LADERK002.095 + FOOTING
<b>(Ladder installed on top of Platform)</b>		6870mm	8030mm	9190mm	10350mm	11500mm
LADER002.PLT.FOOT	Platform: Footing Landing (Required if entry area not level)	1	1	1	1	1

### FLAT SURFACE TO ROOF SHEETING

Below Drawing: LADERK002.091



## 75 DEGREE LADDER WITH 2.4m ADJUSTABLE PLATFORM & CAGE

FLAT SURFACE TO ROOF SHEETING		LADERK002.061	LADERK002.062	LADERK002.063
Product Code	Description	2200mm	3360mm	4510mm
LADER002.LHD	Ladder Head: 2400mm, 5 rung 1324mm	1	1	1
LADER002.SEC.4	Ladder Section: 1200mm (4 rung)	1	0	1
LADER002.SEC.8	Ladder Section: 2400mm (8 rung)	0	1	1
LADER002.SPL	Splice Joint: 600mm (one piece)	2	2	4
LADER002.BASE.ANGLE_2x350	Ladder Base Support Angle: 2x350mm	1	1	1
LADER002.BRK250	Ladder Fixing Bracket: 250mm	1	1	1
LADER002.BRKADJ.600-1000	Ladder Fixing Bracket: 600-1000mm	0	1	1
LADER002.CAGE.2	Ladder Cage: (0.01m to 2.0m)	1	0	0
LADER002.CAGE.3	Ladder Cage: (2.01m to 3.0m)	0	1	0
LADER002.CAGE.3.1+2	Ladder Cage: (2.01m to 3.0m) (1m+2m)	0	0	0
LADER002.CAGE.4	Ladder Cage: (3.01m to 4.0m)	0	0	1
LADER002.CAGE.4.2+2	Ladder Cage: (3.01m to 4.0m) (2m+2m)	0	0	0
LADER002.CAGE.5	Ladder Cage: (4.01m to 5.0m)	0	0	0
LADER002.CAGE.5.2+3	Ladder Cage: (4.01m to 5.0m) (2m+3m)	0	0	0
LADER002.CAGE.GATE	Lockable Ladder Cage Door	1	1	1
LADER002.PLT.ADJ.2400	Platform: 2400mm Adjustable Landing	1	1	1
LADER002.CAP	Ladder Cap	2	2	2
LADER002.SIGN	Ladder Compliance Sign	1	1	1

### ADDITIONAL COMPONENTS NOT INCLUDED IN ABOVE

FLAT SURFACE TO ROOF SHEETING WITH EXTENSION FEET		LADERK002.061 + FEET	LADERK002.062 + FEET	LADERK002.063 + FEET
		2470mm	3630mm	4790mm
LADER002.FOOT.75	Ladder Foot: 75 degrees	2	2	2

ROOF SHEETING TO ROOF SHEETING (Platform installed in front of ladder)		LADERK002.061 + BASE	LADERK002.062 + BASE	LADERK002.063 + BASE
		2330mm	3490mm	n/a
LADER002.PLT.BASE	Platform: Adjustable Base (Required if entry area not level)	1	1	n/a

ROOF SHEETING TO ROOF SHEETING (Ladder installed on top of platform)		LADERK002.061 + FOOTING	LADERK002.062 + FOOTING	LADERK002.063 + FOOTING
		2270mm	3430mm	4580mm
LADER002.PLT.FOOT	Platform: Footing Landing (Required if entry area not level)	1	1	1

## 75 DEGREE LADDER WITH 2.4m ADJUSTABLE PLATFORM & CAGE

LADERK002.064	LADERK002.065 (2 PIECE CAGE)	LADERK002.066 (2 PIECE CAGE)	LADERK002.067 (2 PIECE CAGE)
5670mm	3360mm	4510mm	5670mm
1	1	1	1
0	0	1	0
2	1	1	2
4	2	4	4
1	1	1	1
1	1	1	1
1	1	1	1
0	0	0	0
0	0	0	0
0	1	0	0
0	0	0	0
0	0	1	0
1	0	0	0
0	0	0	1
1	1	1	1
1	1	1	1
2	2	2	2
1	1	1	1
LADERK002.064 + FEET	LADERK002.065 + FEET	LADERK002.066 + FEET	LADERK002.067 + FEET
5950mm	3630mm	4790mm	5950mm
2	2	2	2
LADERK002.064 + BASE	LADERK002.065 + BASE	LADERK002.066 + BASE	LADERK002.067 + BASE
n/a	3490mm	n/a	n/a
n/a	1	n/a	n/a
LADERK002.064 + FOOTING	LADERK002.065 + FOOTING	LADERK002.066 + FOOTING	LADERK002.067 + FOOTING
5740mm	3430mm	4580mm	5740mm
1	1	1	1

### FLAT SURFACE TO ROOF SHEETING

Below Drawing: LADERK002.062



### ROOF SHEETING TO ROOF SHEETING

Below Drawing: LADERK002.062 + BASE



## 90 DEGREE LADDER WITH TOP PLATFORM & HANDRAILS

FLAT SURFACE TO ROOF SHEETING		LADERK002.101	LADERK002.102	LADERK002.103
Product Code	Description	1080mm	2280mm	3480mm
LADER002.LHD	Ladder Head: 2400mm, 5 Rung 1324mm 75 degrees	1	1	1
LADER002.SEC.4	Ladder Section: 1200mm (4 rung)	0	1	0
LADER002.SEC.8	Ladder Section: 2400mm (8 rung)	0	0	1
LADER002.SPL	Splice Joint: 600mm (one piece)	0	2	2
LADER002.BASE.ANGLE_2x350	Ladder Base Support Angle: 2x350mm	1	1	1
LADER002.BRK250	Ladder Fixing Bracket: 250mm	1	1	2
LADER002.HR.90	Handrail Set: 90 degrees (2 arms)	1	1	1
LADER002.PLT.TOP	Platform: Top (Required if exit area not level)	1	1	1
LADER002.CAP	Ladder Cap	2	2	2
LADER002.SIGN	Ladder Compliance Sign	1	1	1

### ADDITIONAL COMPONENTS NOT INCLUDED IN ABOVE

FLAT SURFACE TO ROOF SHEETING WITH EXTENSION FEET		LADER002.101 + FEET	LADER002.102 + FEET	LADER002.103 + FEET
		1380mm	2580mm	3780mm
LADER002.FOOT.90	Ladder Foot: 90 degrees	2	2	2

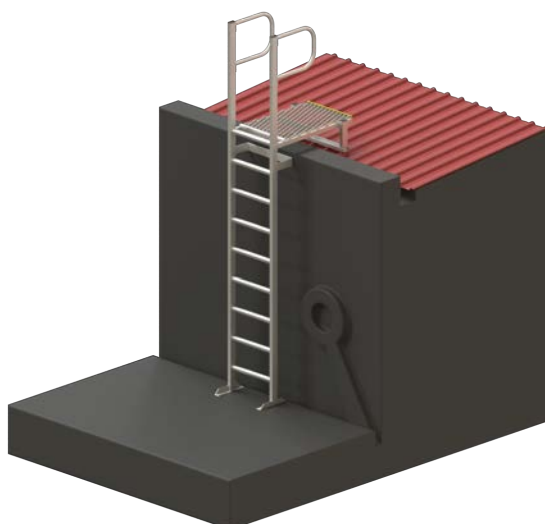
ROOF SHEETING TO ROOF SHEETING (Platform installed in front of ladder)		LADER002.101 + BASE	LADER002.102 + BASE	LADER002.103 + BASE
		1200mm	2400mm	3600mm
LADER002.PLT.BASE	Platform: Adjustable Base (Required if entry area not level)	1	1	N/A

ROOF SHEETING TO ROOF SHEETING (Ladder installed on top of platform)		LADER002.101 + FOOTING	LADER002.102 + FOOTING	LADER002.103 + FOOTING
		1150mm	2350mm	3550mm
LADER002.PLT.FOOT	Platform: Footing Landing (Required if entry area not level)	1	1	1

FLAT SURFACE TO ROOF SHEETING WITH LOCKABLE DOOR		LADER002.101 + DOOR	LADER002.102 + DOOR	LADER002.103 + DOOR
LADER002.DOOR	Ladder Access Lockable Door Kit	1	1	1

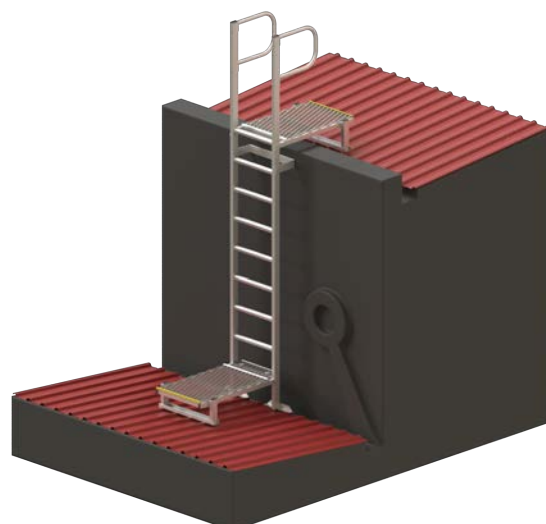
### FLAT SURFACE TO ROOF SHEETING

Below Drawing: LADERK002.102



### ROOF SHEETING TO ROOF SHEETING

Below Drawing: LADERK002.102 + BASE





## 90 DEGREE PARAPET LADDER WITH PLATFORM & HANDRAILS

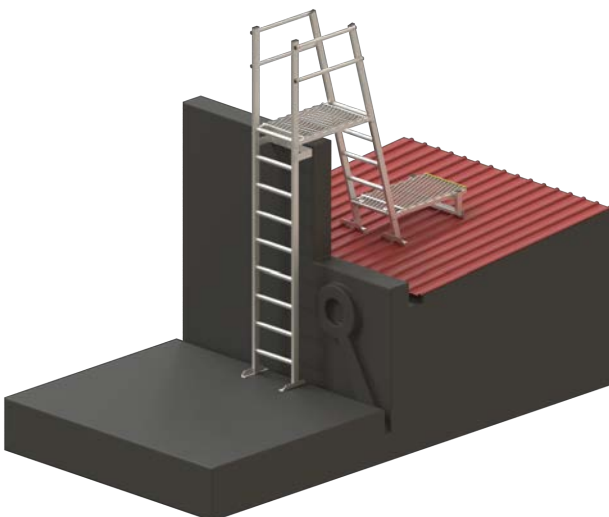
FLAT SURFACE TO ROOF SHEETING		LADERK002.111	LADERK002.112	LADERK002.113
Product Code	Description	1080mm	2280mm	3480mm
LADER002.LHD	Ladder Head: 2400mm, 5 Rung 1324mm 75 degrees	2	2	2
LADER002.SEC.4	Ladder Section: 1200mm (4 rung)	0	1	0
LADER002.SEC.8	Ladder Section: 2400mm (8 rung)	0	0	1
LADER002.SPL	Splice Joint: 600mm (one piece)	0	2	2
LADER002.BASE.ANGLE_2x350	Ladder Base Support Angle: 2x350mm	2	2	2
LADER002.BRK250	Ladder Fixing Bracket: 250mm	1	1	2
LADER002.HR.PRPT.1M	Handrail Set: Parapet 1000mm	1	1	1
LADER002.PLT.1M	Platform: Parapet Landing 1000mm	1	1	1
LADER002.PLT.BASE	Platform: Base (Required if exit area not level)	1	1	1
LADER002.CAP	Ladder Cap	4	4	4
LADER002.SIGN	Ladder Compliance Sign	1	1	1

### ADDITIONAL COMPONENTS NOT INCLUDED IN ABOVE

FLAT SURFACE TO ROOF SHEETING WITH EXTENSION FEET		LADERK002.111 + FEET	LADERK002.112 + FEET	LADERK002.113 + FEET
		1380mm	2580mm	3780mm
LADER002.FOOT.90	Ladder Foot: 90 degrees	2	2	2
ROOF SHEETING TO ROOF SHEETING (Platform installed in front of ladder)		LADERK002.111 + BASE	LADERK002.112 + BASE	LADERK002.113 + BASE
		1200mm	2400mm	3600mm
LADER002.PLT.BASE	Platform: Adjustable Base (Required if entry area not level)	1	1	1
ROOF SHEETING TO ROOF SHEETING (Ladder installed on top of platform)		LADERK002.111 + FOOTING	LADERK002.112 + FOOTING	LADERK002.113 + FOOTING
		1150mm	2350mm	3550mm
LADER002.PLT.FOOT	Platform: Footing Landing (Required if entry area not level)	1	1	1
FLAT SURFACE TO ROOF SHEETING WITH LOCKABLE DOOR		LADERK002.111 + DOOR	LADERK002.112 + DOOR	LADERK002.113 + DOOR
LADER002.DOOR	Ladder Access Lockable Door Kit	n/a	1	1

### FLAT SURFACE TO ROOF SHEETING

Below Drawing: LADERK002.112



### ROOF SHEETING TO ROOF SHEETING

Below Drawing: LADERK002.112 + BASE



## 90 DEGREE LADDER WITH TOP PLATFORM & CAGE

FLAT SURFACE TO ROOF SHEETING		LADERK002.121	LADERK002.122	LADERK002.123
Product Code	Description	2280mm	3480mm	4680mm
LADER002.LHD	Ladder Head: 2400mm, 5 Rung 1324mm 75 degrees	1	1	1
LADER002.SEC.4	Ladder Section: 1200mm (4 rung)	1	0	1
LADER002.SEC.8	Ladder Section: 2400mm (8 rung)	0	1	1
LADER002.SPL	Splice Joint: 600mm (one piece)	2	2	4
LADER002.BASE.ANGLE_2x350	Ladder Base Support Angle: 2x350mm	1	1	1
LADER002.BRK250	Ladder Fixing Bracket: 250mm	1	2	2
LADER002.CAGE.2	Ladder Cage: (0.01m to 2.0m)	1	0	0
LADER002.CAGE.3	Ladder Cage: (2.01m to 3.0m)	0	1	0
LADER002.CAGE.3.1+2	Ladder Cage: (2.01m to 3.0m) Kit (1m+2m+Joiner)	0	0	0
LADER002.CAGE.4	Ladder Cage: (3.01m to 4.0m)	0	0	1
LADER002.CAGE.4.2+2	Ladder Cage: (3.01m to 4.0m) Kit (2m+2m+Joiner)	0	0	0
LADER002.CAGE.5	Ladder Cage: (4.01m to 5.0m)	0	0	0
LADER002.CAGE.5.2+3	Ladder Cage: (4.01m to 5.0m) Kit (2m+3m+Joiner)	0	0	0
LADER002.CAGE.GATE	Lockable Ladder Cage Door	1	1	1
LADER002.HR.90	Handrail Set: 90 degrees (2 arms)	1	1	1
LADER002.PLT.TOP	Platform: Top (Required if exit area not level)	1	1	1
LADER002.CAP	Ladder Cap	2	2	2
LADER002.SIGN	Ladder Compliance Sign	1	1	1

### ADDITIONAL COMPONENTS NOT INCLUDED IN ABOVE

FLAT SURFACE TO ROOF SHEETING WITH EXTENSION FEET		LADER002.121 + FEET	LADER002.122 + FEET	LADER002.123 + FEET
		2580mm	3780mm	4980mm
LADER002.FOOT.90	Ladder Foot: 90 degrees	2	2	2

ROOF SHEETING TO ROOF SHEETING (Platform installed in front of ladder)		LADER002.121 + BASE	LADER002.122 + BASE	LADER002.123 + BASE
		2400mm	3600mm	n/a
LADER002.PLT.BASE	Platform: Adjustable Base (Required if entry area not level)	1	1	n/a

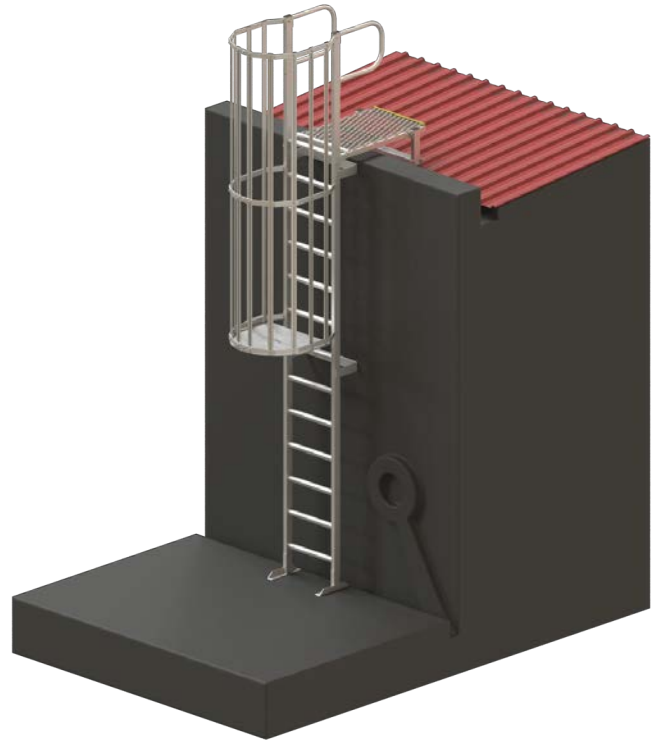
ROOF SHEETING TO ROOF SHEETING (Ladder installed on top of platform)		LADER002.121 + FOOTING	LADER002.122 + FOOTING	LADER002.123 + FOOTING
		2350mm	3550mm	4750mm
LADER002.PLT.FOOT	Platform: Footing Landing (Required if entry area not level)	1	1	1

## 90 DEGREE LADDER WITH TOP PLATFORM & CAGE

LADERK002.124	LADERK002.125 (2 PIECE CAGE)	LADERK002.126 (2 PIECE CAGE)	LADERK002.127 (2 PIECE CAGE)
5880mm	3480mm	4680mm	5880mm
1	1	1	1
0	0	1	0
2	1	1	2
4	2	4	4
1	1	1	1
2	2	2	2
0	0	0	0
0	0	0	0
0	1	0	0
0	0	0	0
0	0	1	0
1	0	0	0
0	0	0	1
1	1	1	1
1	1	1	1
1	1	1	1
2	2	2	2
1	1	1	1
LADER002.124 + FEET	LADER002.125 + FEET	LADER002.126 + FEET	LADER002.127 + FEET
6180mm	3780mm	4980mm	n/a
2	2	2	2
LADER002.124 + BASE	LADER002.125 + BASE	LADER002.126 + BASE	LADER002.127 + BASE
n/a	3600mm	n/a	n/a
n/a	1	n/a	n/a
LADER002.124 + FOOTING	LADER002.125 + FOOTING	LADER002.126 + FOOTING	LADER002.127 + FOOTING
5950mm	3550mm	4750mm	5950mm
1	1	1	1

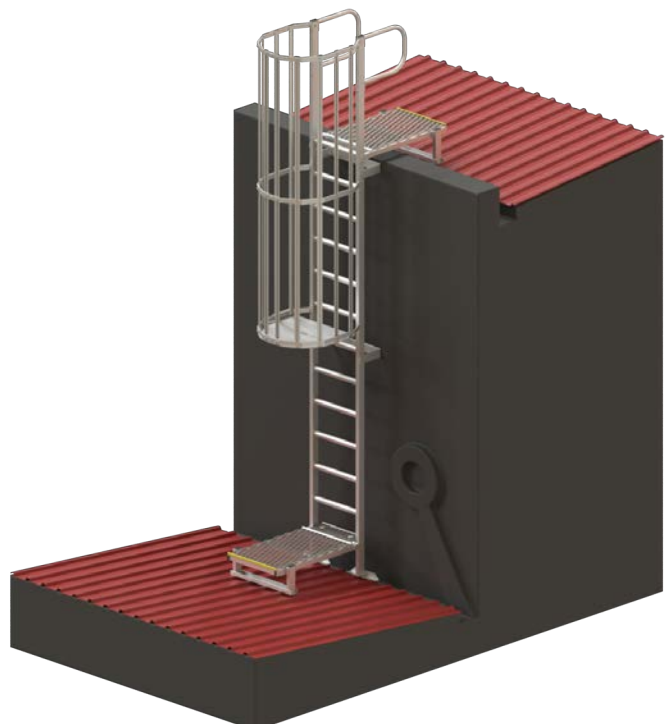
### FLAT SURFACE TO ROOF SHEETING

Below Drawing: LADERK002.122



### ROOF SHEETING TO ROOF SHEETING

Below Drawing: LADERK002.122 + BASE



## 90 DEGREE PARAPET LADDER WITH PLATFORM & CAGE

FLAT SURFACE TO ROOF SHEETING		LADERK002.131	LADERK002.132	LADERK002.133	LADERK002.134
Product Code	Description	2280mm	3480mm	4680mm	5880mm
LADER002.LHD	Ladder Head: 2400mm, 5 Rung 1324mm 75 degrees	2	2	2	2
LADER002.SEC.4	Ladder Section: 1200mm (4 rung)	1	0	1	0
LADER002.SEC.8	Ladder Section: 2400mm (8 rung)	0	1	1	2
LADER002.SPL	Splice Joint: 600mm (one piece)	2	2	4	4
LADER002.BASE.ANGLE_2x350	Ladder Base Support Angle: 2x350mm	2	2	2	2
LADER002.BRK250	Ladder Fixing Bracket: 250mm	1	2	2	2
LADER002.HR.PRPT.1M	Handrail Set: Parapet 1000mm	1	1	1	1
LADER002.PLT.1M	Platform: Parapet Landing 1000mm	1	1	1	1
LADER002.PLT.BASE	Platform: Adjustable Base	1	1	1	1
LADER002.CAGE.2	Ladder Cage: (0.01m to 2.0m)	1	0	0	0
LADER002.CAGE.3	Ladder Cage: (2.01m to 3.0m)	0	1	0	0
LADER002.CAGE.3.1+2	Ladder Cage: (2.01m to 3.0m) Kit (1m+2m+Joiner)	0	0	0	0
LADER002.CAGE.4	Ladder Cage: (3.01m to 4.0m)	0	0	1	0
LADER002.CAGE.4.2+2	Ladder Cage: (3.01m to 4.0m) Kit (2m+2m+Joiner)	0	0	0	0
LADER002.CAGE.5	Ladder Cage: (4.01m to 5.0m)	0	0	0	1
LADER002.CAGE.5.2+3	Ladder Cage: (4.01m to 5.0m) Kit (2m+3m+Joiner)	0	0	0	0
LADER002.CAGE.GATE	Lockable Ladder Cage Door	1	1	1	1
LADER002.CAP	Ladder Cap	4	4	4	4
LADER002.SIGN	Ladder Compliance Sign	1	1	1	1

### ADDITIONAL COMPONENTS NOT INCLUDED IN ABOVE

FLAT SURFACE TO ROOF SHEETING WITH EXTENSION FEET		LADER002.131 + FEET	LADER002.132 + FEET	LADER002.133 + FEET	LADER002.134 + FEET
		2580mm	3780mm	4980mm	n/a
LADER002.FOOT.90	Ladder Foot: 90 degrees	2	2	2	n/a

ROOF SHEETING TO ROOF SHEETING (Platform installed in front of ladder)		LADER002.131 + BASE	LADER002.132 + BASE	LADER002.133 + BASE	LADER002.134 + BASE
		2400mm	3600mm	n/a	n/a
LADER002.PLT.BASE	Platform: Adjustable Base (Required if entry area not level)	1	1	n/a	n/a

ROOF SHEETING TO ROOF SHEETING (Ladder installed on top of platform)		LADER002.131 + FOOTING	LADER002.132 + FOOTING	LADER002.133 + FOOTING	LADER002.134 + FOOTING
		2350mm	3550mm	4750mm	5950mm
LADER002.PLT.FOOT	Platform: Footing Landing (Required if entry area not level)	1	1	1	1



## 90 DEGREE PARAPET LADDER WITH PLATFORM & CAGE

LADERK002.135 (2 PIECE CAGE)	LADERK002.136 (2 PIECE CAGE)	LADERK002.137 (2 PIECE CAGE)
3480mm	4680mm	5880mm
2	2	2
0	1	0
1	1	2
2	4	4
2	2	2
2	2	2
1	1	1
1	1	1
1	1	1
0	0	0
0	0	0
1	0	0
0	0	0
0	1	0
0	0	0
0	0	1
1	1	1
4	4	4
1	1	1

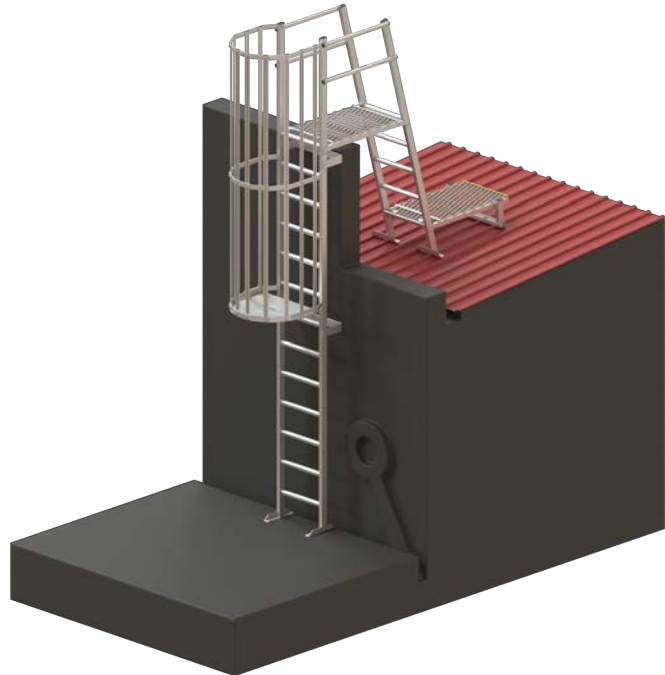
LADER002.135 + FEET	LADER002.136 + FEET	LADER002.137 + FEET
3780mm	4980mm	n/a
2	2	n/a

LADER002.135 + BASE	LADER002.136 + BASE	LADER002.137 + BASE
3600mm	n/a	n/a
1	n/a	n/a

LADER002.135 + FOOTING	LADER002.136 + FOOTING	LADER002.137 + FOOTING
3550mm	4750mm	5950mm
1	1	1

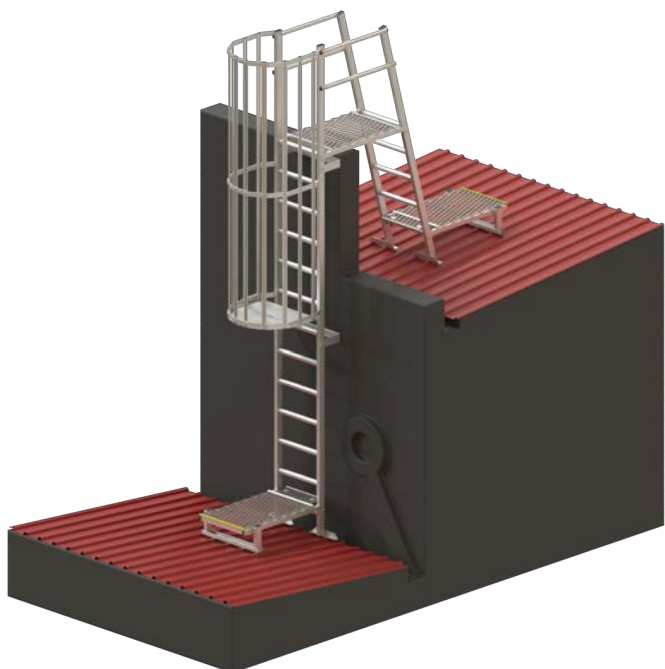
### FLAT SURFACE TO ROOF SHEETING

Below Drawing: LADERK002.132



### ROOF SHEETING TO ROOF SHEETING

Below Drawing: LADERK002.132+BASE



## 90 DEGREE LADDER WITH 2.4m ADJUSTABLE PLATFORM & CAGE

FLAT SURFACE TO ROOF SHEETING		LADERK002.141	LADERK002.142	LADERK002.143	LADERK002.144
Product Code	Description	2280mm	3480mm	4680mm	5880mm
LADER002.LHD	Ladder Head: 2400mm, 5 Rung 1324mm 75 degrees	1	1	1	1
LADER002.SEC.4	Ladder Section: 1200mm (4 rung)	1	0	1	0
LADER002.SEC.8	Ladder Section: 2400mm (8 rung)	0	1	1	2
LADER002.SPL	Splice Joint: 600mm (one piece)	2	2	4	4
LADER002.BASE.ANGLE_2x350	Ladder Base Support Angle: 2x350mm	1	1	1	1
LADER002.BRK250	Ladder Fixing Bracket: 250mm	1	2	2	2
LADER002.CAGE.2	Ladder Cage: (0.01m to 2.0m)	1	0	0	0
LADER002.CAGE.3	Ladder Cage: (2.01m to 3.0m)	0	1	0	0
LADER002.CAGE.3.1+2	Ladder Cage: (2.01m to 3.0m) (1m+2m)	0	0	0	0
LADER002.CAGE.4	Ladder Cage: (3.01m to 4.0m)	0	0	1	0
LADER002.CAGE.4.2+2	Ladder Cage: (3.01m to 4.0m) (2m+2m)	0	0	0	0
LADER002.CAGE.5	Ladder Cage: (4.01m to 5.0m)	0	0	0	1
LADER002.CAGE.5.2+3	Ladder Cage: (4.01m to 5.0m) (2m+3m)	0	0	0	0
LADER002.CAGE.GATE	Lockable Ladder Cage Door	1	1	1	1
LADER002.PLT.ADJ.2400	Platform: 2400mm Adjustable Landing	1	1	1	1
LADER002.CAP	Ladder Cap	2	2	2	2
LADER002.SIGN	Ladder Compliance Sign	1	1	1	1

### ADDITIONAL COMPONENTS NOT INCLUDED IN ABOVE

FLAT SURFACE TO ROOF SHEETING WITH EXTENSION FEET		LADERK002.141 + FEET	LADERK002.142 + FEET	LADERK002.143 + FEET	LADERK002.144 + FEET
		2580mm	3780mm	4980mm	n/a
LADER002.FOOT.90	Ladder Foot: 90 degrees	2	2	2	n/a

ROOF SHEETING TO ROOF SHEETING (Platform installed in front of ladder)		LADERK002.141 + BASE	LADERK002.142 + BASE	LADERK002.143 + BASE	LADERK002.144 + BASE
		2400mm	3600mm	n/a	n/a
LADER002.PLT.BASE	Platform: Adjustable Base (Required if entry area not level)	1	1	n/a	n/a

ROOF SHEETING TO ROOF SHEETING (Ladder installed on top of platform)		LADERK002.141 + FOOTING	LADERK002.142 + FOOTING	LADERK002.143 + FOOTING	LADERK002.144 + FOOTING
		2350mm	3550mm	4750mm	5950mm
LADER002.PLT.FOOT	Platform: Footing Landing (Required if entry area not level)	1	1	1	1

## 90 DEGREE LADDER WITH 2.4m ADJUSTABLE PLATFORM & CAGE

LADERK002.145 (2 PIECE CAGE)	LADERK002.146 (2 PIECE CAGE)	LADERK002.147 (2 PIECE CAGE)
3480mm	4680mm	5880mm
1	1	1
0	1	0
1	1	2
2	4	4
1	1	1
2	2	2
0	0	0
0	0	0
1	0	0
0	0	0
0	1	0
0	0	0
0	0	1
1	1	1
1	1	1
2	2	2
1	1	1

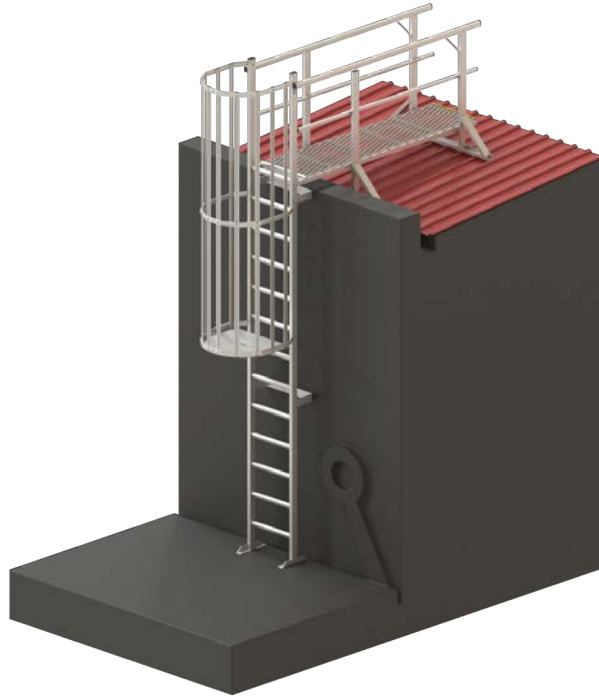
LADERK002.145 + FEET	LADERK002.146 + FEET	LADERK002.147 + FEET
3780mm	4980mm	n/a
2	2	n/a

LADERK002.145 + BASE	LADERK002.146 + BASE	LADERK002.147 + BASE
3600mm	n/a	n/a
1	n/a	n/a

LADERK002.145 + FOOTING	LADERK002.146 + FOOTING	LADERK002.147 + FOOTING
3550mm	4750mm	5950mm
1	1	1

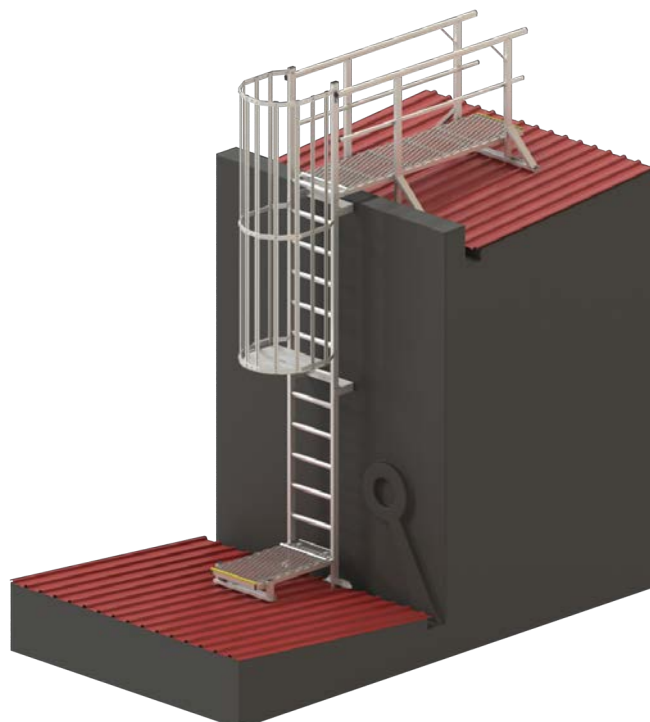
### FLAT SURFACE TO ROOF SHEETING

Below Drawing: LADERK002.142



### ROOF SHEETING TO ROOF SHEETING

Below Drawing: LADERK002.142 + BASE



## 90 DEGREE LADDER WITH CAGE FOR INTERNAL ACCESS

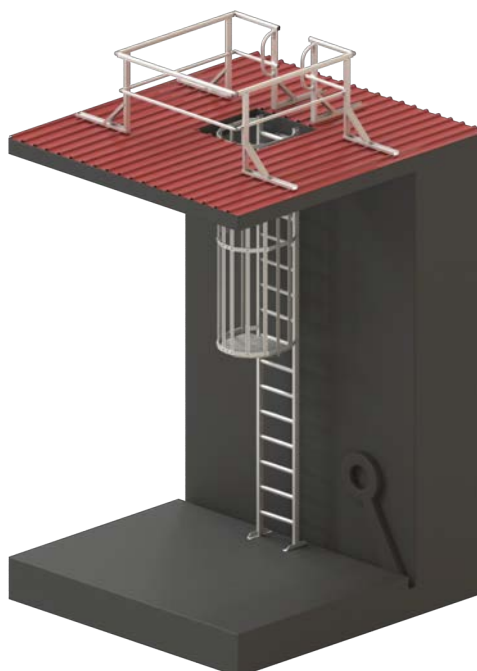
FLAT SURFACE TO ROOF SHEETING		LADERK002.151	LADERK002.152	LADERK002.153	LADERK002.154 (2 PIECE CAGE)	LADERK002.155 (2 PIECE CAGE)
Product Code	Description	3475mm	4675mm	5875mm	4675mm	5875mm
LADER002.SEC.4	Ladder Section: 1200mm (4 rung)	1	0	1	0	1
LADER002.SEC.8	Ladder Section: 2400mm (8 rung)	1	2	2	2	2
LADER002.SPL	Splice Joint: 600mm (one piece)	2	2	4	2	4
LADER002.BASE.ANGLE_2x350	Ladder Base Support Angle: 2x350mm	1	1	1	1	1
LADER002.BRK250	Ladder Fixing Bracket: 250mm	2	2	2	2	2
LADER002.CAGE.2	Ladder Cage: (1.01 to 2.0 metres)	1	0	0	0	0
LADER002.CAGE.3	Ladder Cage: (2.01 to 3.0 metres)	0	1	0	0	0
LADER002.CAGE.3.1+2	Ladder Cage: (2.01 to 3.0 metres) (1m+2m)	0	0	0	1	0
LADER002.CAGE.4	Ladder Cage: (3.01 to 4.0 metres)	0	0	1	0	0
LADER002.CAGE.4.2+2	Ladder Cage: (3.01 to 4.0 metres) (2m+2m)	0	0	0	0	1
LADER002.CAGE.GATE	Lockable Ladder Cage Gate	1	1	1	1	1
LADER002.HATCH_SM	Hatch: Roof Mount Guardrail Kit	1	1	1	1	1
LADER002.CAP	Ladder Cap	2	2	2	2	2
LADER002.SIGN	Ladder Compliance Sign	1	1	1	1	1

### ADDITIONAL COMPONENTS NOT INCLUDED IN ABOVE

FLAT SURFACE TO ROOF SHEETING WITH EXTENSION FEET		LADERK002.151 + FEET	LADERK002.152 + FEET	LADERK002.153 + FEET	LADERK002.154 + FEET	LADERK002.155 + FEET
		3775mm	4975mm	n/a	4975mm	n/a
LADER002.FOOT.90	Ladder Foot: 90 degrees	2	2	n/a	2	n/a

### FLAT SURFACE TO ROOF SHEETING

Below Drawing: LADERK002.152





## 90 DEGREE LADDER WITH MIDWAY REST PLATFORM FOR INTERNAL ACCESS

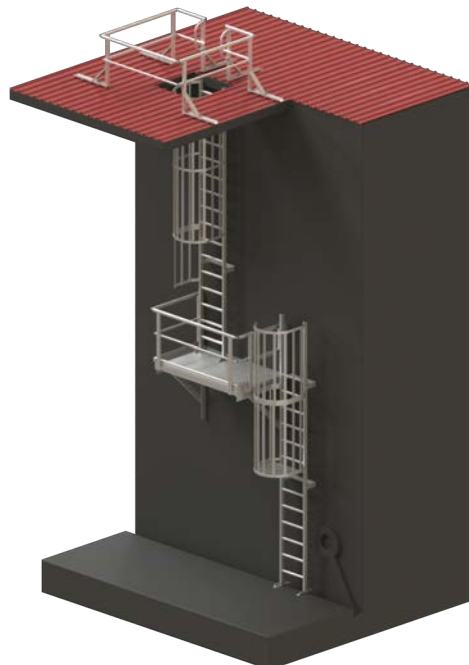
FLAT SURFACE TO ROOF SHEETING		LADERK002.161	LADERK002.162	LADERK002.163	LADERK002.164	LADERK002.165
Product Code	Description	6775mm	7975mm	9175mm	10375mm	11575mm
LADER002.SEC.4	Ladder Section: 1200mm (4 rung)	1	2	1	0	1
LADER002.SEC.8	Ladder Section: 2400mm (8 rung)	3	3	4	5	5
LADER002.SPL	Splice Joint: 600mm (one piece)	4	6	6	6	8
LADER002.BASE.ANGLE_2x350	Ladder Base Support Angle: 2x350mm	2	2	2	2	2
LADER002.BRK250	Ladder Fixing Bracket: 250mm	4	5	5	5	5
LADER002.PLT.MID.S	Platform: Midway Rest Side Entry	1	1	1	1	1
LADER002.CAGE.2	Ladder Cage: (1.01 to 2.0 metres)	2	1	0	0	0
LADER002.CAGE.3	Ladder Cage: (2.01 to 3.0 metres)	0	1	2	1	0
LADER002.CAGE.4	Ladder Cage: (3.01 to 4.0 metres)	0	0	0	1	2
LADER002.CAGE.GATE	Lockable Ladder Cage Gate	1	1	1	1	1
LADER002.CAGE.1.3	Ladder Half Cage: 1300mm	1	1	1	1	1
LADER002.CAGE.JOIN	Ladder Cage Joiner Kit	1	1	1	1	1
LADER002.HATCH_SM	Hatch: Roof Mount Guardrail Kit	1	1	1	1	1
LADER002.CAP	Ladder Cap	4	4	4	4	4
LADER002.SIGN	Ladder Compliance Sign	1	1	1	1	1

### ADDITIONAL COMPONENTS NOT INCLUDED IN ABOVE

FLAT SURFACE TO ROOF SHEETING WITH EXTENSION FEET		LADERK002.161 + FEET	LADERK002.162 + FEET	LADERK002.163 + FEET	LADERK002.164 + FEET	LADERK002.165 + FEET
		7075mm	8275mm	10015mm	10675mm	11875mm
LADER002.FOOT.90	Ladder Foot: 90 degrees	2	2	2	2	2

### FLAT SURFACE TO ROOF SHEETING

Below Drawing: LADERK002.162



# APPENDIX - CHEMICAL ADHESIVE



## POSITIONING OF CONCRETE ANCHOR

The Concrete Anchor must be in a position easily and safely reached from a safe access point. Concrete anchor should not be positioned close to an edge, minimum distance 150mm. Minimum concrete thickness 150mm.

## LOCATING THE REINFORCING STEEL BAR (REO BAR) IN THE CONCRETE

Use Digital metal detector (Example: BOSCH DMO 10) to locate the Reo bar in the concrete when positioning the Concrete Anchor. This ensures reo bars are avoided when drilling.

## DRILLING THE HOLE

Drill a hole to a depth and width as suggested in below table.

## PREPARING THE HOLE

The hole must be moisture and dust free. Remove dust using compressed air, small brush, and vacuum cleaner.



## INSTALLING THE CONCRETE ANCHOR

- Recommended chemical is Fischer FIS-V.
- Prior to anchor installation, refer to installation procedure for individual anchor product and check chemical is within expiry date.
- The injection cartridge is for use with a standard caulking gun.
- Partially used cartridges can be re-used by changing the mixing nozzle.
- The entire surface of the anchors embedded section must be within the concrete and shall use sufficient adhesive mortar as specified in the table below.



**DOWNLOAD  
CHEMICAL  
DATA SHEET**

**PRODUCT CODE: CON-CHEM-FISV.300**

Components	Description	Qty	
CON-CHEM-FISV.300.01	Injection Mortar FIS V Cartridge 300ml	1	
CON-CHEM-FISMR	Static Mixer FIS MR	2	

**FIS V 300T: INJECTION MORTAR**

APPLICATION	ANCHOR DIAMETER(mm)	DRILL HOLE DIAMETER(mm)	DRILL HOLE DEPTH(mm)	MORTAR/ FIXING(ml)	NO# OF FIXING/ CARTRIDGE
DonutLink FrogLine	16	18	95	15	20
Concrete Insert	24	28	90	40	7.5
One Piece Eyebolt	16	18	90	15	20
WindowLink	53&25	55&28	20&122	60	5
SwiveLink	24	28	90	40	7.5
M12x160 Anchor Rod	12	14	115	10	30
M16x160 Anchor Rod	16	18	115	15	20
X-Rail	12	14	95	10	30

**CURING TIME FIS V**

Cartridge Temperature (mortar)	Gelling Time	Temperature at anchoring base	Curing Time
		- 5 C - ± 0 C	24 hours
+ 0 C - + 5 C	13 minutes	± 0 C - + 5 C	3 hours
+ 5 C - + 10 C	9 minutes	+ 5 C - + 10 C	90 minutes
+ 10 C - + 20 C	5 minutes	+ 10 C - + 20 C	60 minutes
+ 20 C - + 30 C	4 minutes	+ 20 C - + 30 C	45 minutes
+ 30 C - + 40 C	2 minutes	+ 30 C - + 40 C	35 minutes

The above times apply from the moment of contact between resin and hardener in the static mixer.

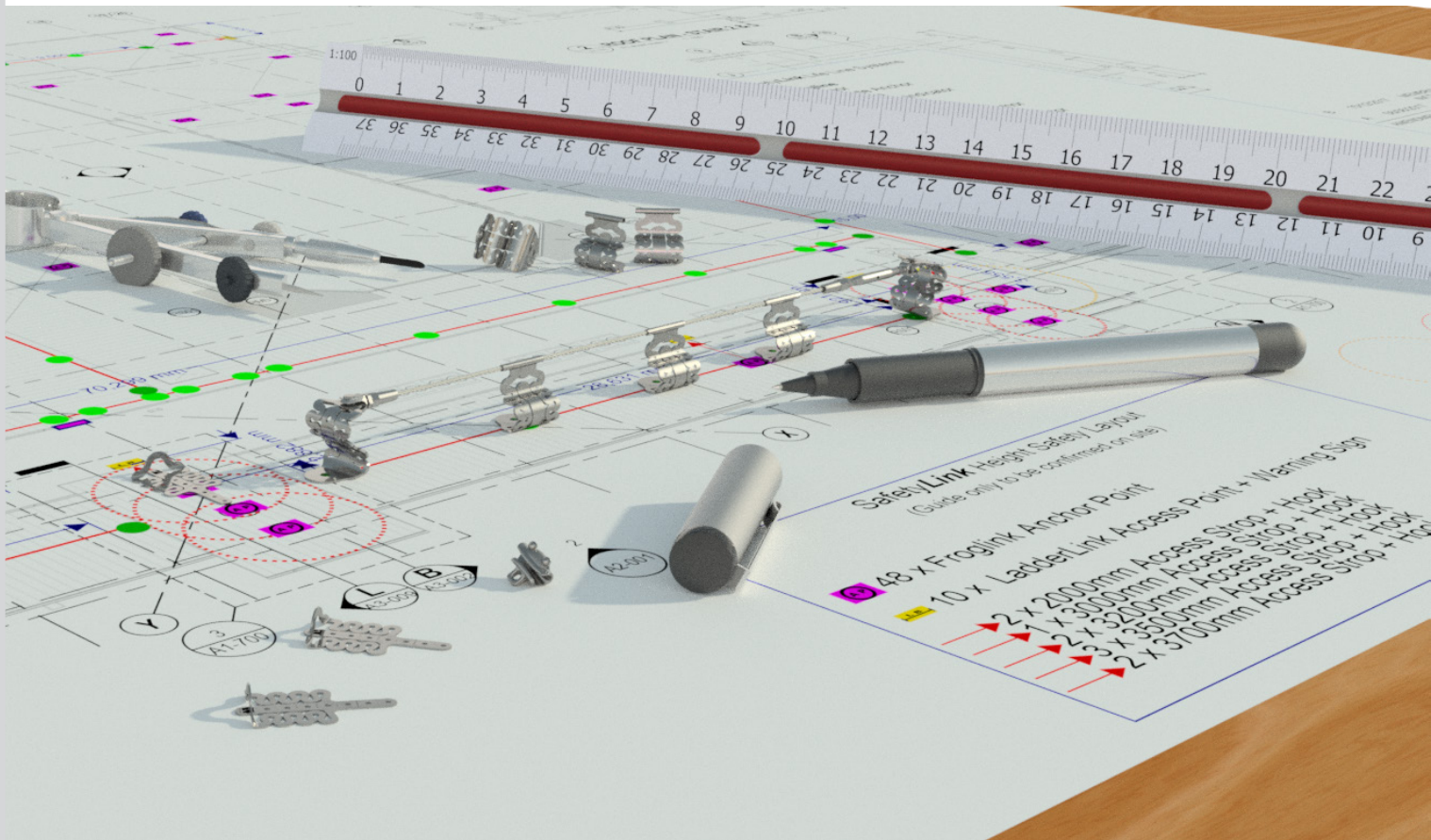
For installation, the cartridge temperature must be at least +5 C. For longer installation times, IE when interruptions occur in work, the mixer should be replaced.

**TESTING FOR CONCRETE MOUNTED ANCHOR**

To comply with current Standards each Concrete unit must be tested after installation. Allow required curing time as specified in above table before testing. Test consists of pull out force to 50% of design load of anchorage. Note: Drilled-in anchorages such as friction and glued-in anchorages shall be placed so that the shear load is at least twice the tension load. For collared eyebolts this translates to a pull at an angle not exceeding 20 degrees to the surface in which the bolt is installed.



## Expert Fall Protection Planning



SafetyLink's design and planning team are here to help work out the positioning of your fall protection system, ensuring all areas of your roof are accessed safely.

Things to consider when planning your roof layout:

- Are all areas of your roof protected, allowing complete access when working at heights?
- Are you protected from the ground up, allowing complete access to your roof?
- Detailed comprehensive documentation provided e.g. installation guides, testing results, product sheets should be provided.
- SafetyLink can also provide you with a qualified and reputable installer of SafetyLink products.

Contact our design team at [info@safetylink.com](mailto:info@safetylink.com) and we can plan your fall arrest system for you.



Ladder Catalogue



Ladder Handbook



Ladder Training



Terms & Conditions



SafetyLink Website

Quality Assurance



Notes

Notes section with horizontal lines for writing.





**SafetyLink®**

*INNOVATIVE FALL PROTECTION*

**Asia-Pacific/The Americas**

**[info@safetylink.com](mailto:info@safetylink.com)**

**1300 789 545 | +61 (0)2 4964 1068**

**Europe/Africa/Middle East**

**+33 61 949 3867**

**[europe.sales@safetylink.com](mailto:europe.sales@safetylink.com)**

**Northern Europe**

**+44 75 9950 8290**

**[uk.sales@safetylink.com](mailto:uk.sales@safetylink.com)**

**[www.safetylink.com](http://www.safetylink.com)**



FS 707792