



Queensland Swimwear Company



SUMMER FIT TIPS GUIDE!



QUALITY / FIT / AUSTRALIAN MADE

WWW.QUEENSLANDSWIMWEAR.COM.AU



Queensland Swimwear Company

DO YOU HAVE A LARGE BUST?

DD/E/F cup

FIT TIP!

- Choose styles with deeper shelf liners & inner cups and wider straps all offer extra support.
- Look for good coverage in the cup and at the underarm to prevent the bust spilling out.
- Look for a back band or a higher backed suit to offer support to the bust.
- High Tech good quality fabrics will ensure your swimsuit stays supportive.

STYLE NO. TO2P

Springtime Princess Seamed: With shelf bust support and tummy control feature [Click here to view on-line](#)



Supportive large bust one piece swimsuit suitable for a DD+ Cup. Has strong shelf elastic for bigger bust support. Fully lined with power mesh for tummy control, creating a flattering swimwear style to suit any full figure body shape.

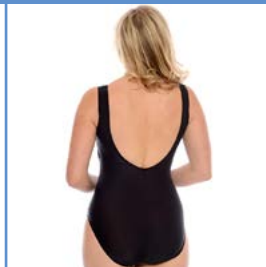
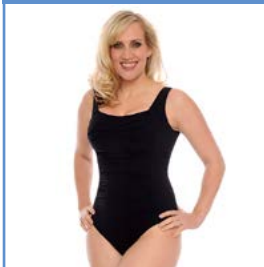
- Classic princess seamed one piece design giving you a flattering swimwear style.
- Inner shelf liner fits DD / E cups and E / F cup fitting.
- Front tummy liner is powermesh give support and extra tummy control.
- Strong shelf elastic for bigger bust support.



STYLE NO. TO7

Silhouette Ruched One Piece Swimsuit

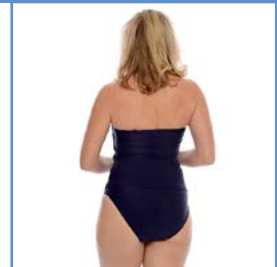
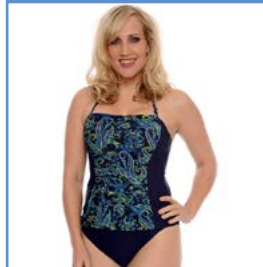
[Click here to view on-line](#)



STYLE NO. BT3P

Neon Paisley Ruched Bandeau Tankini Top

[Click here to view on-line](#)



QUALITY / FIT / AUSTRALIAN MADE

THE HOME OF STYLISH QUALITY SWIMWEAR, FOCUSING ON SUPERIOR FIT



Queensland Swimwear Company

WANT TO DISGUISE YOUR TUMMY?

FIT TIP!

- Supportive powermesh linings and tummy ruching will control & disguise tummy areas.
- Choose clever designs that are seamed to make the waistline appear slimmer.
- Prints worn across the tummy area disguise a problem tummy more than a plain colour.
- Wear a Tankini with a looser cut that skims over your middle area.
- Higher waisted, or bottoms with waists that fold down are great for tricky tummys.

STYLE NO. TO7P

Springtime Ruched One Piece Swimsuit: With shelf bust support and ruched tummy control

[Click here to view on-line](#)



Supportive large bust one piece swimsuit with strong shelf elastic for bigger bust support, and inner contour cups for a smooth bust shape. Fully lined with power mesh for tummy control, and a ruched front design feature creates a flattering swimwear style to suit any full figure body shape.

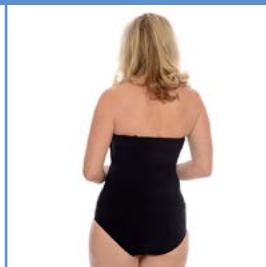
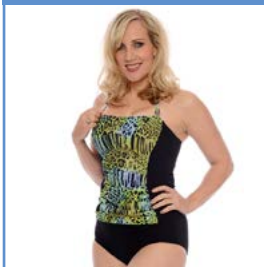
- Plain black back & front tummy control gives a flattering swimwear style.
- Front tummy liner is power mesh for support and to give extra tummy control.
- Inner contour DD+ cups for smooth bust shape.
- Strong shelf elastic for bigger bust support.



STYLE NO. BT3P

Beach Safari Ruched Bandeau Tankini Top

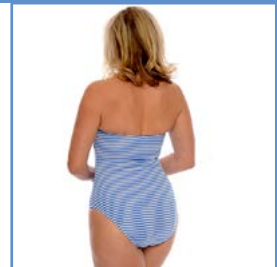
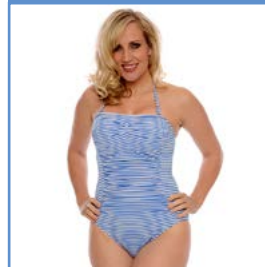
[Click here to view on-line](#)



STYLE NO. BO6P

Chambray Ruched Bandeau One Piece

[Click here to view on-line](#)



QUALITY / FIT / AUSTRALIAN MADE

THE HOME OF STYLISH QUALITY SWIMWEAR, FOCUSING ON SUPERIOR FIT



Queensland Swimwear Company

FIT TIP!

WANT TO DISGUISE YOUR HIPS & THIGHS?

- Team a darker bottom with a printed top to draw the eye upwards away from your tummy area.
- Choose styles where all the detail is in the upper part of the suit.
- Avoid low rises or tie sides that will dig into hips.
- Avoid tight boy shorts which will dig into thighs.

STYLE NO. BT3P

Beach Safari Ruched Bandeau Tankini Top: With bust support and ruched slimming design feature

[Click here to view on-line](#)



Supportive tankini swimsuit for a large bust suitable for a DD+ Cup. Has strong shelf elastic for bigger bust support, and removable inner cups for a smooth bust shape. A ruched front design feature is slimming and creates a flattering swimwear shape to suit any full figure.

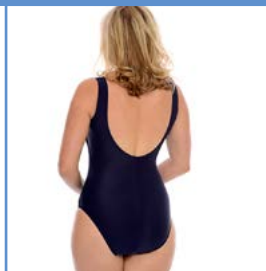
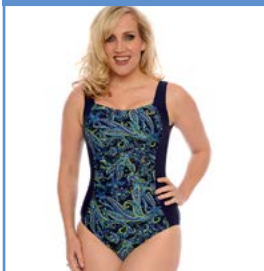
- Front ruched design feature giving you a flattering swimwear style.
- Inner contour DD+ cups for smooth bust shape.
- Strong shelf elastic for bigger bust support.
- Multiway straps for many flattering swimsuit styles, straight, halter or X over for extra support.
- Finest quality European fabric .



STYLE NO. T07P

Neon Paisley Ruched One Piece

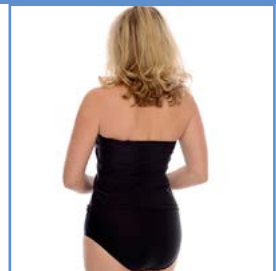
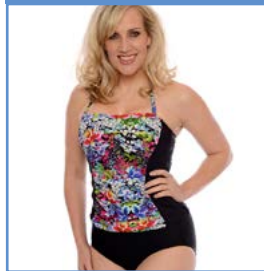
[Click here to view on-line](#)



STYLE NO. BT3P

Springtime Ruched Bandeau Tankini Top

[Click here to view on-line](#)



QUALITY / FIT / AUSTRALIAN MADE

THE HOME OF STYLISH QUALITY SWIMWEAR, FOCUSING ON SUPERIOR FIT



Queensland Swimwear Company

DO YOU HAVE AN HOURGLASS FIGURE?

FIT TIP!

- Don't be afraid to be brave and show off your curves.
- A supportive One Piece will look great on a fuller busted hourglass figure
- Choose styles that enhance your slimmer waist.
- Choose 2 pieces where the top & bottom fit well & are in proportion to each other.

STYLE NO. BO6P

Neon Paisley Ruched Bandeau One Piece Swimsuit: With bust support and tummy control

[Click here to view on-line](#)



Supportive one piece swimsuit for a fuller bust. Has strong shelf elastic for bigger bust support and inner removable contour cups for a smooth bust shape. Front liner is power mesh liner for tummy control and a slimming shape. A ruched front design feature, multiway straps, creates a flattering swimwear silhouette to suit any body type.

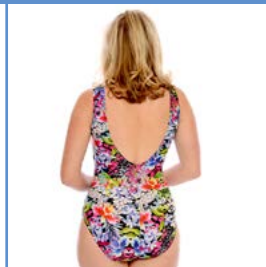
- Plain back and ruched front design feature gives the perfect flattering swimwear style.
- Front tummy liner is power mesh to add tummy control and support.
- Inner contour DD+ cups for smooth bust shape.
- Strong shelf elastic for bigger bust support.
- Multiway straps for many flattering swimsuit styles, straight, halter or X over for extra support.



STYLE NO. TO2

Springtime Princess Seamed

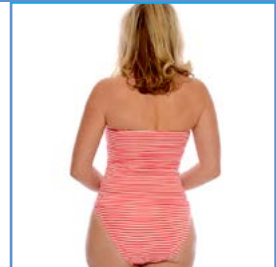
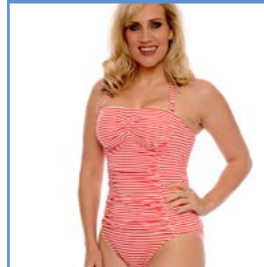
[Click here to view on-line](#)



STYLE NO. BO6P

Watermelon Ruched Bandeau One Piece

[Click here to view on-line](#)



QUALITY / FIT / AUSTRALIAN MADE

THE HOME OF STYLISH QUALITY SWIMWEAR, FOCUSING ON SUPERIOR FIT



Queensland Swimwear Company

DO YOU HAVE AN ATHLETIC FIGURE?

FIT TIP!

- Choose a style to enhance your bust and add curves to your frame.
- A halter top can enhance a cleavage.
- Hipster briefs really flatter your slim frame.
- Bows, padding and added details bring attention to the bust & hips and create a waistline.
- Avoid straight vertical seaming or stripes as this will add length to your body.

STYLE NO. HB3HP5

Chambray Halter Two Piece Bikini: With ties for perfect fit and bust support

[Click here to view on-line](#)



Flattering halter neck bikini two piece with inner contour cups for a smooth bust shape and adjustable ties for perfect bust support and fit. A flattering swimwear style to suit an athletic or a fuller busted body shape.

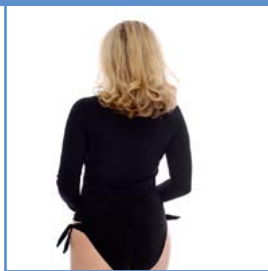
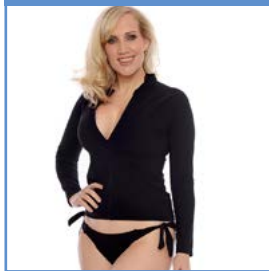
- Inner foam cup size swimwear to give smooth shape & bust support.
- Neck ties create a halter design, giving you a flattering swimwear style and extra bust support.
- Ties at back and neck allow the perfect fit for full figure bodyshapes.
- Cups slide and fit comfortably sizes to a DD +cup swimwear.
- Tie side bikini pant is adjustable and allows the perfect fit.
- Fully lined front and back
- Low front hipster rise for a flattering bikini design.



STYLE NO. RJ1

Silhouette Rash Jacket

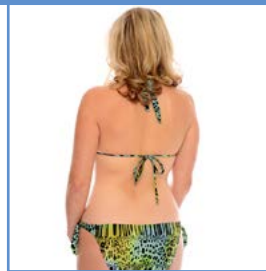
[Click here to view on-line](#)



STYLE NO. HB3HP5

Beach Safari Halter Two Piece Bikini

[Click here to view on-line](#)



QUALITY / FIT / AUSTRALIAN MADE

THE HOME OF STYLISH QUALITY SWIMWEAR, FOCUSING ON SUPERIOR FIT



Queensland Swimwear Company

FIT TIP!

DO YOU HAVE A SHORTER BODY LENGTH?

- Choose a 2 piece for a better body fit.
- Choose lower rises as this will give the illusion of a longer body.
- Vertical seaming or stripes will lengthen a shorter body length.
- Avoid shorts or boylegs as these will make legs appear shorter.
- Avoid horizontal stripes.

STYLE NO. HB3HP5

Silhouette Halter Two Piece Bikini: With ties for perfect fit and bust support

[Click here to view on-line](#)



Flattering halter neck bikini two piece with inner contour cups for a smooth bust shape and adjustable ties for perfect bust support and fit. A flattering swimwear style to suit an athletic or a fuller busted body shape.

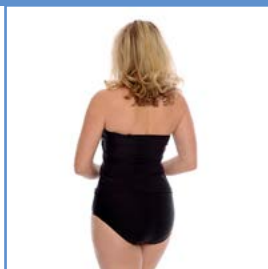
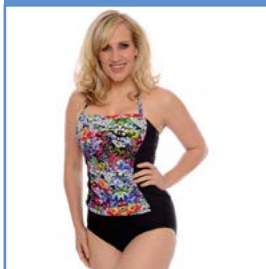
- Inner foam cup size swimwear to give smooth shape & bust support.
- Neck ties create a halter design, giving you a flattering swimwear style and extra bust support.
- Ties at back and neck allow the perfect fit for full figure bodyshapes.
- Cups slide and fit comfortably sizes to a DD +cup swimwear.
- Tie side bikini pant is adjustable and allows the perfect fit.
- Fully lined front and back
- Low front hipster rise for a flattering bikini design.



STYLE NO. BT3P

Springtime Ruched Bandeau Tankini Top

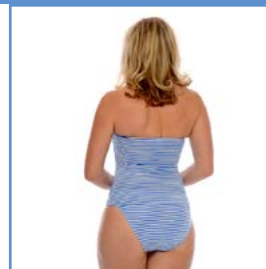
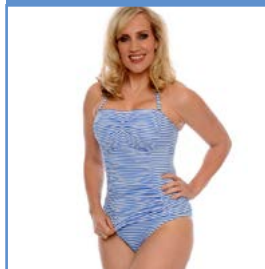
[Click here to view on-line](#)



STYLE NO. BT3P

Chambray Ruched Bandeau Tankini Top

[Click here to view on-line](#)



QUALITY / FIT / AUSTRALIAN MADE

THE HOME OF STYLISH QUALITY SWIMWEAR, FOCUSING ON SUPERIOR FIT



Queensland Swimwear Company

FIT TIP!

DO YOU HAVE A LONGER BODY LENGTH?

- Choose a 2 piece for a better body fit.
- Choose slightly higher rises as this will make the body length appear shorter.
- Avoid straight vertical stripes as this will add length to your body.
- Avoid low hipster bottoms as this will lengthen the look of the body.

STYLE NO. BT3

Beach Safari Ruched Bandeau Tankini Top: With bust support and ruched slimming design feature

[Click here to view on-line](#)



Supportive tankini swimsuit for a large bust suitable for a DD+ Cup. Has strong shelf elastic for bigger bust support, and removable inner cups for a smooth bust shape. A ruched front design feature is slimming and creates a flattering swimwear shape to suit any full figure.

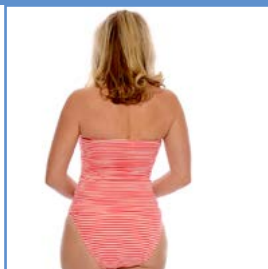
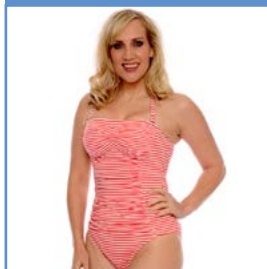
- Front ruched design feature giving you a flattering swimwear style.
- Inner contour DD+ cups for smooth bust shape.
- Strong shelf elastic for bigger bust support.
- Multiway straps for many flattering swimsuit styles, straight, halter or X over for extra support.



STYLE NO. BT3P

Watermelon Ruched Bandeau Tankini Top

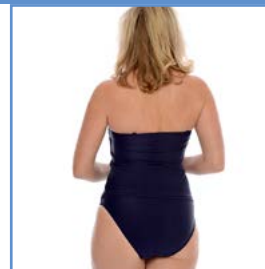
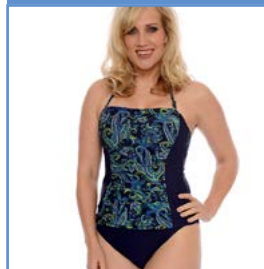
[Click here to view on-line](#)



STYLE NO. BT3P

Neon Paisley Ruched Bandeau Tankini Top

[Click here to view on-line](#)



QUALITY / FIT / AUSTRALIAN MADE

THE HOME OF STYLISH QUALITY SWIMWEAR, FOCUSING ON SUPERIOR FIT