

ENHANCING THE WORLD'S MOST PRECIOUS RESOURCE IN YOUR CARAVAN & RV



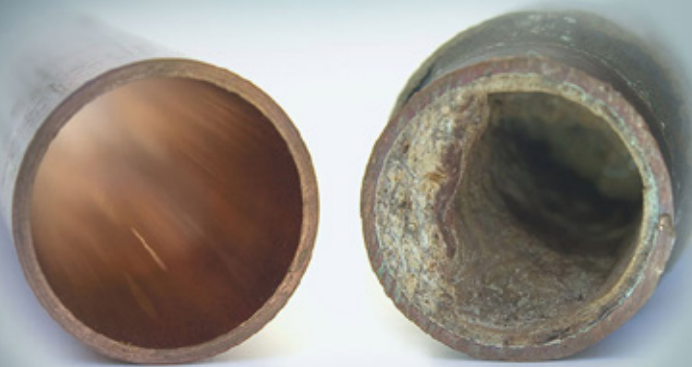
- ✓ Eco-Friendly
- ✓ Chemical & Salt Free
- ✓ No Moving Parts
- ✓ Non-Sacrificial
- ✓ No Power Source Required
- ✓ Maintenance Free
- ✓ Lifetime Warranty*
- ✓ Simple Self Installation

*Refer to website for more information

SOFTERWATER
SOLVING WATER PROBLEMS AROUND THE WORLD

softerwater.com.au

LEFT UNTREATED MINERALS IN WATER WILL CAUSE PROBLEMS IN YOUR CARAVAN & RV

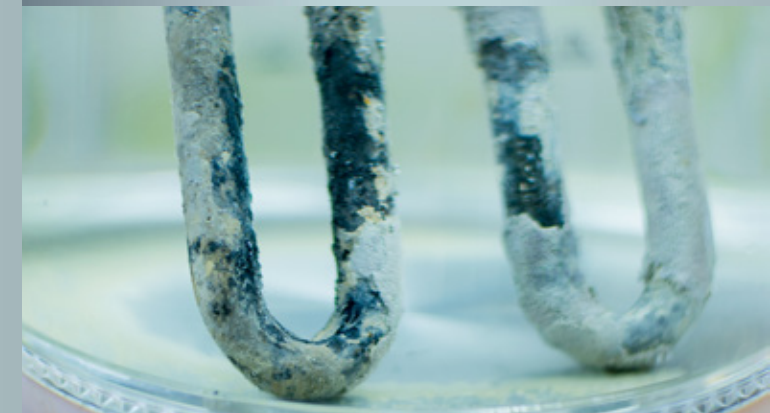


- ⚠ Scale deposits cause premature failure of heating elements, solenoids, sensors pumps, internal surfaces, spray bars and nozzles
- ⚠ Spotting on glass, cutlery and plates
- ⚠ Excess detergent & rinse aid use
- ⚠ Reduced efficiency
- ⚠ Unexpected breakdowns result in costly repairs or replacement

ARE YOU AT RISK?

Signs to look out for:

- ⚠ White spots where water has dried such as Shower screens, taps & faucets, cars, boats
- ⚠ Poor lather / low foam production from soaps and detergents
- ⚠ Dry hair and skin irritations
- ⚠ Decreased performance and increased running costs of appliances and equipment
- ⚠ Decreased performance and increased maintenance costs of evaporative air conditioners, hot water systems and appliances
- ⚠ Increased chemical usage in swimming pools and cooling towers
- ⚠ White 'chalky' appearance on surfaces
- ⚠ Premature failure of pumps, heating elements and related equipment
- ⚠ Calcification inside pipes, faucets, hot water systems, heating elements and chlorinator cells



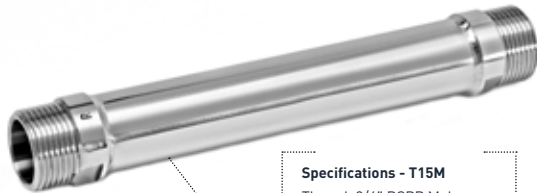
THE SOLUTION!

A Softerwater Conditioner



Specifications - T9M

Thread: 3/4" BSPP Male
Length: 117mm
Housing: 304SS
Flow Range: 5 - 15l/min

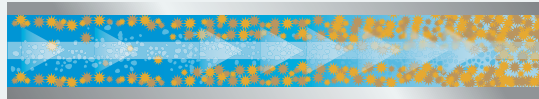


Specifications - T15M

Thread: 3/4" BSPP Male
Length: 157mm
Housing: 304SS
Flow Range: 12 - 25l/min

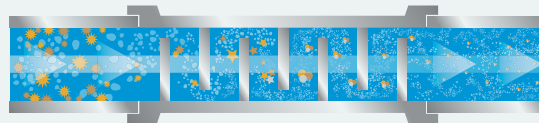
- ✓ Protects hot water systems, heating elements, pumps, pipes, solenoids and sensors against costly damage caused by scale-forming minerals in water
- ✓ Corrosion protection
- ✓ Softer water to shower in = reduced skin irritations and dry hair
- ✓ Better mix of water of water with shampoo, soaps and detergents = better lather formation
- ✓ Reduced spotting on shower screens, glass, cutlery and plates
- ✓ Water protection for appliances
- ✓ Simple installation

A SIMPLIFIED LOOK AT OUR ADVANCED TECHNOLOGY



STANDARD WATER SYSTEM

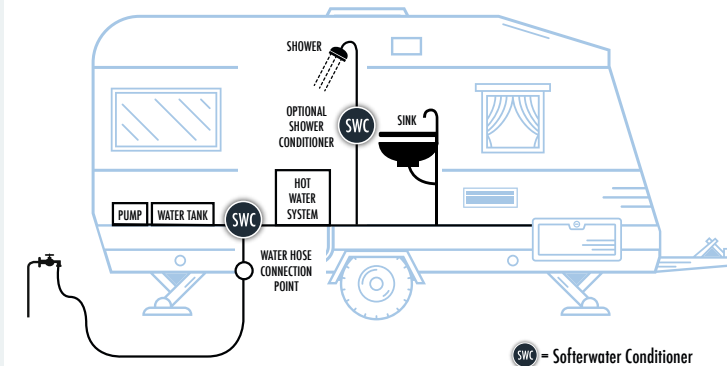
Scale-causing minerals have a high electrical charge, repel each other and 'stick' to pipes and equipment causing costly hard water problems.



WITH SOFTERWATER CONDITIONER

The softerwater alloy produces a turbulent mineral-attracting galvanic action reducing the electrical charge of minerals.

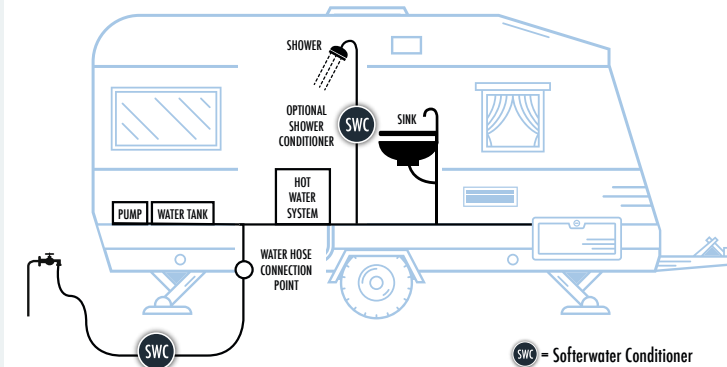
Non-sticking nano sized colloids are formed and flow through the system in suspension significantly reducing hard water problems.



SWC = Softerwater Conditioner

PERMANENT INSTALLATION

Install SWC after the intersection of the water connection point and main line from the pump, ensuring all water is conditioned.



SWC = Softerwater Conditioner

HOSE INSTALLATION

Install the Softerwater Conditioner in the water connection hose. Hose connectors not supplied.

Contact us

✉ info@softerwater.com.au
☎ + 61 417 745 066



3/12 Hampton Road, Burleigh Heads Queensland, Australia 4220
A.B.N. 38 117 159 583

SOFTERWATER
SOLVING WATER PROBLEMS AROUND THE WORLD

softerwater.com.au

SOFTERWATER
SOLVING WATER PROBLEMS AROUND THE WORLD

softerwater.com.au